

INTERIOR SPACE

室内空间设计丛书 II

IS

MEDICAL SPACE

医疗空间

室内空间设计丛书 II

■ INTERIOR SPACE

is 医疗空间

M E D I C A L S P A C E

 北京科学技术出版社

Copyright©ARCHIWORLD CO.,Ltd

Publishing: ARCHIWORLD CO.,Ltd

Publisher: Jeong, Kwang-young

图书在版编目(CIP)数据

医疗空间/韩国建筑世界出版社著. —北京:北京科学技术出版社, 2008.5
(室内空间设计丛书Ⅱ)

ISBN 978-7-5304-3604-2

I.医… II.韩… III.医院-室内设计-图集 IV.TU246.1-64

中国版本图书馆CIP数据核字(2008)第044772号

著作权合同登记号 图字:01-2008-1015

医疗空间——室内空间设计丛书Ⅱ

作 者: 韩国建筑世界出版社

责任编辑: 孙 真 李 媛

责任印制: 张 良

封面设计: 樊润琴

内文制作: 魏月玲

出 版 人: 张敬德

出版发行: 北京科学技术出版社

社 址: 北京西直门南大街16号

邮政编码: 100035

电话传真: 0086-10-66161951(总编室)

0086-10-66113227 0086-10-66161952(发行部)

电子信箱: bjkjpress@163.com

网 址: www.bkjpress.com

经 销: 新华书店

印 刷: 北京地大彩印厂

开 本: 780mm×1055mm 1/16

印 张: 9.75

版 次: 2008年5月第1版

印 次: 2008年5月第1次印刷

ISBN 978-7-5304-3604-2/T·578

定 价: 440.00元(全套五本)



京科版图书, 版权所有, 侵权必究。

京科版图书, 印装差错, 负责退换。

UMNAGUMO
Aesthetic Surgery

2

Beautiful e-Dental
Clinic

12

Lamplant Dental
Clinic

20

Hana skin care
clinic

32

yonsei W
dental clinic

44

MIR Dental
Hospital

52

Cho,Chul-Hyun
Aesthetic Surgery

66

JAWGAK Plastic
Surgery Clinic

74

Eunpyeong Yonsei
Hospital

82

La Noche
Women's Clinic

90

LEE'S DENTAL
CLINIC

100

Dentree Dental
Clinic

110

THE PLASTIC
SURGERY

120

White Dental Clinic

132

CLINIC THE H

144

UMNAGUMO

Aesthetic Surgery

UMNAGUMO美容诊所

UMNAGUMO是一家以胸部整形为主营业务的美容诊所。在经过仔细的考量后，设计师决定将设计主题着眼于内在含义。设计理念是首先使就诊者从思想上信任诊所能作出令人满意的美体效果。然后采用能够传达出自信心的颜色和主题并搭配以其他的颜色和一些小的细节来烘托效果。

入口处采用蒙德里安（Piet Mondrian）风格的玻璃墙体，这是一种常见的布局。玻璃墙被区分成几格，给人以精巧细致的美感，仿佛在告诉患者，将要进行的整形手术将是极具价值的。UMNAGUMO美容诊所的墙面上有半球体的装饰造型，这些随意分布的球体造型寓意经过胸部整形手术后美丽的曲线。

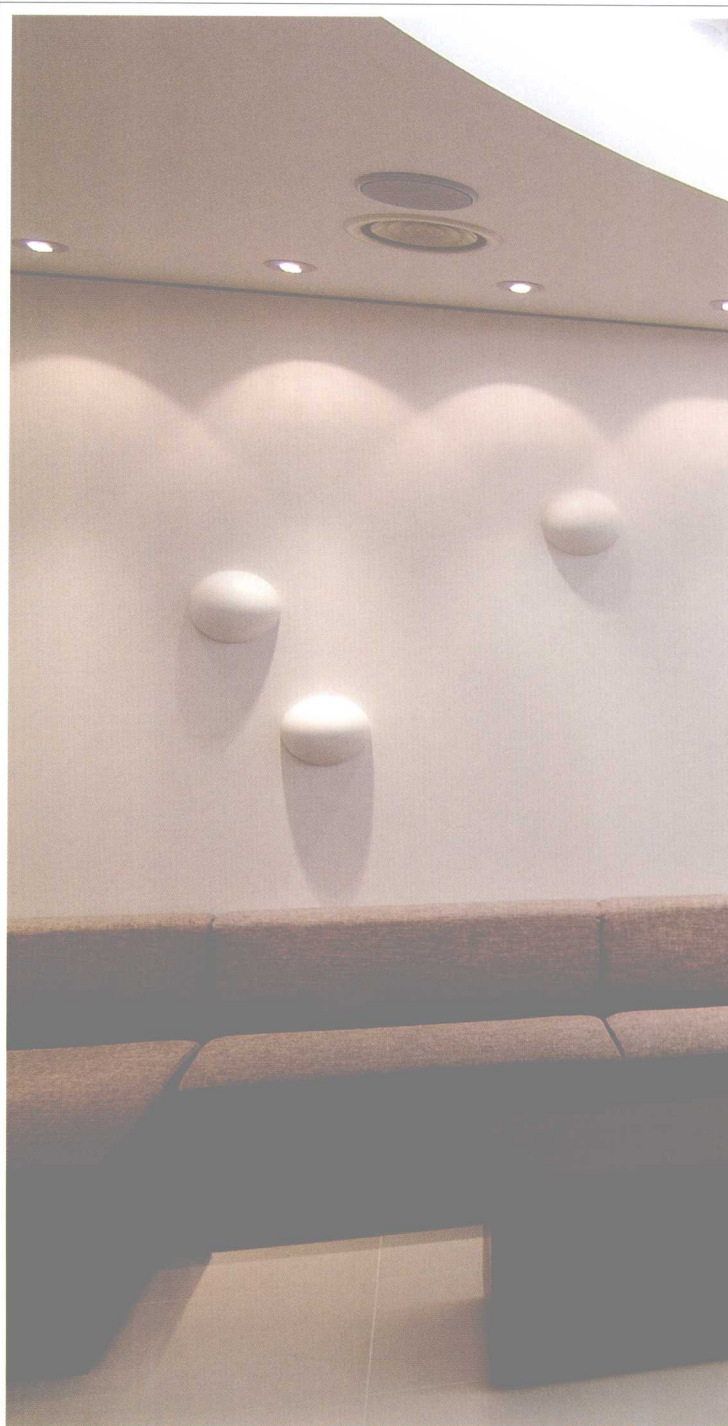
在设计中对于这种特殊的空间布局首先要考虑的是光线。由于从电梯间没有任何光线射入走廊，因此便在走廊处引入一套照明系统。因为层高比较低，所以会让空间看起来比较小，设计师很好地解决了这个问题，方法就是地面和墙面都采用纵向因子布置的方法。天花板做了椭圆形状的凹面，并装饰有条形的自然风景的图画。在入口到治疗室周边，镜子都用垂直的线分隔，这种处理方法可以延伸视觉空间感。UMNAGUMO美容诊所独具匠心的各项设计都是为了让自己在同行业的竞争者中脱颖而出。

UMNAGUMO Aesthetic Surgery specializes in chest plastic surgery. After a hard thinking, the designer decided to emphasize the intrinsic meaning of the project. The design begins from the patient's mentality and trust in the satisfying result. The color and motif of the basic composition, which is the expression of self-confidence, are connected to another color and detail.

A glass wall inside the entrance is evocative of the familiar composition of Piet Mondrian. The divided surface shows a delicate and sensuous design, delivering the message to the patients of how much the surgery values the beauty. UMNAGUMO Aesthetic Surgery has hemisphere forms on its walls. The randomly positioned hemispheres present the image of the bust plastic surgery.

The first task that should precede the spatial composition

was the lighting; there was no light of any sort in the hallway that starts from the elevator, and a lighting system was introduced. Having a low ceiling height, the space could have been looked small. The designer solved the problem through the vertical elements of the floors and walls. The ceiling has oval-shaped pits applied by the graphic sheet with natural image printing. Beside the entrance to the treatment room, the mirror, which is divided in many vertical lines, increase the expectation toward the space. UMNAGUMO Aesthetic Surgery aims to differentiate itself from the other neighborhood competitors.



设计: design INFUR Hong, Seung pyo

www.infur.com

执行设计: design INFUR

施工: design INFUR

建筑面积: 214米²

装饰材料: 地面/ 瓷砖, 木地板, 锦砖

墙面/ 大理石, 彩色玻璃, 墙面漆,

壁纸, 乌镜, 图案片

天花板/ 墙面漆, V.P, 墙纸

Design design INFUR Hong, Seung pyo

www.infur.com

Execution Design design INFUR

Construction design INFUR

Built Area 214m²

Finish Floor / Tile, Wood Flooring, Porcelain Tile

Wall / Marble, Color Glass, Lacquer, Wallpaper,

Black Mirror, Graphic Sheet

Ceiling / Lacquer, V. P, Ceiling Paper





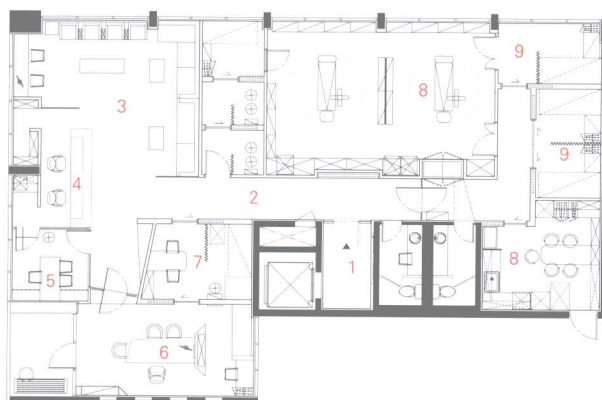
蒙德里安风格的玻璃墙体
Evocative of the familiar composition of Piet Mondrian





分隔面表现出精巧细致的美感

The divided surface shows a delicate and sensuous design



1. 入口
2. 走廊
3. 等候大厅
4. 登记处
5. 咨询室
6. 治疗室
7. 超声波室
8. 手术室
9. 病房

1. Entrance
2. Corridor
3. Waiting area
4. Reception
5. Consulting room
6. Treatment room
7. Supersonic room
8. Operation room
9. Ward

平面图
Floor plan





诊所中央墙体上采用半球形状的装饰
Clinic Center has hemisphere forms on its walls



用很多竖线分割的镜子延伸了空间感
The mirror, which is divided in many vertical lines, increase the expectation toward the space



植物枝叶的图案喷绘在椭圆形的吊顶上

The ceiling has oval-shaped pits applied by the graphic sheet with natural image printing



嫁接枝条配以粉红色的柔和光线增强了空间感
Graft together light image of pink ton to space

Beautiful e-Dental Clinic

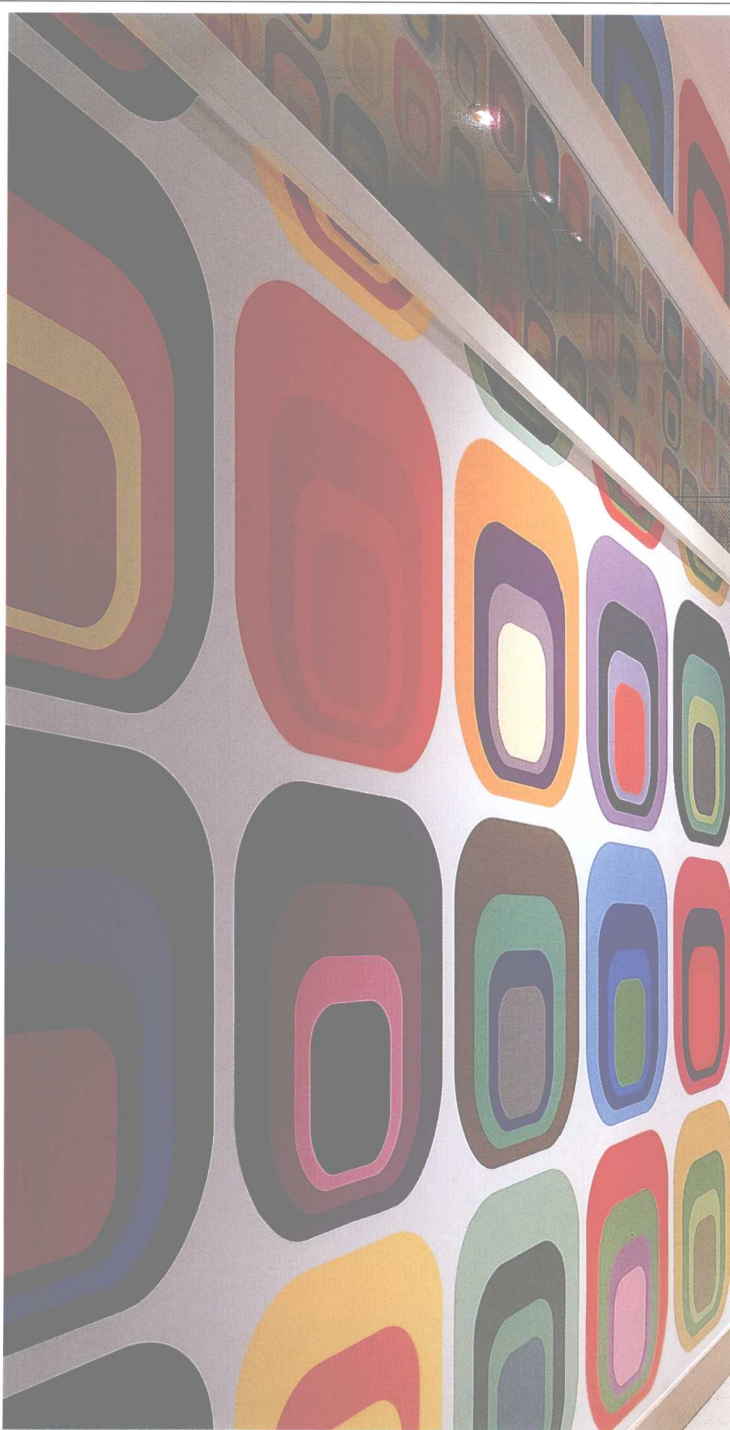
华美的e-牙科诊所

提到牙科诊所，往往会想到治疗仪器低沉的嗡嗡声和各种各样的医疗器械，使人不寒而栗，更别说接下来的治疗过程以及随之而来的疼痛了。这些都是让患者再也不想靠近牙科诊所的原因。

此设计强调患者在思想和情感方面的接收和认同，同时注重医疗人员在使用上的便捷性和功能性。在大厅，工作人员和患者的通道左右分开，在咨询处汇聚到一起。而且长长的走廊配有等候处和洗手台，使整个长廊不那么单调。采用给人以镇静、平和感的颜色给大厅增添了奢华的气氛。以给人视觉冲击的原色彩绘的牙齿图案装饰的墙面和治疗间的隔墙，使这个牙科诊所别具一格。椅子的颜色统一并使用原色以减少对患者注意力的分散。

The low humming sound of the equipments and the sight of the various medical tools give you a shiver. The treatment and the following pain are far from making you want to visit the dental clinic again. Hence the design concept of Beautiful e-Dental Clinic: 'an inviting dental clinic'.

The design emphasizes the mental and emotional aspect for the patients as well as the convenience and functionality for the medical staff. Inside the lobby, the traffic patterns of the staff and patient are divided into left and right, centering on the information desk. And the long corridor has small-sized waiting room and powder room, lightens the possible monotony. The calm and balanced colors create a luxurious mood for the lobby, while the tooth painted in striking primary color decorates the wall and partition of the treatment, breaking away from the standardized image of a dental clinic. The chairs have been unified in their color to offset the distraction caused by the use of primary colors.



设计: UE CORPORATION

www.uedesign.co.kr

施工: UE CORPORATION

建筑面积: 544米²

装饰材料: 地面/抛光瓷砖, 木地板, 装饰瓷砖

墙面/大理石, 抛光瓷砖, 墙面漆, 布料,

镜子, 玻璃, 胶合板, 墙纸

天花板/超细涂料, 墙面漆, 墙纸

Design UE CORPORATION

www.uedesign.co.kr

Construction UE CORPORATION

Built Area 544m²

Finish Floor / Polishing Tile, Wood Flooring, Deco Tile

Wall / Marble, Polishing Tile, Lacquer, Fabric,

Mirror, Glass, Veneer, Wallpaper

Ceiling / Superfine Paint, Lacquer, Wallpaper





大厅选用给人以镇静、平和感的色彩带来奢华感觉
Lobby with calm and balanced colors of luxurious mood