

围棋死活大全

赵治勋著 白小川译

(上册)

蜀蓉棋艺出版社

PDG

围棋死活大全

上册

基本死活部分

日本九段 赵治勋 著

白小川 译

蜀蓉棋藝出版社

前 言

本书从基本型到应用型，对死活问题作了系统的收集，并以辞典的形式作了归纳小结。就阐述的形式而言，并不想考读者，使读者一道一道的往下解死活题。但精力集中于阅读是必要的，内容确实很重要。你翻开此书，可以看见尽是有趣的形。虽然思考较麻烦，但马上可以看见正解。我希望这本书得到应有的利用，即使是放在枕头边上入睡前翻两页也罢。久而久之，大家就会对死活问题的思考方法自然有所理解，这就达到了本书的目的。

无论作什么，都应抓住基本的东西。例如，就本书开头出现的直三为对象，对死活问题反复研究，弄清一只眼和两只眼的区别，就很重要。通常，对直三和曲三的死活问题有了了解，那么和以前一无所知的时候相比，可以说已有了极大进步。轻视基本的东西，理论是无法有效利用的。

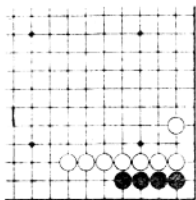
赵治勋

目 录

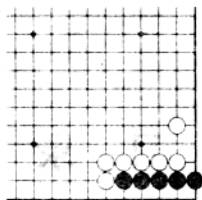
第1部 角的死活	27
1. 二线上的型	29
2. 板六型	61
3. 板八型	107
4. 梳形板六型	153
5. 曲尺型	199
第2部 边的死活	239
1. 二线上的型	241
2. 三线上的型	271
3. 四线上的型	303
第3部 应用死活	327
1. 星和三三	329
2. 破空腾挪法种种	353

第1部
角的死活

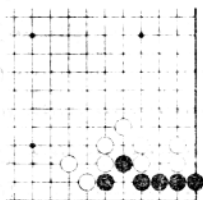
一二线上的型



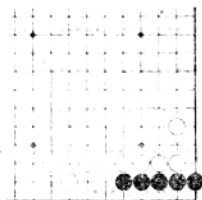
(31)



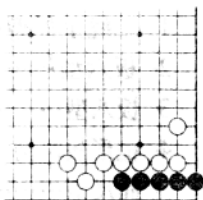
(30)



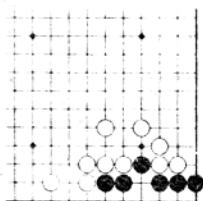
(34)



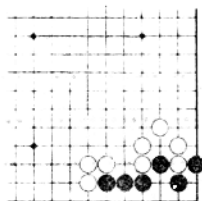
(33)



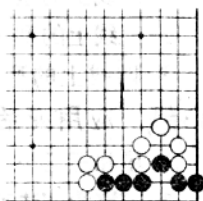
(32)



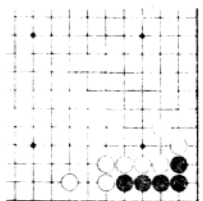
(38)



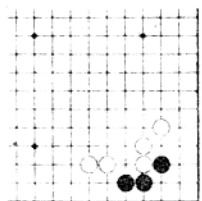
(37)



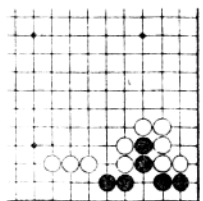
(36)



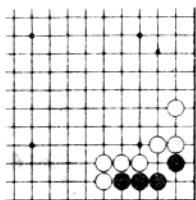
(42)



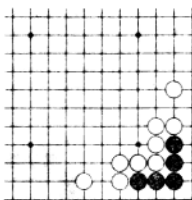
(41)



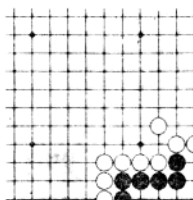
(40)



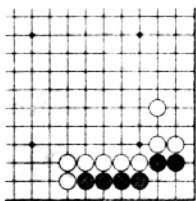
(48)



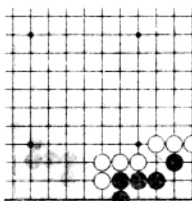
(46)



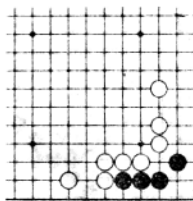
(44)



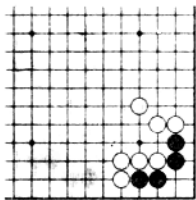
(54)



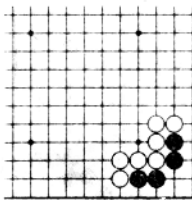
(52)



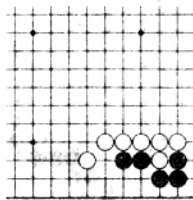
(50)



(57)



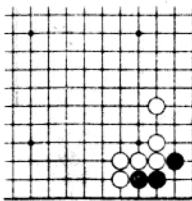
(56)



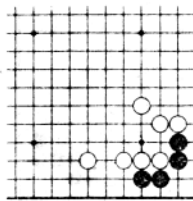
(55)

2

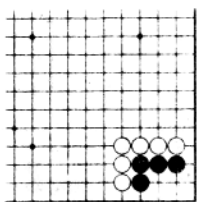
板六型



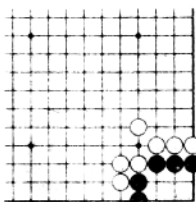
(60)



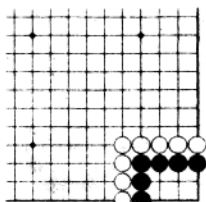
(58)



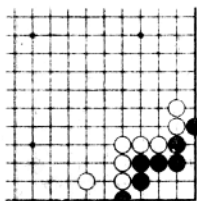
(66)



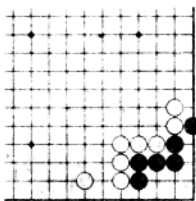
(64)



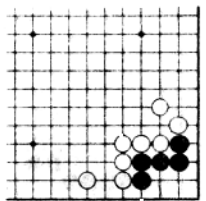
(62)



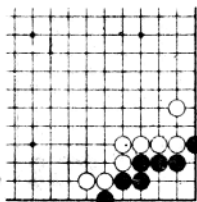
(72)



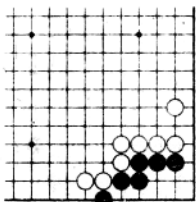
(70)



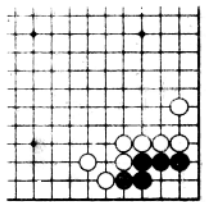
(68)



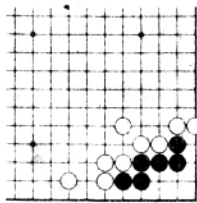
(77)



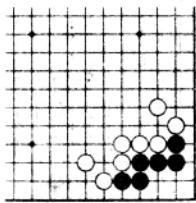
(76)



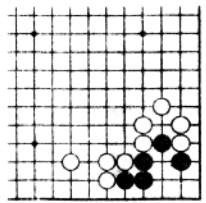
(74)



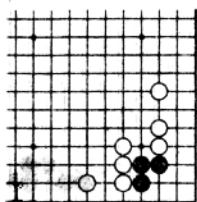
(82)



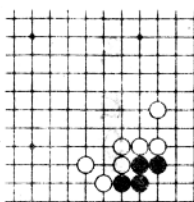
(80)



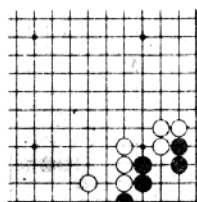
(78)



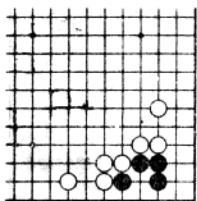
(88)



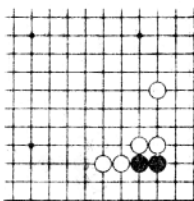
(86)



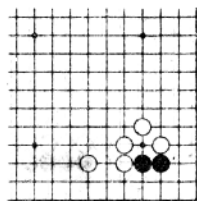
(84)



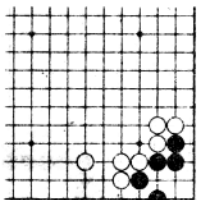
(94)



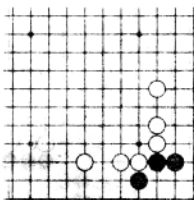
(92)



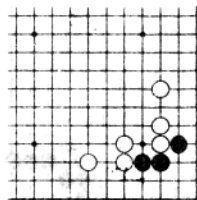
(90)



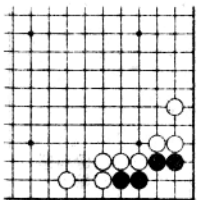
(100)



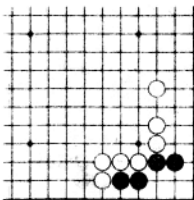
(98)



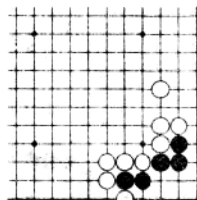
(96)



(104)



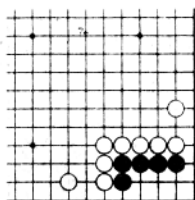
(102)



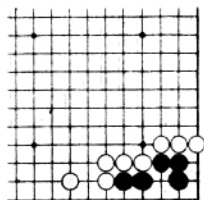
(101)

3

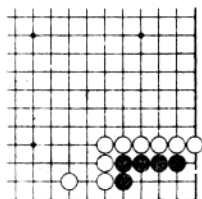
板八型



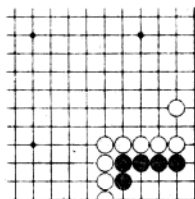
(108)



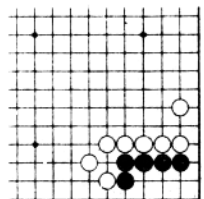
(106)



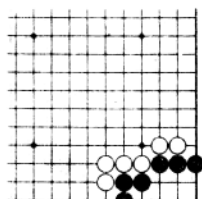
(114)



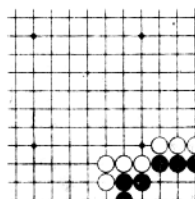
(112)



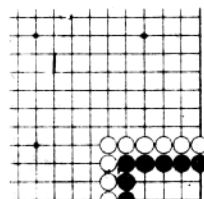
(110)



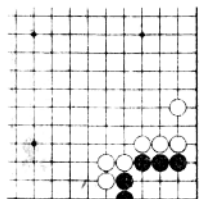
(119)



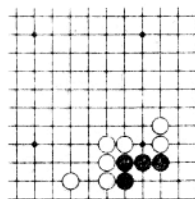
(118)



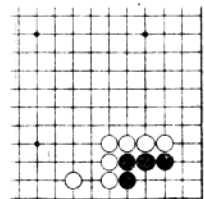
(116)



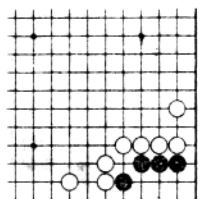
(122)



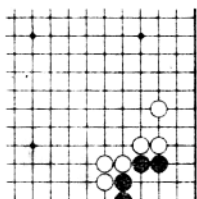
(121)



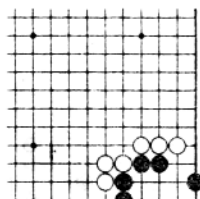
(120)



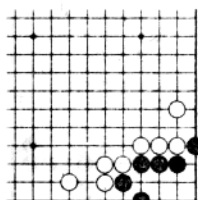
(126)



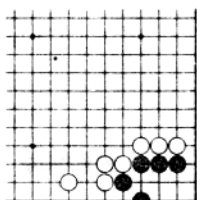
(125)



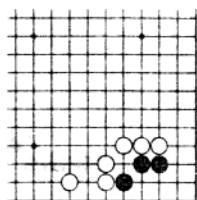
(124)



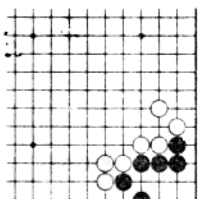
(132)



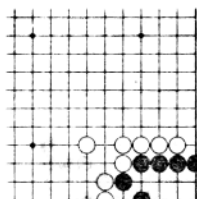
(130)



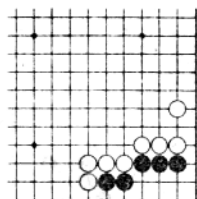
(128)



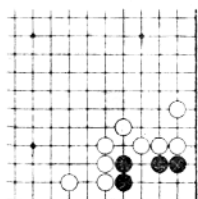
(135)



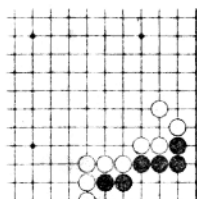
(134)



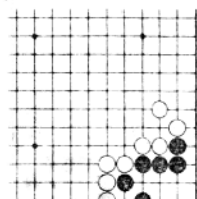
(133)



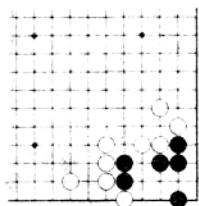
(139)



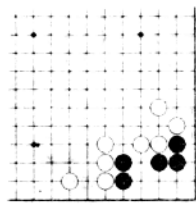
(138)



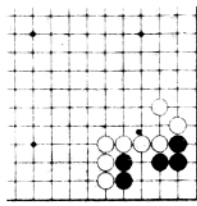
(136)



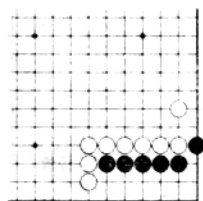
(144)



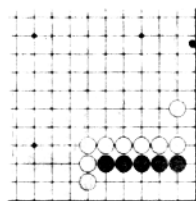
(142)



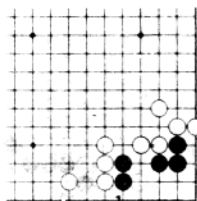
(140)



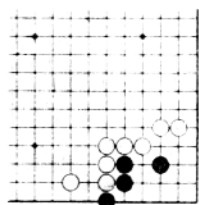
(148)



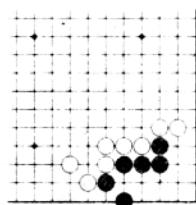
(146)



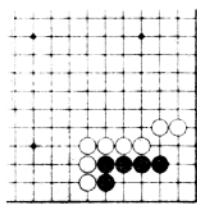
(145)



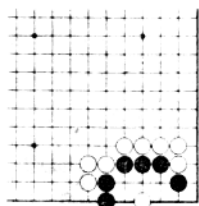
(152)

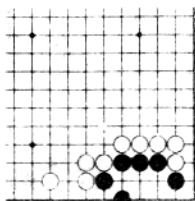


(150)

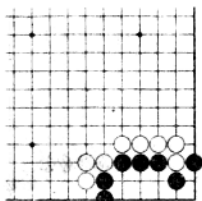


(149)

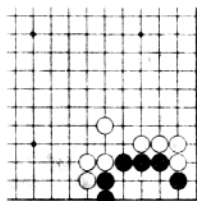




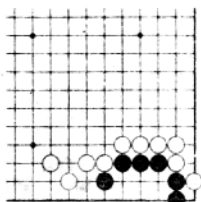
(159)



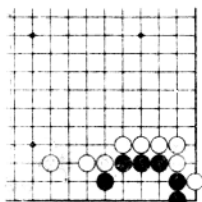
(158)



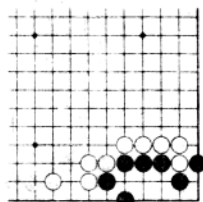
(157)



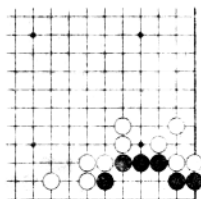
(164)



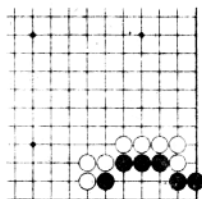
(162)



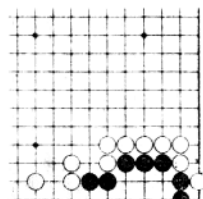
(160)



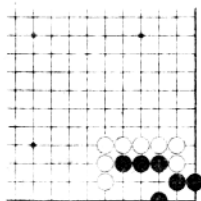
(168)



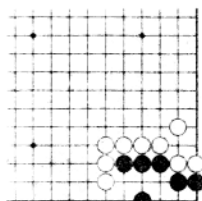
(166)



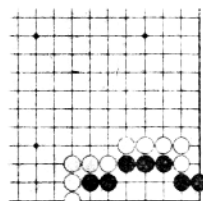
(165)



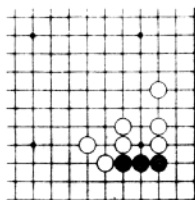
(173)



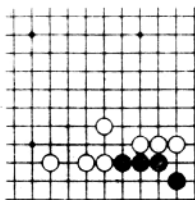
(172)



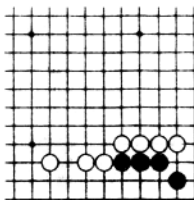
(170)



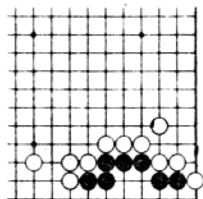
(192)



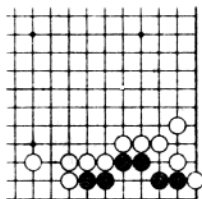
(191)



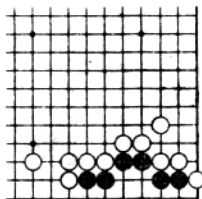
(190)



(196)



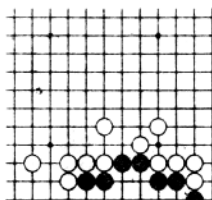
(195)



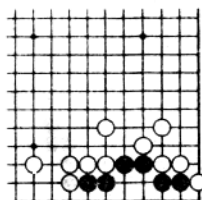
(194)

5

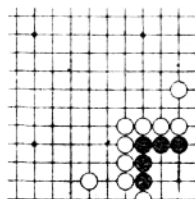
曲尺型



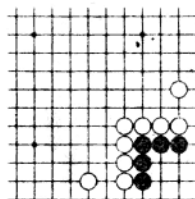
(198)



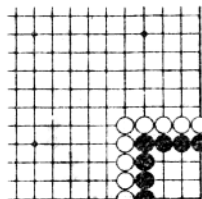
(197)



(204)



(201)



(200)

