

# *Classics of*

# *Landscape V*

景观设计经典 V  
下 住区景观

香港科讯国际出版有限公司 编



大连理工大学出版社





## 唐艺资讯集团

### 下属机构

#### 地产研究机构：乐居房地产策划有限公司

依托《时代楼盘》，凭借资深专家、顾问和策划编辑的共同努力，为整个地产产业提供了一系列富有价值的研究成果：如《10X100国际风格楼盘》、栖居系列—《栖居—万科的房子》以及即将出版的系列之二《栖居—金地的创造》等，对整个地产行业进行了系统的整理和研究贡献，并成了这个行业不可或缺的“史料”，影响深远！

#### 编辑出版机构：香港科讯国际出版有限公司

是上面地产研究机构的后续环节——将上面的研究成果通过精心的编辑和印刷转化成实实在在的产品。

#### 发行机构：广州市唐艺文化传播有限公司

将我们最终的产品通过覆盖全国 30 多个省市的销售渠道和网络第一时间发往各地，确保双赢。

#### 网络机构：金盘网

### 2007 年至今策划编辑的畅销书籍



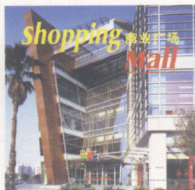
#### 《时代楼盘》

- 乐居房地产策划有限公司 策划
- 香港科讯国际出版有限公司 编
- 月刊
- 定价：35元 / 册



#### 《栖居·万科的房子》

- 乐居房地产策划有限公司 策划
- 香港科讯国际出版有限公司 编
- 2007 年 7 月第一版
- 定价：298元 / 册



#### 《商业广场》

- 乐居房地产策划有限公司 策划
- 香港科讯国际出版有限公司 编
- 2007 年 4 月第一版
- 定价：248元 / 册



#### 《第二届iF国际设计大奖赛》

- 香港科讯国际出版有限公司 策划
- 香港科讯国际出版有限公司 编
- 2008 年 4 月第一版
- 定价：330元 / 册



#### 《中式住宅》

- 乐居房地产策划有限公司 策划
- 香港科讯国际出版有限公司 编
- 2007 年 5 月第一版
- 定价：238元 / 册



#### 《时代空间》系列第一册

- 逢双月出版
- 香港科讯国际出版有限公司 策划
- 香港科讯国际出版有限公司 编
- 2008 年 6 月第一版
- 定价：98元 / 册



# 2008 经典归来—— 商业广场 II

即将隆重面市

新书推荐

吐故纳新，厚积薄发，汇聚当下顶级名家名作，续呈商业广场的精品盛宴。

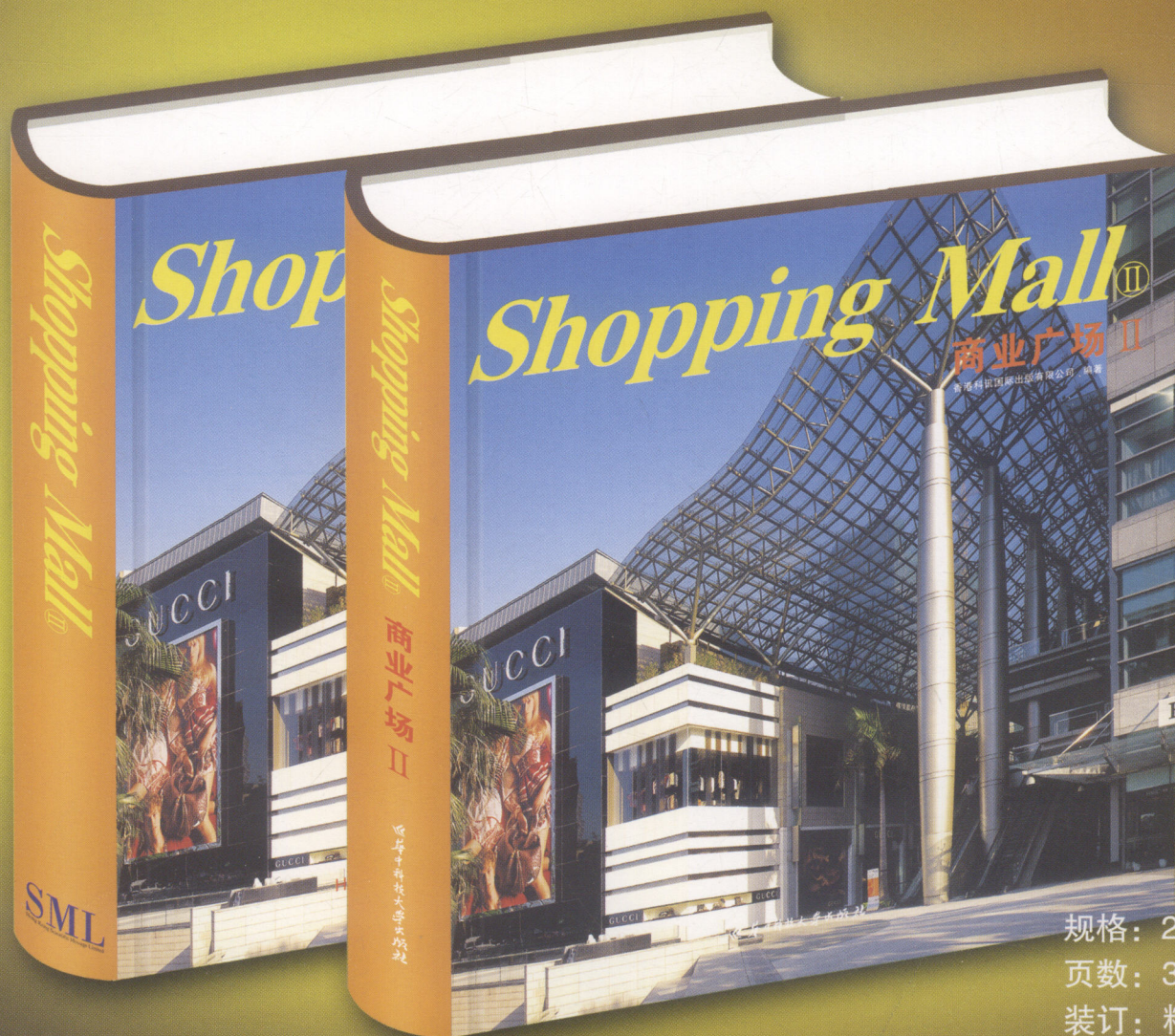
香港科讯携手商业地产、建筑界人士，共同分享见证：

**大型综合商业广场**——芬兰KAMPPI、韩国LOTTE TOWN……如何在城市中心成就其霸主地位；

**主题式商业广场**——香港圆方、瑞士Schönbeh……如何绽放千姿百态，引领时尚风潮；

**区域型商业广场**——深圳蛇口花园城、奥地利Q19……如何异军突起，占据半壁江山；

**商业街**——新加坡克拉克码头、杭州湖滨国际名品街……如何燃烧房地产市场，引无数英雄竞折腰……



规格：280 mm x 280 mm

页数：336 P

装订：精装

定价：298.00元



联系电话：020-38482422、33866368

传 真：020-38483425

[www.tang-e.com](http://www.tang-e.com)



# *Classics of* 景观设计经典 V 下 住区景观 *Landscape V*

香港科讯国际出版有限公司 编

大连理工大学出版社



图书在版编目(CIP)数据

景观设计经典. 5. 下册 / 香港科讯国际出版有限公司  
编. —大连: 大连理工大学出版社, 2008.10  
ISBN 978-7-5611-4380-3

I. 景… II. 香… III. 景观—园林设计—图集 IV.  
TU986.2-64

中国版本图书馆CIP数据核字(2008)第127533号

---

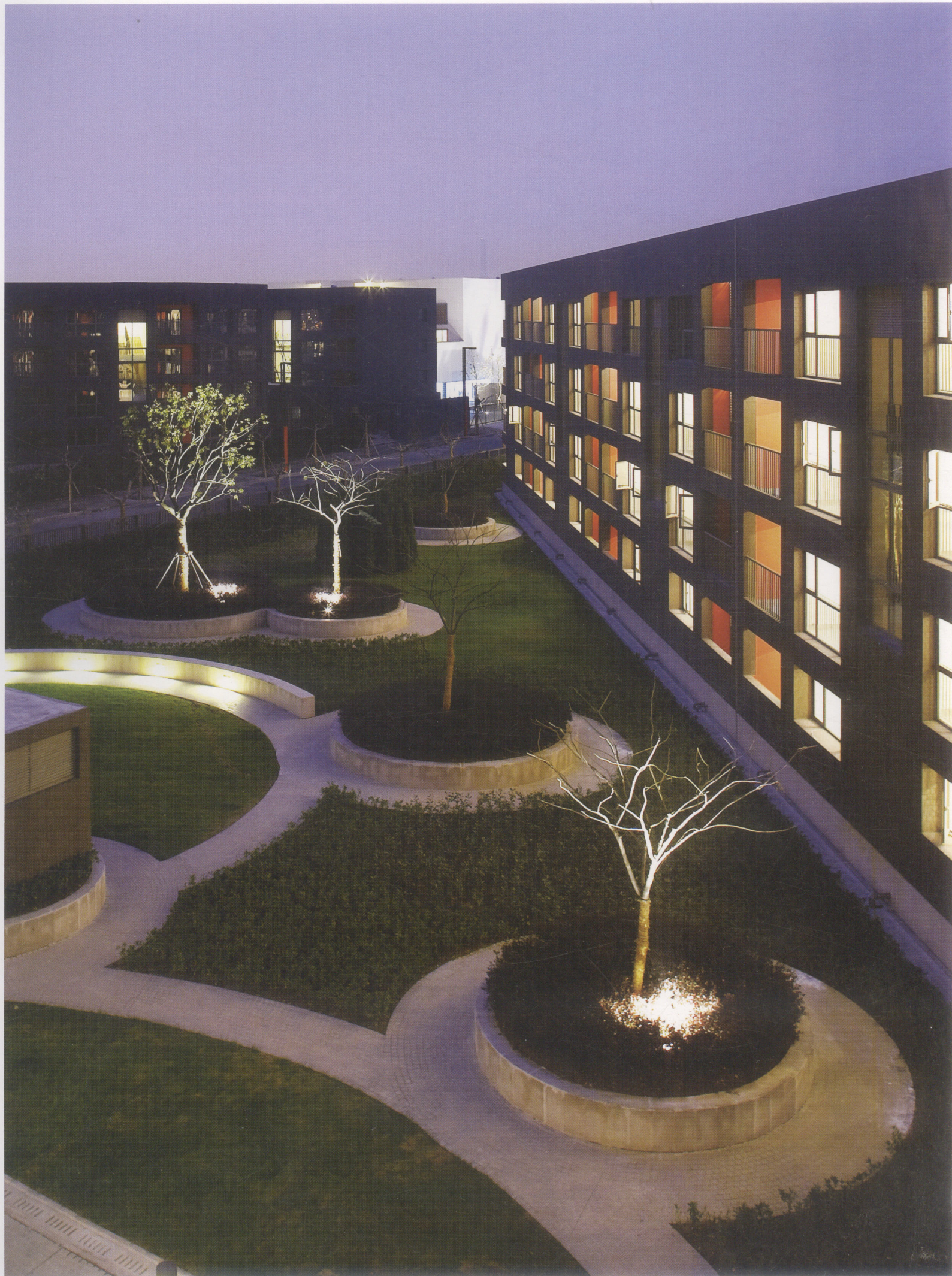
出版发行: 大连理工大学出版社  
(地址: 大连市软件园路80号 邮编: 116023)  
印 刷: 利丰雅高印刷(深圳)有限公司  
幅面尺寸: 230mm × 305mm  
印 张: 21.25  
插 页: 4  
出版时间: 2008年10月第1版  
印刷时间: 2008年10月第1次印刷  
责任编辑: 初 蕾  
责任校对: 陈 哲 马 帅  
封面设计: 李仕泉

---

ISBN 978-7-5611-4380-3  
定 价: 680.00元(上、下册)

电 话: 0411-84708842  
传 真: 0411-84701466  
邮 购: 0411-84703636  
E-mail: dutp@dutp.cn  
URL: <http://www.dutp.cn>











" Stated simply, the aim of the planner is to create for mankind a better environment, a better way of life. One designs not places, or spaces, or things, one designs experiences. The places, spaces, and things take their forms from the planned experience."

一种体验。而场所、空间和事物的形式都可以从规划好的体验中获得。”

**- John Orsmbee Simonds**

—— 约翰·O·西蒙兹



## Landscape for low-rise residential area 低层住区景观



016~021

Low-rise residential area adapts low-density urban population, which usually exists in suburbs and small town. The low-rise residential area mentioned in this book is mainly villa. Compared with other types of residences, the greatest strength of villa is close to nature, so the landscape design is one of the important marks to decide if the villa is good or bad. Speaking of the villa landscape, it must have a scientific and reasonable overall planning of environment landscape and advocate humanized design at the same time to achieve good landscape effect through natural community allocation, such as EDO, which is the model of environment design. It has annotated the essence of villa landscape design well.

低层住宅与较低的城市人口密度相适应，多存在于城市郊区和小城镇，本书的低层住宅主要是指别墅。别墅较之其他类型住宅最大的优点是接近自然，因此景观设计是决定别墅优劣的重要标志之一。对别墅景观而言，要创建良好的绿化环境，必须有科学合理的环境景观总体规划，同时提倡人性化设计，以自然式的群落配置达到良好的景观效果，如 EDO，作为环境设计的典范，它很好地诠释了别墅景观设计的精髓。

### EDO in Australia 澳大利亚EDO住区

EDO is a residential development project of high quality and medium density and is located in Woolloomooloo, East Sydney. EDO is the model of environment design project.

EDO是一个高品质、中密度的住宅开发项目，位于悉尼东部的乌鲁木鲁，它是环境设计项目的典范。



022~027

### The Central Courtyard of the Jaques Avenue in Australia 澳大利亚雅克大道中心庭院

The central courtyard of the Jaques Avenue is situated on a raised podium. It is the primary landscape for the majority of apartments here. There is a three-story entrance in the building façade, providing a frame for the landscape of the central courtyard. The central courtyard has been designed as a communal green space, only to be viewed from far away instead of being entered.

雅克大道的中心庭院位于抬高的裙房上，它是该处大多数公寓楼间最主要的景观设置。在建筑的外立面，有个三层楼高的开口，它为中心庭院的景观提供了框景。中心庭院被设计成一个公用的绿地空间，人们只能远远地欣赏，而不能走进庭院。



028~039

### Berkson Residence, New York 纽约伯克森豪宅

This three-acre historic Westchester property, known as Seven Pines, has long enjoyed an impressive garden history. More recently the property had fallen into severe decline. Neglect of the gardens, disturbance from new construction and the owner's desire for new site uses made an entire redesign of the property necessary. The original house was to be transformed into a new 25,000 square feet Georgian estate home. HM White was engaged early in the home's construction process to craft a new vision for the property and establish a seamless connection between house and garden.

这是一座面积约三英亩的古老的切斯特宅院，被称为“七棵松”，它在庭院设计上体现出了久远的历史感，极富影响力。最近这处宅院已经严重衰落，对园林的忽略，新建成的建筑对其造成的破坏和用户要求改造的呼声使这个宅院的重新设计势在必行。原有的房子被改造成一个将近 25 000 平方英尺的乔治亚风格的宅院。设计师 HM White 在宅院的改造过程中就预计要赋予其一个全新的形象，并打算在其房子和花园之间建立一种紧密的联系。



040~049

### Topview Lakeland in Wuxi 无锡湖玺庄园

Topview Lakeland is located at the bank of Wuli Lake and at the foot of Bijia Mountain, which is the most upscale villa area in Wuxi. The greening ratio is as high as 65%, costing more than 9 million Yuan. The green planting of manor returns to nature, presenting the North American customs.

湖玺庄园坐落于五里湖畔，笔架山麓，是无锡最高档的别墅区，绿化率达 65%，绿化造价 900 多万。庄园绿化种植返璞归真、亲近自然，呈现出一派北美风情。





050~061

### Gemdale Bruce County in Shanghai 上海金地布鲁斯郡

Gemdale Bruce County is located in Jiading District, Shanghai, backing to the humanity essence of Nanxiang old town, near to the Qiyuan of Ming dynasty and the Eastern Paris Golf Court. The phase II is made up of C, F and G districts. The whole project is planned to build the biggest Townhouse for middle-class residence community in the western Shanghai, embodying the ideal life of the middle-class citizens by a native river, an island, and five green spaces.

金地布鲁斯郡位于上海市嘉定区，背靠南翔古镇千年的人文精髓，明代琦园和东方巴黎高尔夫球场近在咫尺。二期工程由 C、F、G 区组成，整个项目被建设成西上海最大的 Townhouse 中产人居社区，以一条原生河、一座岛、五重绿色空间深度演绎城市中坚的生活理想。



062~071

### Beijing Bay 北京湾

Beijing Bay invites the top landscape design company EDSA as well as China Research Center of Landscape Architectural Design and Planning to design and build the landscape. The first phase of east area is 333 300m<sup>2</sup>, which embraces the mountain to build the garden, constructs the resort along the slope, encircles the trees to set scenery and draws the water from the river.

北京湾园林设计力邀业界顶级园林设计公司 EDSA 与中国风景园林规划设计研究中心联袂倾力构筑。东区一期 333 300 平方米，揽山造园，依坡建墅，围树置景，引水开河。



072~079

### Park Town in Shanghai 上海复地·北桥城

Landscape design of Park Town is worked out rooting from the architectural style of the item itself. The design company strives to make the landscape become the natural extension of architecture in order to form a harmonious and complete environment.

复地·北桥城的景观设计构思源自于项目自身的建筑风格，设计公司力图使景观成为建筑的自然延伸，从而形成和谐而完整的环境空间。



080~093

### DongLuYiJing in Chengdu 成都东麓驿境

Taking advantage of its primitive landforms around natural continuity and perfect mixture of architecture and nature, tradition and modernity, idyll and city. Modern gardening skills have been adopted in the design to organically consolidate urban civilization and rural idyll.

利用项目的原始地貌，围绕塑造建筑与自然、传统与现代、山居与都市的自然延续和完美融合，在项目设计中利用现代造园的手法，将都市文明与山居的质朴有机统一。



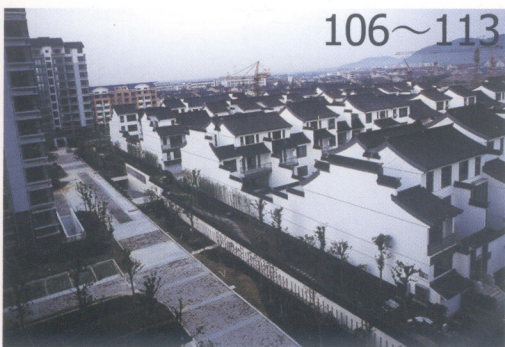
094~105

### Pujiang Boutique City in Shanghai 上海浦江一品漫城

The plan absorbs the essence of Italian ideal city theory and respects the reality of metropolitan location, taking "creating free city with boutique element" as the design idea. The layout adopts the principle of "small scale, multi residence group" to form abundant space variation and make up the texture of "free city" with curved road. The "free city functional belt" along the water system combined with the scatted space, novel leisure construction and natural water green landscape to create the charming and romantic street. The plan slows down people's pace by the design of space landscape, expressing the "free city" in function.

规划吸取了意大利理想城市的理论精华，并尊重处于大都市的区位现实，以“创造融入Boutique元素的随性的漫城”为设计理念。布局上以“小尺度、多组团”的原则形成丰富的空间变化，加上折线型的道路，构成了“漫城”的肌理；沿水系布置的“漫城功能带”结合高低错落的空间、新颖别致的休闲建筑以及自然柔美的水绿景观，创造出富有魅力和浪漫气息的街道，使人们驻足。规划通过空间景观的设计放慢了人们的行进速度，在功能上演绎了“随性的漫城”。





106~113

### Jiangnan Fang in Wuxi 无锡江南坊

The central courtyard constituted by the waterscape and the rockery is the core landscape of whole garden. The in-depth peninsula, stone bridge, and stepping stones on water surface separate the waterscapes into several territorial waters of different areas, which forms many view points and landscape points as well as making up an abundant landscape system.

由水景和假山构成的中心庭院是整个园林的核心景观。深入水中的半岛、石桥和汀步等将水景分隔成若干个大小不等的水域，形成多个观景处和景观点，构成丰富的景观系统。



114~127

### Eastern Provence in Beijing 北京东方普罗旺斯

The planning and design of Eastern Provence fully embody EDSA design concept which is "respect nature, human-oriented". It means to protect and make full use of the present natural terrain and landform, rich vegetation and water system; to form landscape ecological security pattern; to research on the life experience and activity, to advocate a healthy and harmonious way of life, and to create a high quality living environment.

东方普罗旺斯在规划设计上充分体现了 EDSA “尊重自然、以人为本”的设计理念：保护和充分利用现状自然地形地貌、丰富的植被和水系，形成景观生态安全格局；围绕人的生活体验和活动规律来探讨设计，倡导健康与和谐的生活方式，营造高品位的居住环境。



128~139

### Tianhu Fengjing in Guangzhou 广州天湖峰境

Tianhu Fengjing is another excellent product of Guangzhou Hejing Taifu Group, following the Zhujiang New City Central Mansion—Yufeng. This project is defined as the most valuable top international landscape villa community in Guangzhou, trying to be the No.1 landscape villa in south China.

天湖峰境，是广州合景泰富集团继珠江新城中央豪宅——誉峰之后的又一巨献，项目定位为广州最具价值的顶级国际山水别墅社区，力创南中国山水第一墅！

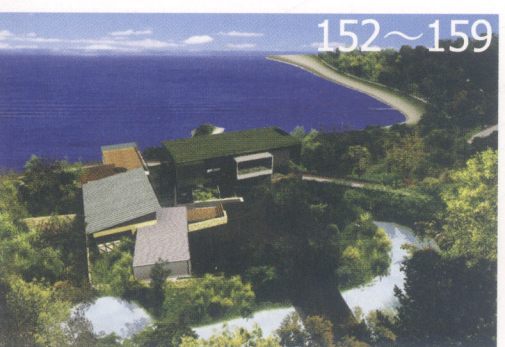


140~151

### Freely world in Wuhan 武汉“F、天下”

The development of "Freely World" is around the theme of "mountain, water, forest, and island". There are two mountains (Pingding Mountain, Gangguan Mountain), one lake (Back Lake), and two roads (Panlong No.1 road, Panlong No.2 road) in the garden. The old trees in the community form a large-scale primeval forest. The water face of different width circles the verdant sloping field. The villas are scattered in this beautiful scene. All of these create a new personalized life pattern.

“F、天下”整个项目围绕“山、水、林、岛”主题展开，园内有二山（平顶山、铜管山），一湖（后湖），双龙路（盘龙二路、盘龙三路）。整个社区内的成龄树木形成颇具规模的原始森林，宽窄不一的水面环绕着苍翠葱郁的坡地，别墅依山傍水散落其间，营造出个性化的新生活模式。



152~159

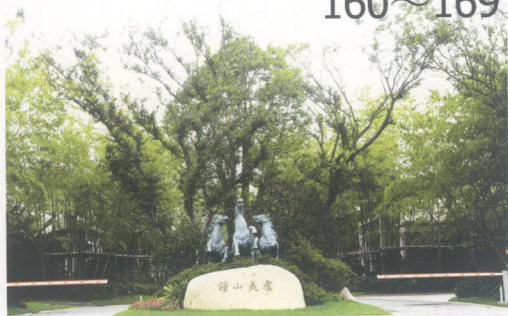
### Shenzhen Tianqin Bay (Phase III) 深圳天琴湾(三期)

Tianqin Bay (phase III) is surrounded by the sea on three sides. An existing road separates this area from the surrounding waters, and the north part is the highway. The natural landscape and natural resources are the greatest advantages of the project. It takes the principle of not destructing the original mountains and vegetation, coordinating with the unique planning and architectural design, making use of the elevation of the mountains, the curved bank and the natural environment to produce top-grade villas standing in the green forest, integrating ecological environment with construction group.

天琴湾项目三期别墅区三面环海，一条现有的道路将该地与四周水域隔开，北边为高速公路。自然景观和天然资源是本项目最大的优势，以不破坏山地原有特征和植被的原则，配合独具特色的规划及建筑设计，利用山势高低错落，利用水岸的婉转曲折，利用大自然的环境，营造一种映在绿丛中的临海高档别墅，令生态环境与建筑群融为一体。



160~169



## Wonderful World Villa in Nanjing 南京钟山美庐

The noble villa community of "Nanjing Wonderful World Villa" that is planned and designed by Elan (Asia) Planning and Design Office is the perfect combination of culture and region, tradition and modernity. Using advanced design methods, the designers integrate modern oriental habitants' wisdom into the construction style of "Min Guo" with local cultural characteristics, and express the regional feeling, humanity, and diversity of landscape in the design to fulfill the home dream of modern citizens.

由易兰(亚洲)规划设计事务所总体规划设计的高尚别墅社区南京“钟山美庐”景观项目,是一次文化与地域、传统与现代的完美融合。设计师们用先进的设计手法,将具地方文化特征的“民国”时期建筑风格,融入现代东方人居智慧,并在设计中充分体现景观的地域性、人文性和多元性的特点,实现了当代都市人的家居梦想。

170~179

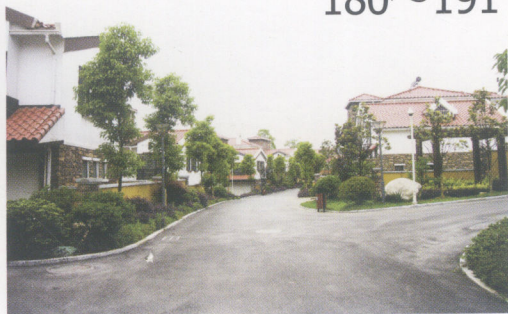


## Beijing Fragrant Hill No. 81 Yard 北京香山81号院

This case is planned by the famous landscape designer of Beijing Tsinghua Architectural Design Institute. It is designed as "a new poetic mountains villa", which is built upon the hillside, integrating with the terrain of Fragrant Hill.

本案由北京清华城市规划设计研究院著名景观设计师量身打造成“新诗意山居”,依山而建,与香江山势自成一體。

180~191



## Shangri-La Lushan Villa in Changsha 长沙香格里拉·麓山别墅

The garden landscape design of this plan takes "green" as the main key, "water" as the landscape soul, "tours" as the main axle. It fully utilizes the landscape skill of American's modern natural scenery, in the purpose of creating an elegant ecologic environment for the community with the function of residence, travel, leisure and sports.

本方案园林景观以“绿”为规划的基调,以“水”为景观的灵魂,以“游”为设计的主轴,充分运用美洲现代自然山水造园技巧,旨在为社区打造一个可居、可游、可休闲、可运动的优雅的生态园林环境。

## Landscape for multi-layer residential area 多层住区景观

The multi-layer residential area has good environment, few inhabitants, and large green areas. Its environment pursues mutual dependence between human and nature. It is relatively easier for designer to create good landscape environment. Some typical multi-layer residential areas displayed in this book could meet residents' requirement of high-quality life.

多层住区环境好,住户少,绿化面积大,其环境追求人与自然的相依相融,对景观设计者而言,营造良好的景观环境相对比较容易,本书所展示的几个典型多层住区,在舒适性和档次上都能满足住户对高尚生活品质的要求。

194~203



## GZ—Lake in Guangzhou 广州金地荔湖城

Every household owns a small courtyard. The first floor of each building has a yard, and the buildings circle a big courtyard. All small yards and the big courtyards are connected together, to create a quiet but lively landscape in a simple style.

每栋住宅都有一个小院落,住宅首层每户都有一个院子,由建筑围合成大院落,所有的大院落与小院落串联起来,以简约的风格营造了宁静而生机盎然的景观。





204~213

## Mount. Canyon in Shenzhen 深圳半山溪谷

The terrain of this project is different in elevation. The east is lower and the west is higher. Each group of the buildings should be designed in accordance with the surrounding terrain, physical features, orientation and traffic requirement. The community takes the cascade water surface as the center, and forms a main space sequence. The changeable free parts form the organic and dynamic living group space to pass through the main space sequence, thus forming a series of abundant space scenes.

本方案地形西高东低、高低错落，每组建筑组团均根据周边环境的地形、地势、朝向和交通需要，来确定其存在的形态。社区中心以叠落的水面为中心，至主入口形成一个主空间序列。高低变幻的自由局部，组成了一个个有机的、活跃的居住组团空间，穿插于主空间序列之中，形成了一系列变化丰富的空间景象。



214~221

## Gemdale Green World (Tianjin) 天津金地格林世界

The landscape structure takes the central park as the main vein. The green space infiltrates from the green river to four residential districts. The main axis links sales office, east entrance, shopping street and club from north to south. The landscape structure radiates from the center.

景观结构以贯穿南北的中央公园为主脉，绿化空间从绿河渗透到4个住宅分区内。主脉由北向南连接售楼处、东部入口、商业街和会所4个核心点，形成由中心向四周扩散的放射状景观构架。



## Landscape for small high-rise residential area 小高层住区景观

Bounteous space of small high-rise residential areas could form different styles of living environment with unique characteristics after being planned elaborately and organized reasonably by the architects. With the improvement of living standards, people's living patterns are changing imperceptibly, which requires designers to pay more attention to the psychological needs of people. Therefore, when they design a comfortable living place, they try to provide a place for merging human and nature, so that small high-rise residential area will be more charming and attractive. For example, the designers of JinduhuaFu Residential Area in Hangzhou dig and exert the local traditional culture to create a special community landscape.

小高层住宅区的宽裕空间，经过建筑师精心策划和合理组织，可形成特色鲜明、风格各异的居住环境。随着生活水平的提高，人们的居住模式也在潜移默化地发生改变，这就要求设计师更多地关注人的心理需求，在创造舒适居所的同时，提供人与自然相融合的场所，使小高层住区更富有魅力和吸引力。如杭州金都华府，设计者通过对其地方传统文化的挖掘和运用，缔造了独特的住区景观。



224~235

## JinduhuaFu Residential Area in Hangzhou 杭州金都华府

The design source of the landscape is the local traditional culture. In the process of the project, the designer is trying to discard the old narcissistic garden form and make use of the historical cultural advantages of Hangzhou.

当地的传统文化是景观设计的源泉。在项目的进行中，设计人力图摒弃传统园林中孤芳自赏、因循守旧的园林形式，扬长避短，对杭州古老的历史文明优势进行挖掘并加以利用。



236~245

## Zhaoqing Star Lake Bay (A District) 广东肇庆星湖湾 A 区

This design gives priority to the modern Chinese style. It adopts the garden technique of "back to nature", and gives prominence to the Chinese cultural atmosphere of community. It pursues the modern landscape design idea to let the garden landscape permeate into the overall plan of the community to form a greening landscape system and produce the natural landscape garden of "combination of human and ecology".

本设计以现代中式风格为主，采用回归自然的造园手法，突出居住区浓厚的中式文化氛围，追求现代景观设计理念，将园林景观渗入居住区的整体规划中，形成绿化景观系统，努力打造“人文与生态相契合”的自然园景。





## Cambridge City in Nanchang 南昌康城

Designers utilize the advantageous elements in planning and integrate the landform with other conditions surrounding the buildings to form different gardening techniques. It forms a landscape axis consisting of a series of landscapes such as main entrance, square, lakeshore and stream to let people naturally transmit from the prosperous business area to the natural and ecological garden. The five landscape spaces of earthfront, waterfront, greenfront, childrenfront and neighborfront do not only satisfy the physical requirements of people but also evoke the resonance in their mentality.

康城充分利用规划布局的有利因素，结合地形、地貌及建筑周边环境的各种条件，采用各种不同的组景手法，营造一条由主入口、广场、湖边及生态小溪形成的景观中轴线，让人可以从外部繁华的商务区域自然过渡到内部的生态园林环境。项目营造了亲地、亲水、亲绿、亲子、亲邻五种类型的景观空间，在满足人生理上的需求之余，唤起心理上的共鸣，增强归属意识。

## Landscape for high-rise residential area 高层住区景观

The emerging of high-rise building marks the new change of urban space and landscape composition, especially in big cities and mega-cities where high-rise buildings have gradually become the logo of urban landscape and the important node for urban structure, showing a unique high-level geographical landscape structural characteristics. The core value of the luxurious flats with high-rise landscape is the scarcity of its environment and the high rate of occupancy of natural landscape. It does not only aim to dominate the flourishing of the city, but also aims to control natural landscape, which requires new designs of landscape for high-rise residential area. How to please consumers with scarce resources and personalized products has become the important content of the landscape of high-rise residential area. The successful cases selected in this book express this principle more or less.

高层建筑的出现标志着城市空间和景观构成开始发生新的变化，尤其是在大城市与特大城市，高层建筑已逐渐成为城市景观的标识与城市结构的重要节点，呈现出特有的高层地域景观与结构特征。高层景观豪宅的核心价值是环境的稀缺性和对自然景观的高占有率，既要主宰都市繁华，更要主宰自然景观，这对高层住区的景观设计提出了新的要求。如何以稀缺资源和个性化产品取悦消费者，成为营造高层住区景观的重要内容。本书所选的成功案例都或多或少地体现了这一原则。



## The New Platform in Shenzhen 深圳前海公馆

The New Platform pays attention to the experience of residents. The creation inspiration stems from the reexamining and rethinking of the nature. The design has borrowed the "profound and lofty" principle from the traditional Chinese paintings. It tries to reach the purpose of maximized green space by creating slopes and designing landscape sight.

前海公馆关注居住者的体验，其园林的创作灵感源于对自然的重新审视和思考。设计借鉴了传统中国画中“平远、深远、高远”的画理，通过塑造坡地和设计景观视线以达到绿地最大化的目的。



## Zhujiang Royal Scenery Bay in Guangzhou 广州珠江御景湾

The top planner of the world makes the overall planning of Zhujiang Royal Scenery Bay. It advocates the natural harmony of human and environment. The design takes "water" as its theme, integrates the noble Italian spice with humanity, creates a half-circled arch residential group firstly, draws into the river scene artfully and reserves the ecological environment resource. The design is not only derived from the Italian classic essence, but is also integrated with the modern streamline design to form a neoclassical construction facade. It creates a multi-level and diversified life and recreation space system.

珠江御景湾总体规划源于世界规划大师手笔，崇尚人与环境的自然和谐。以“水”为主题，融合高贵意大利风情与人文于一体，首创半围合弧形组团式布局，巧妙引入江景资源和保留生态环境资源。汲取意大利古典精髓，融合现代的流线设计，构筑新古典主义建筑立面。营造出多层次、多样化的生活、休憩、邻里客厅等空间体系。



## The Gateway in Shenzhen 深圳金地名津

The whole garden takes water as its theme. The abundant theme of the waterscape is changeable. The waterline extends from the commercial space on the first floor to the residential space on the fourth floor, forming "tri-sky waterscape" layers.

整个园林以水为主题，多元丰富的主题水景，变化多端。水线从一楼商业空间延展至四楼的住宅空间，形成层层水景、处处润盈的“叠水三重天”。

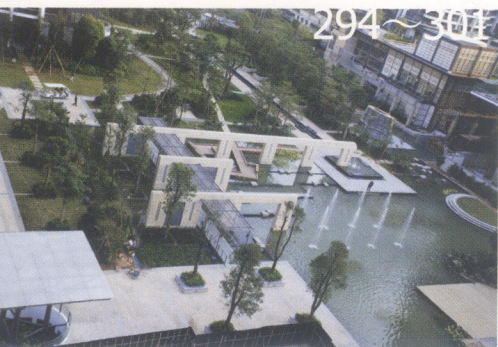




## Join-In The Grand in Suzhou 苏州中茵皇冠国际社区

The main idea of landscape design of Join-in Crown International Community is "waters heaven", which means adapting local conditions, making use of the advantages of developed water system, planning water as the skeleton to produce a various multi-layer waterscape. In addition, it combines the western with modern waterscape methods to process water and the elements of pavilion, terrace, tower, corridor, bridge and wood. In design style, it produces high-grade landscape and stresses the manufacturability and detailed decoration. The whole community gives people a visual effect of elegant, delicate, natural and modern. It is the symbol and representation of richness, high grand, and cultural personality.

苏州中茵皇冠国际社区的园林设计主题为“水域天堂”，就是因地制宜，利用基地内水系发达的优势，以水为骨架进行规划，制造多层次、多样性的水景。其次，结合西方及现代水景造法来处理水，装饰化处理亭、台、楼、廊、桥、林等各种造园元素，布置多样呼应组合。再次，在设计风格上，高品位打造景观，强调工艺性和细部装饰。整个小区给人一种高雅、精致、自然、具有时代性的视觉心境，是富有、高品位、高文化修养的象征和代表。



## CITIC Mangrove Bay in Shenzhen (Phase III & IV and Villa)

深圳中信红树湾（三、四期及别墅小院）

On the basis of the market acceptance of the early landscape of CITIC Mangrove Bay, L&A continues adopting the modern landscape design methods to combine the natural life with modern design successfully. They try to use the modern landscape language to express the modern living function and aesthetic taste and to convey the Lingnan life in space. On the basis of optimizing the space and function, they create a totally Lingnan-style garden. They integrate the plant design with live scene, shape an open area, and combine human with gardens to produce a Lingnan-garden residential community of modern style.

在深圳中信红树湾前期景观已得到市场接受的基础之上，奥雅继续延用现代景观设计手法，将自然生活与现代设计成功地结合起来，融现代生活于岭南自然之中，并探索用现代景观语言表达现代的居住功能与审美情趣，把岭南生活在空间中表达出来。在空间、功能优化的基础上，做完全岭南式的园林，将植物设计与硬景融为一体，塑造开敞的空间，把人与花园联系在一起，打造出具有现代风格的岭南园林式居住区。



## Tianshan Lakefront Garden in Shanghai 上海天山河畔花园

This community includes three independent blocks with entrances on both east and west sides. And these independent blocks have their own outdoor facilities: playground, fitness ground for adults and old people, green area, flower shelf and waterscape.

此小区包括三幢独立楼区，其东西两处各有入口，并且三幢独立楼区各有室外设施，如儿童游乐场、成人及老年人健身场、露天绿化区、花架休息处及水景。





308~315

## Hunan Electric Science & Technology Park 湖南电力科技园

The designer utilizes the idea of "inherits the regional culture, grasps the modern ideal space" in the design process, so he carries on the analysis in view of the regional characteristics of Changsha, and integrates the local characteristics with the construction of residential community. The structure of the garden is the way of combination. The community is divided into four courtyards and eight parks. The four courtyards are the Qing Zhu Lan courtyard, Ai Wan Feng courtyard, Ju Shi Ying courtyard and An Xiang Liu courtyard. The eight parks are Ke Xin park, Qin Xin park, Hui Xin park, Xin Xin park, Yi Xin park, Tian Xin park, Yue Xin park and Qing Xin park.

设计者在设计过程中运用“传承地域文化，把握现代理想空间”的理念，针对长沙地域特点进行分析，把当地的特色融入到小区当中，以此为关键思路着手设计。庭院结构为组合式，小区各组团分成四庭八苑。四庭分别为清竹兰庭、爱晚枫庭、菊石映庭和暗香流庭；八苑有可心苑、沁心苑、荟心苑、馨心苑、颐心苑、天心苑、悦心苑和清心苑。



316~327

## Hairun Riverside Garden in Fuzhou 福州海润滨江花园

The planting design of Hairun Riverside Garden follows the landscape planning principles of the whole community. It integrates the idea of landscape planning design and enhances the mood of scenic spots. The planting design of "human oriented" satisfies the residents' needs of physical and spiritual enjoyment, trying to create comfortable, safe, healthy and balanced ecological landscape.

海润滨江花园种植设计遵循整个小区的景观规划原则，融合景观规划设计的理念并提升景观景点的意境。种植设计以“以人为本”的宗旨满足小区业主对环境的物质享受与精神享受，努力创造舒适、安全、健康、平衡的生态型景观。



328~337

## Exhibition—World City(Phase I) in Guangzhou 广州会展·世界城(一期)

Exhibition—World City is located in the south of New Gangdong Road, Haizhu District, next to Huangpu Old Harbor. The overall project assumes rectangle from north to south. It adjoins Guangzhou Nanfei Orchard with ten thousand acres. It is the only low-density residential community in Guangzhou and the habitable area could compare favorably with Ersha Island. The project takes royal garden in Southeast Asia as the subject style. Combined with the slope terrain of the community, it builds the multi-level three-dimensional changeable landscapes with 5m-height difference of elevation.

会展·世界城位于海珠区新港东路南侧，黄埔古港旁。项目总体呈长方形，南北走向，毗邻广州南肺万亩果园，为目前广州市仅存的低密度住宅社区，居住空间媲美二沙岛。项目以东南亚皇家园林为主题风格，结合社区本身的坡地豪宅地势，营造出高低落差达5米的多层次立体多变景观。



# 01 Landscape for low-rise residential area 低层住区景观

Low-rise residential area adapts low-density urban population, which usually exists in suburbs and small town. The low-rise residential area mentioned in this book is mainly villa. Compared with other types of residences, the greatest strength of villa is close to nature, so the landscape design is one of the important marks to decide if the villa is good or bad. Speaking of the villa landscape, it must have a scientific and reasonable overall planning of environment landscape and advocate humanized design at the same time to achieve good landscape effect through natural community allocation, such as