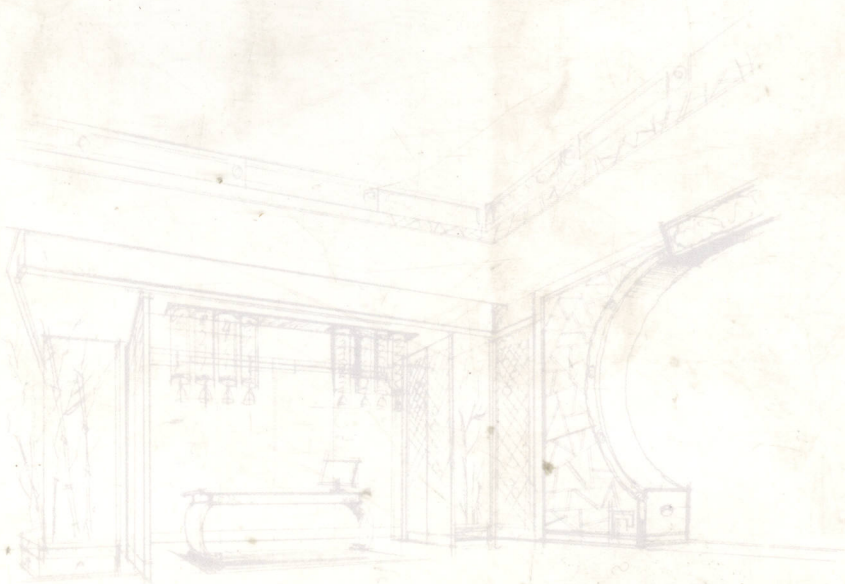


陈林室内设计事务所作品集

The Selected Opuses of Interior Design By Chen Lin Workshop

摩登
中式

Modern Chinese style



辽宁科学技术出版社





Modern Chinese Style

陈林室内设计事务所作品集

The Selected Opuses of Interior Design By Chen Lin Workshop

撰文：戴力农 摄影：刘圣辉 策划：袁媛 蔡希文 设计：蔡勇 翻译：王勤 插图：周峰

图书在版编目(CIP)数据

摩登中式: 陈林室内设计事务所作品集/戴力农撰文; 刘
圣辉摄影. 沈阳: 辽宁科学技术出版社, 2004.8
ISBN 7-5381-4251-7

I. 摩... II. ①戴... ②刘... III. ①餐厅-建筑装饰-建
筑设计-中国-图集 ②宾馆-建筑装饰-建筑设计-中
国-图集 ③文娱活动-公共建筑-建筑装饰-建筑设计-中
国-图集 IV. ①TU242.4-64 ②TU247.4-64
中国版本图书馆CIP数据核字(2004)第085095号

出版者: 辽宁科学技术出版社	Publisher: LiaoNing Science and Technology Press
地址: 沈阳市和平区十一纬路25号 邮编: 110003	Address: No.25 ShiYiWei Rd., ShenYang, China 110003
印刷者: 利丰雅高印刷(深圳)有限公司	Printing: LeeFung-Asco. Printers Holdings Limited
制版: 上海圣辉制版电脑有限公司	Plate Making: Shanghai ShengHui Process Computer Co., Ltd.
发行者: 各地新华书店	Issuer: XinHua Bookstore all over the country
开本: 889mmX1194mm $\frac{1}{2}$	Format: 889mmX1194mm $\frac{1}{2}$
字数: 100千字	Word Count: 100,000.00
印张: 17	Printed Sheet: 17
插页: 4	Interleaf: 4
印数: 1~2500	Impression: 1~2500
出版时间: 2005年1月第1版	Publishing Time: First Edition Jan. 2005
印刷时间: 2005年1月第1次印刷	Printing Time: First Edition Jan. 2005
责任编辑: 陈慈良	Chief Editor: Chen Ci Liang
封面设计: 蔡勇	Cover Design: Cai Yong
插图: 周峰	Illustration: Zhou Feng
英文翻译: 王勤	Translator: Wang Qin
版式设计: 蔡勇	Format Design: Cai Yong
特约编辑: 张书鸿	Senior Editor: Zhang Shu Hong
责任校对: 东戈 / 刘莉	Examiner: Dong Ge / Liu Li

定价: 220.00元	Price: RMB 220.00
联系电话: 024-23284360	Tel: 024-23284360
邮购咨询电话: 024-23284502	Mail-Order Tel: 024-23284502
E-mail: lkzsb@mail.lnpgc.com.cn	E-mail: lkzsb@mail.lnpgc.com.cn
http://www.lnkj.com.cn	http://www.lnkj.com.cn

前言 PREFACE

陈林公司是什么？什么是陈林公司？

前一个问题好回答：陈林公司，学名杭州陈林室内设计事务有限公司，生于1994年3月，住在杭州市中山北路171号，有15员大将，都干室内设计。陈林公司是杭州的招牌：它已经出名，正在出名，也继续出名。

后一个问题就不那么好回答了。有人说“金碧辉煌”是陈林公司，那你只看到它的富华浓情的一面；有人说“玉玲珑”是陈林公司，那你只看到它“千机百变”的一面；有人说“知味观”是陈林公司，那你只看到它深韵传统的一面；有人说“粤浙会”是陈林公司，那你只看到它自然和谐的一面……陈林公司式的标签还不仅于此：繁复与清简，古典与摩登，沉稳与多变，享乐与自然……

有人说陈林公司是享乐主义代表，摩登中国的代言人。我们说它是一个矛盾的综合体，一个处于夹缝时代的弄潮儿。让我们以一组并置句来定义它：

陈林公司是求索中国传统文化的吟诗诗人。它的中国风格是诗意的；有时它刻意地留一些历史片段让人直接地去体会（如“知味观”中的民居屋架）；有时它巧妙地借来传统园林的手法让今人体味再三后去悟“道”（如“玉麒麟”中设计的“看与被看”的场景）；有时它以浓烈的色调淹没你（如“纯+真品”中的大

红）；有时它又在细微之处让传统“冲撞”你（如大量的中式装饰）。陈林公司的传统是颠倒、扭转、撕裂后的缝合。

陈林公司是迷恋古典元素的拼图大师。它手中的古典是有着跨越古今、融合东西的代表；有时，它借取古典空间格局的恢宏气势（如“玉麒麟”的三层贯穿的中庭）；有时它陶醉于烛光浮影的怀古气氛（如“粤浙会”的烛枝灯）；有时它细心地从古代长卷中撷取一段序列（如“粤浙会”的檐部金箔画）；有时它又不经意地在“现代词典”中夹杂了一些古典长句（如“帝豪娱乐城”的玻璃雕花柱）。陈林公司的古典是各种符号断裂后的重组。陈林公司是游戏于时尚与前卫之间的少年心情，是轻松的，又是深刻的，是不经意的，又是引人思索的；有时它的桌、椅、板凳都“能言善语”（如“玉玲珑”的异形椅）；有时它把玩具玩艺儿摆到了大雅之堂（如“新百乐宫”的棋牌室前柜）；有时它干脆取消了卫生间的大门和标牌（如“粤浙会”的二楼卫生间）；有时又玩起了大红加鲜绿的色彩游戏（如“玉玲珑”的色彩）。陈林公司的时尚和前卫需要想象力，去解读它们需要超级想象力。陈林公司是善于平衡商业与创意的智者勇者。它总能游刃于业主的限制、基地的约束和创意的挥洒之间；我们在“华丰宾馆”看到它在狭窄的墙壁、低矮的走廊和苛刻的施工要求之后的奇迹——

独创地为这些小小蜗居赋予个性化、现代化的个性；我们在“玉玲珑”中看到它用浓色重影塑造出饱满丰富的视觉感受的同时又降低了成本；我们在“粤浙会”中找到它的竹帘，在“知味观”中找到它的黄纱，在“玉麒麟”中找到它的修竹，价廉物美特美的寻常物什在它的手中往往大派用场。陈林公司的智慧和大胆成就了它的辉煌。

陈林公司是善用技术和材料的“精工巧匠”，这使得它的每一作品都成为通向完美的过程。陈林公司很精通材料，竹、木、织物、金属、瓷，在它的作品中都信手拈来；陈林公司又熟谙工艺，没有细致的做工是无法造成美伦美奂的真实，特别对于古典装饰的表达有着极致的要求；陈林公司的品位很高，对名牌的追求使它在许多案例中甚至不惜重金购得进口真品；陈林公司追求的是无限的完美，有时没有现成的，它就独创一套工艺，使之惟我独用。陈林公司的技术和材料都是极致的。也许应给陈林公司的定语还有许多。

陈林公司是个追求完美，不断突破自我的集体。相信到了两年后、五年后，我们再来解读它，会有更多的惊叹和欣喜。

What does Chen Lin Company mean? What is Chen Lin Company?

The first question is easy to answer. Hangzhou Chen Lin Interior Design Co. Ltd., founded in March, 1994, and located on 171 North Zhongshan Rd., having 15 interior designers. The company is very famous in Hangzhou.

The second question is not easy to answer. If The Goldtime, or Yu Lin Long, or Zhi Wei Guan, or Yue Zhe Hui is Chen Lin Company, then they just shows one face of Chen Lin Company. Besides, complicated and simple, classical and modern, steady and various, enjoyment and nature.....

It's said that Chen Lin Company is a representative to modern China. However, we think that it is filled with contradiction. We can define it this way:

Sometimes it leaves the mark of history for people, like the roof truss in Zhi Wei Guan; sometimes it borrows magically views from traditional gardens, like the views in Yu Qi Lin; sometimes it uses strong hews, like red color in Junction; sometimes it presents Chinese decoration. Chen Lin Company prefers classical elements. Sometimes

it presents the vigorous air of classic layout, like the shared hall in Yu Qi Ling; sometimes it presents the nostalgic air, like the candle lamps in Yue Zhe Hui; sometimes it adds classical elements to modern decoration, like glass carving columns.

Chen Lin Company is a combination of fashion and modern. Sometimes its chairs, tables are vivid, like the chairs in Yu Lin Long; sometimes it brings the toys into the hall, like the cabinets in front of the rooms for chess and cards in New Happiness Palace, sometimes it removes the doors of loos, like the toilet on the second floor in Yue Zhe Hui; sometimes it puts red and green colors together, like the colors in Yu Ling Long. The company's fashion needs imagination, and to understand them also needs imagination, too.

Chen Lin Company is good at making a balance between business and innovation. From Huafeng Hotel, we can see that it gives this small and shabby house modern

personality; from Yu Ling Long, we can see the strong colors create good visual feeling, which also decreases the cost; in Yue Zhe Hui, we can find bamboos; in Zhi Wei Guan, we can find yellow yarns; in Yu Qi Lin, we can find slender bamboos. The ordinary objects are made bug things become of Chen Lin Company.

This company is good at making use of technology and materials. It knows various materials well, like bamboos, wood, fabric, metal, porcelain. Apart from this, it also knows craft well, having high demands of classical decoration. The company has so good taste that it purposes expensive imports commodities. Sometimes, it will create a kind of craft because it pursues perfectness.

Maybe Chen Lin Company should be given more adjectives. In short, the company pursues perfectness and surpasses itself. We believe that it will bring us more surprise after two or five years.

目录 CONTENTS

旺角·粤浙会	6	YUE ZHE HUI
玉玲珑	44	YEE-CHINO
玉蜻蜓	74	JADE DRAGONFLY
玉麒麟	88	YUQILIN RESTAURANT
知味观	104	ZHI WEI GUAN
帝豪娱乐城鲍翅馆	122	BAO CHI GUAN
杭州新百乐宫	140	NEW HAPPINESS PALACE
金碧辉煌	164	THE GOLDTIME
华丰宾馆	184	HUAFENG HOTEL
纯+真品	196	THE JUNCTION



| 旺角·粤浙会 YUE ZHE HUI |

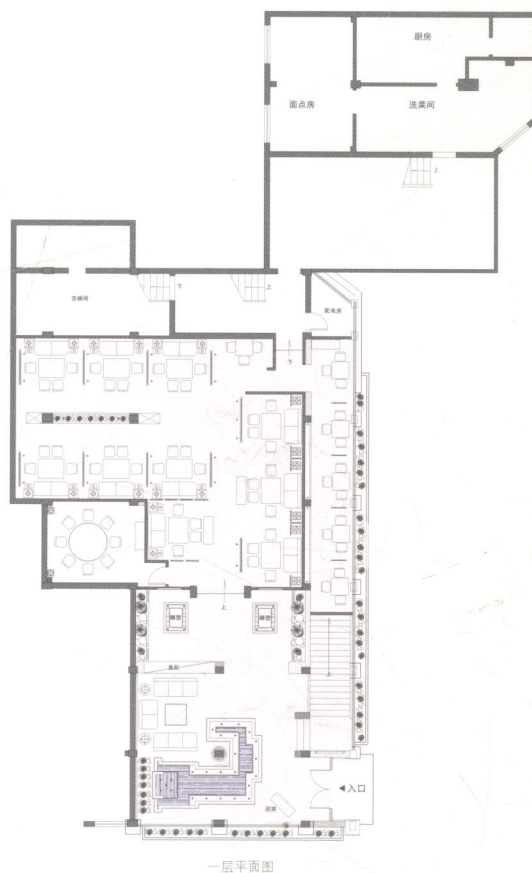
旺角·粤浙会

YUE ZHE HUI

旺角·粤浙会的业主是杭州的名人名家大酒店。以往的经营一直是定位在“大众化”上，这是第一次做高档的精品餐厅。由于以往就对中式风格感兴趣，这次经营定位的转变就成全了这个夙愿，改大众型转向精致小巧型。总共餐厅有三层楼。三楼全是包厢，一、二层也以隔断隔成许多开敞的小区域，精雅细致，使得餐饮成为一种从容。整个空间布局十分清晰、理性，但每一层又都有不同的变化。交通流线通畅、有条理，减少了穿越迂回引起的干扰。环境的定位是安静的、素雅的、精致的，避开了喧嚣，减少了浮华。在大多数就餐空间中，色彩都采用柔和而低纯度的暖色，除了厅堂和主景的地方用了少量的鲜色。连设计师最喜爱的大红也难得一用。色彩对比还是以明度对比为主，檐部装饰、吊顶框架、罩、构架式的隔断都以深色施就，保持中式空间的线条美。园林的植物、图案、门窗造型还是符号化了以后点缀在各个角落，在不经意的時候把你带入江南的山水人家。特别应提到的应是二楼的卫生间，它们没有门！设计师以空间的转折巧妙地挡住了视线。它们也没有标牌！一尊雕像、一袭青帘，无需文字，以无国界的视觉语言点出主题，令人印象深刻，也是一番创新吧！



This restaurant and its owner are very famous in Hangzhou. The operation of the past used to face the common people. This is their first time to make it become a first-grade restaurant. As the owner is interested in Chinese style, this change of operation makes the dream come true. The restaurant has three floors. The first floor and the second are partitioned into many small areas. All the boxes are on the third floor. The layout of the whole space is very clear and sensible, but that of every floor is different. The route is unblocked and in order so that no matter guests or the servants don't need to walk by a round-about way. The environment is quiet, simple but in good taste, and exquisite. In most space of eating area, some soft and warm colours are used, except some halls and main-view area, using few gay colors. Even the bright red, the designer's favorite colour, is scarcely used. The contrast of brightness is main contrast of color. The eaves decoration, the cover, the partition are all dark colors, maintaining the beauty of lines. The plants, patterns, and the shape of the doors and windows are all coded in every corner, which bring guests naturally into the residential houses on the Yangtze Delta. Besides, the loos should be specially mentioned because they have no doors! The designer makes use of turning the space to keep off the sight. They have no signs, no any writings, only one stature, one curtain. It's impressive that the visual language without national boundaries present the theme. What a innovative decoration!



1. The most space of the eaves is decorated with drawings, except this one, which is decorated with a circle of suspended ceiling, adding a little wood achitrave.
2. The round windows in the gardens on the Yangtze Delta become the frames of the mural painting in the restaurant. They are filled with heavy valance.

1. 大多数空间的檐部都以画装饰，独独这一间作了简洁的一圈吊顶，附上一点细木线脚。
2. 江南园林中的圆形窗化作餐厅壁面的画框，被重重帷幔深封围合。





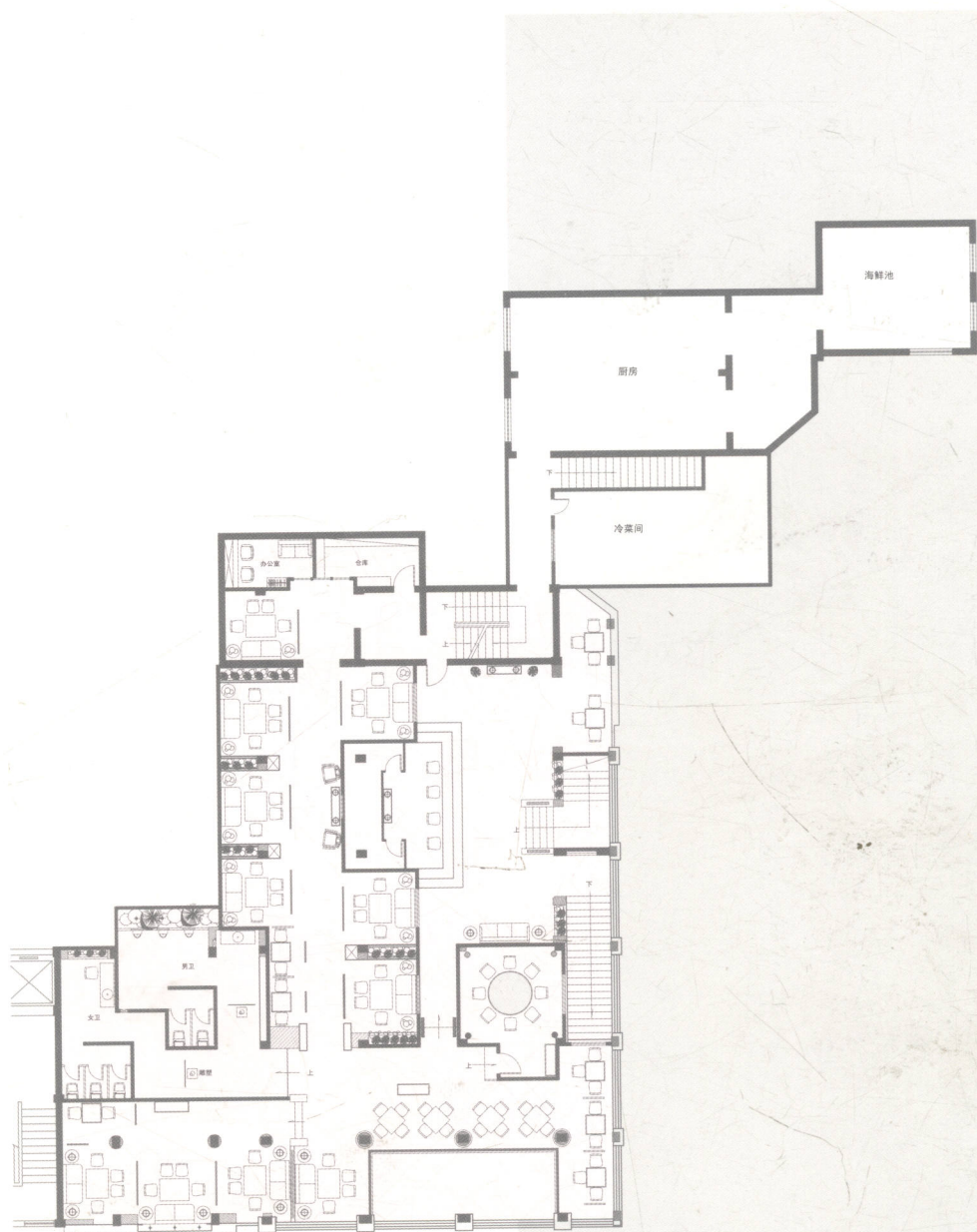


3. Several lotus pool in the entrance hall is gradational, which is one of designer's unique techniques.

3.入口大厅一组莲池是设计师的独特手法之一，层次很丰富。







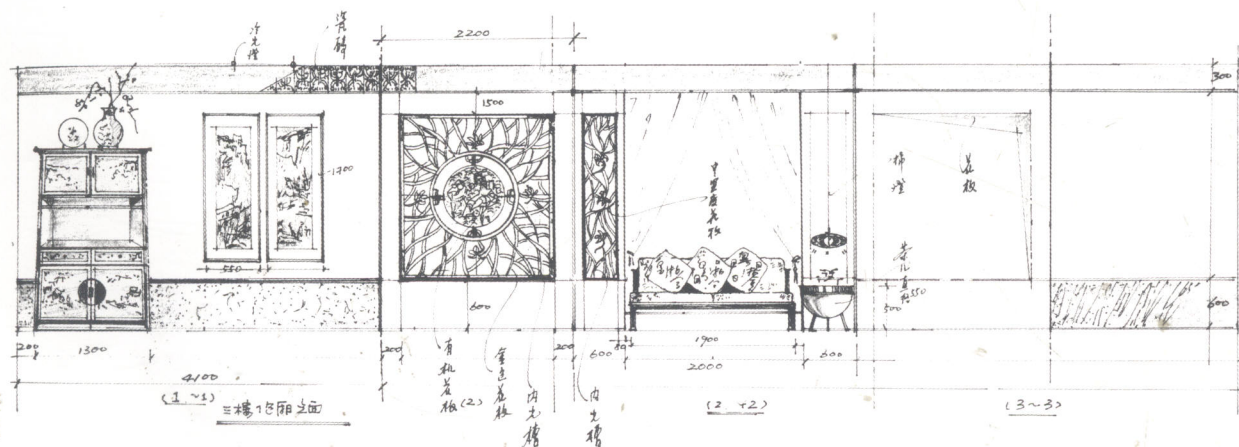
二层平面图

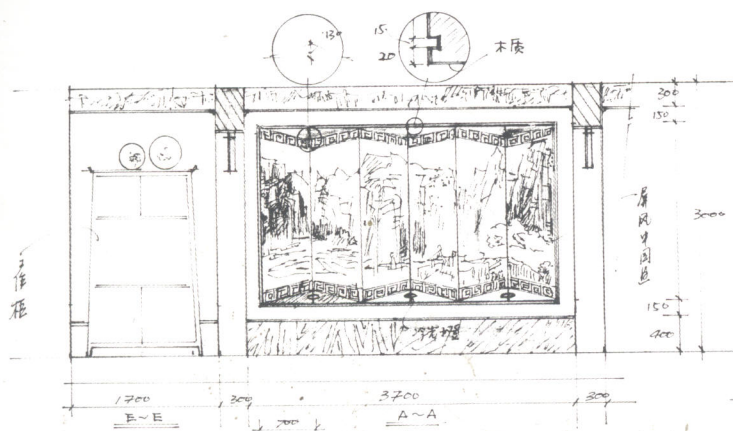
4.红墙的喧闹更衬托出莲池的宁静与内省。

5.莲花性本洁，清雅人自来。

4.The bustle of the red wall serves as a foil to the quietness of the lotus pool.

5.The nature of lotus is clean, which will bring similar men.





6.包厢的色彩比较和谐，檐部一圈的国画十分精致、古雅。



6. The color in every room is harmony, and the Chinese painting on the eaves is very refined and elegant.

