

全国中等卫生学校教材

临 床 检 验

(供临床检验士、检验士专业用，卫生检验士专业选用)

	张绍林	主编	
吴玉宸	余祥美	杨佩元	
周勤能	曾世杰	张绍林	编写
	吴良行	主审	
王淑娟	吴良行	徐世麟	审稿

四川科学技术出版社

责任编辑：林思聪
封面设计：李文金
技术设计：杨璐璐

全国中等卫生学校教材 **临 床 检 验**

四川科学技术出版社出版 (成都盐道街三号)
四川省新华书店发行 7 2 3 4 工厂印刷

开本787×1092毫米 1/16 印张34.25 字数775千 插页 9
1986年5月第一版 1991年3月第6次印刷
印数：66001—74700

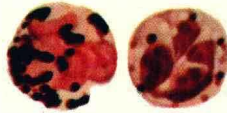
ISBN 7-5364-0425-5/R·75 (课) 定价：7.90元



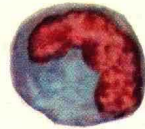
中性粒细胞



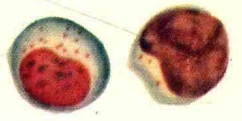
嗜酸性粒细胞



嗜碱性粒细胞



单核细胞

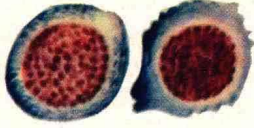


淋巴细胞

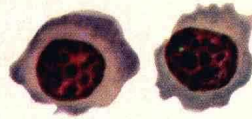
外周血常见五种白细胞



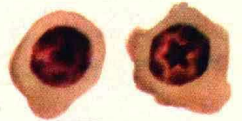
原红细胞



早幼红细胞



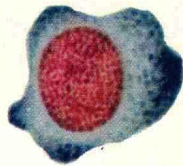
中幼红细胞



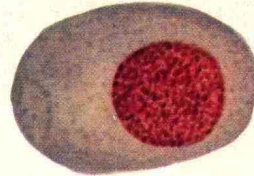
晚幼红细胞



原巨幼红细胞



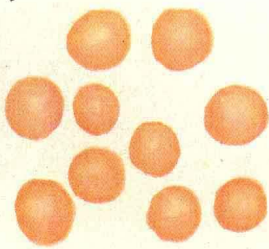
早巨幼红细胞



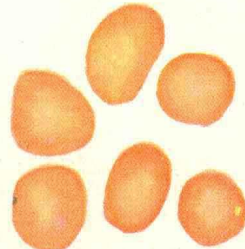
中巨幼红细胞



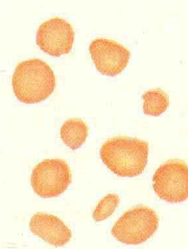
晚巨幼红细胞



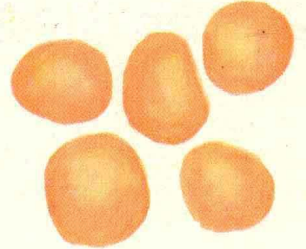
正常红细胞



大红细胞



小红细胞



巨红细胞



畸形红细胞



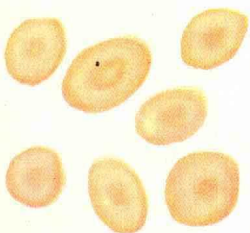
椭圆红细胞



镰状红细胞



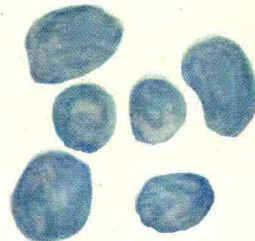
半月状红细胞



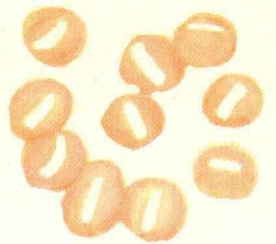
靶形红细胞



多色性红细胞



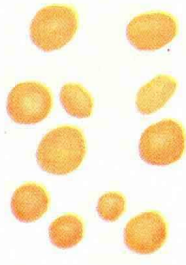
嗜碱性红细胞



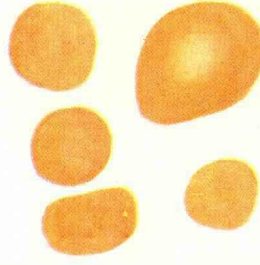
口形红细胞



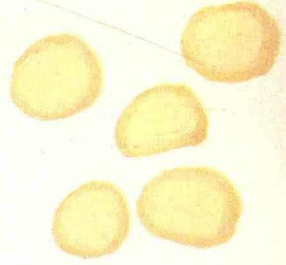
低色性小红细胞



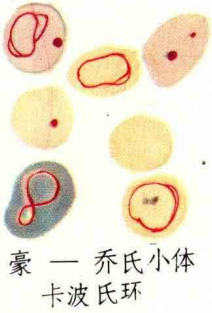
高色性小红细胞



高色性大红细胞



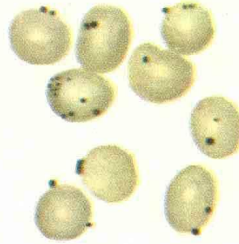
低色性大红细胞



豪 — 乔氏小体
卡波氏环



点彩 碎核



Heinz 小体



皱缩形 棘形
锯齿形 靴刺形



C



I



I

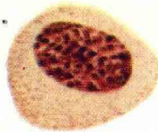


II



IV

网织红细胞



中性粒细胞



中



晚



杆



分



叶

原粒

幼



幼



核



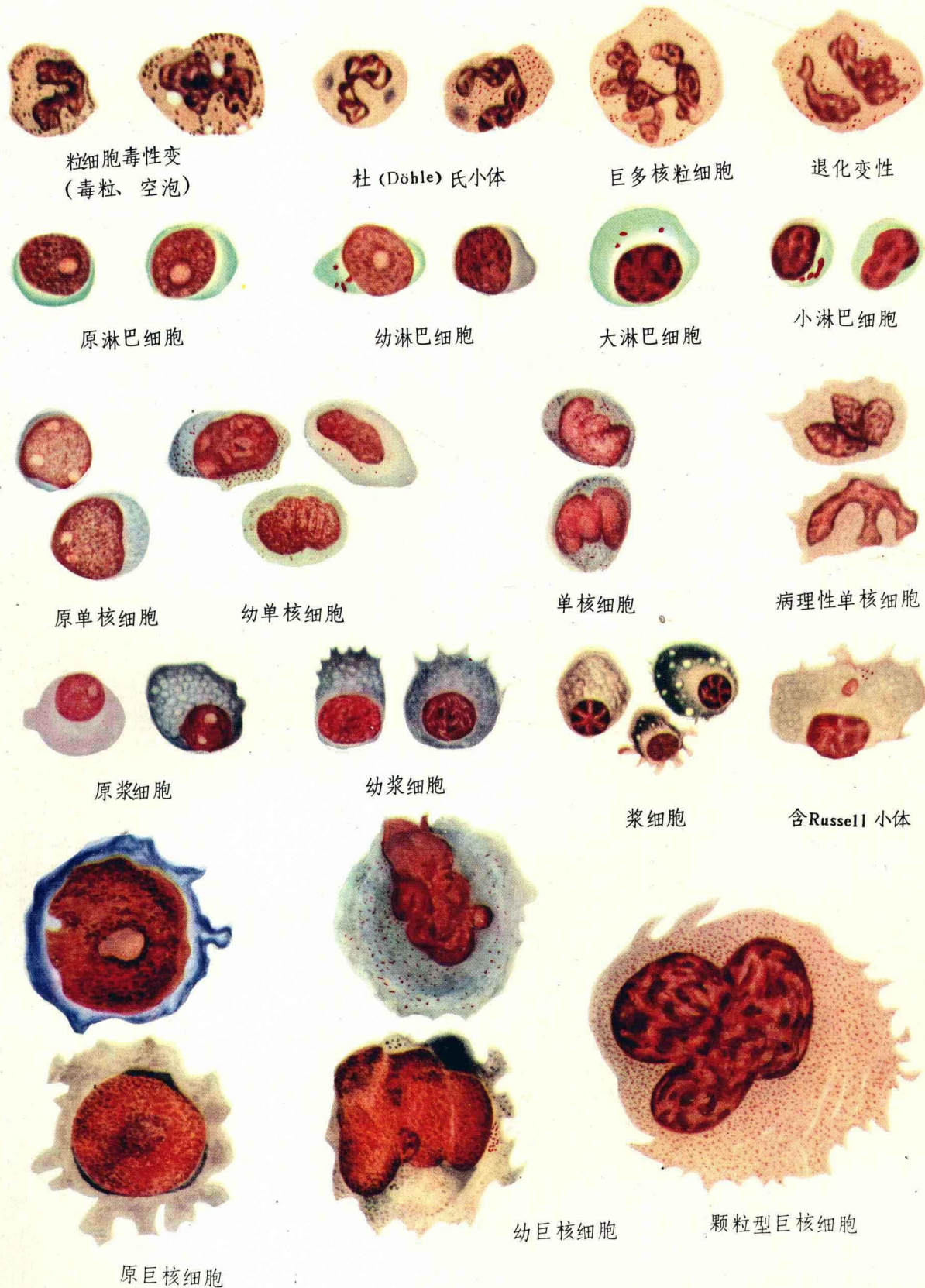
核



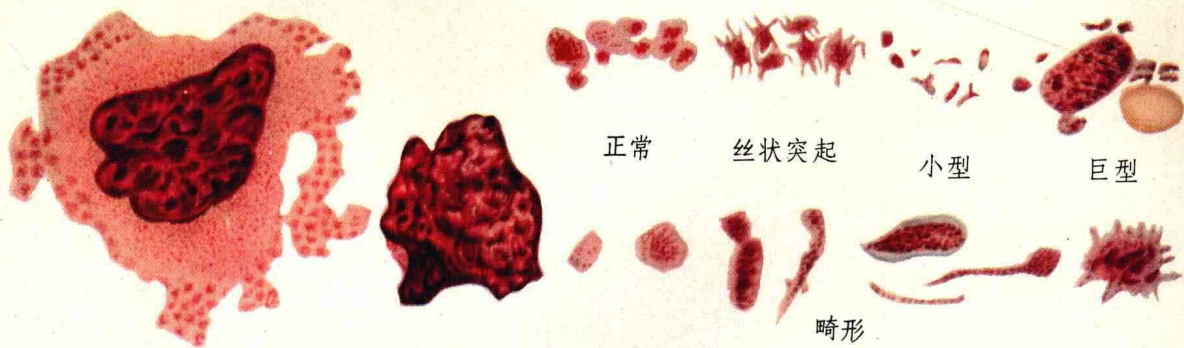
早幼粒



嗜碱性粒细胞



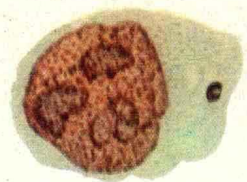
彩图3



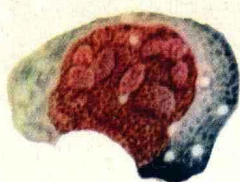
脱血小板巨核细胞

裸核(巨核细胞)

血小板



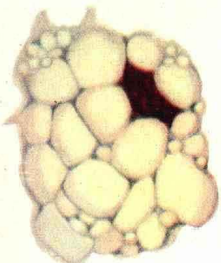
网状细胞(无颗粒型)



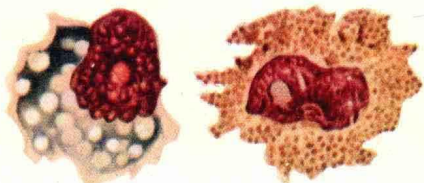
未分化网状细胞



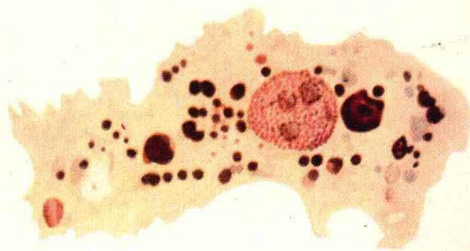
颗粒型网状细胞



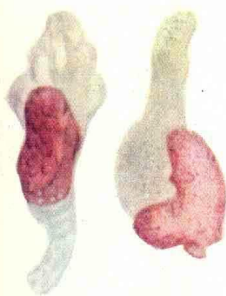
脂肪细胞



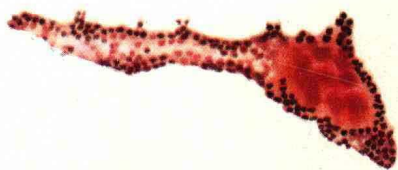
嗜酸组织细胞



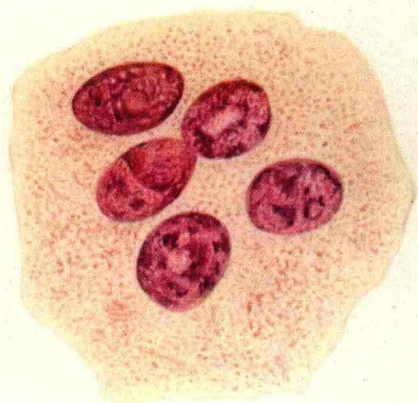
吞噬性网状细胞



内皮细胞



组织嗜碱细胞



破骨细胞



成骨细胞



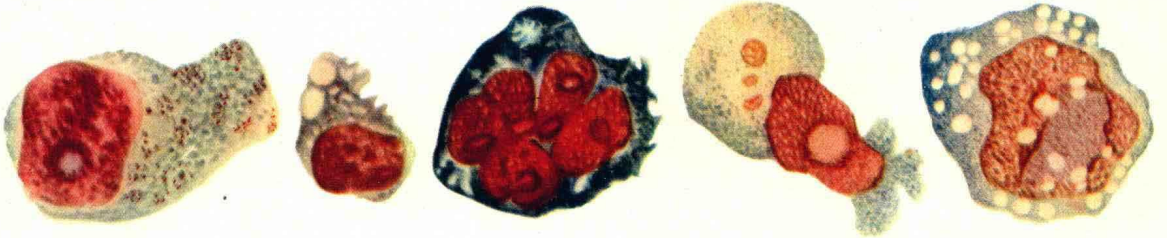
单核细胞型

浆细胞型

幼稚型

原始型

病毒感染常见异型淋巴细胞



异常组织细胞

多核巨细胞

异常组织细胞



异常组织细胞

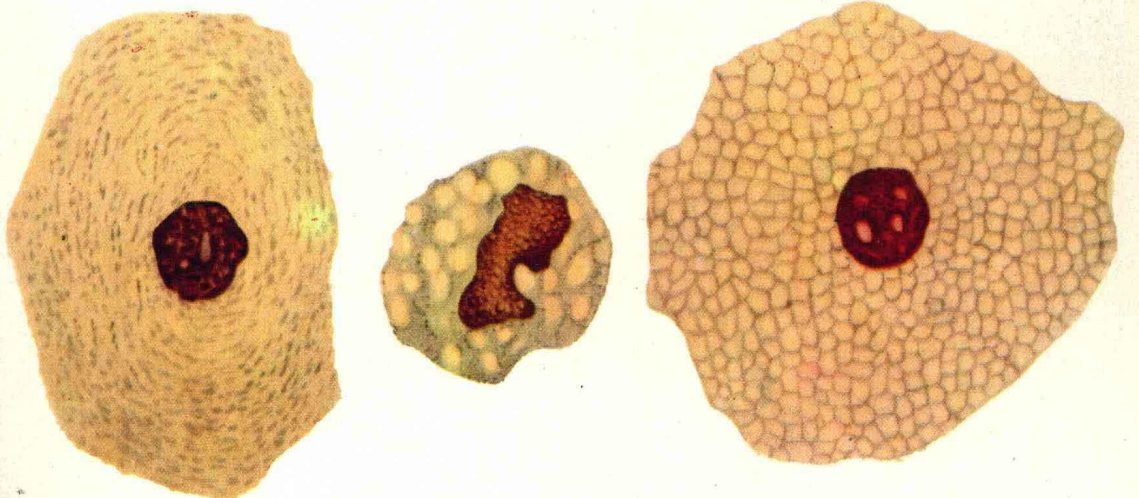
巨型吞噬性组织细胞

异常组织细胞

单核样组织细胞

吞噬型组织细胞

恶性组织细胞

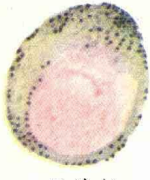


高雪 (Gaucher) 氏细胞

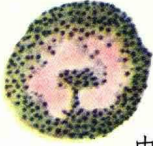
尼曼-匹克 (Niemann-Pick) 氏细胞



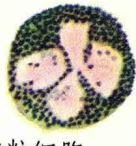
原粒



早幼粒



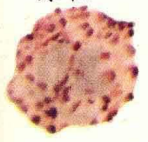
中性粒细胞



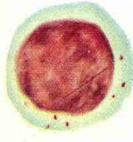
嗜酸性粒细胞



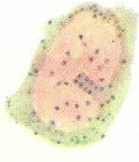
中性粒细胞



嗜碱性粒细胞



淋巴细胞



单核细胞



中幼红细胞



单核细胞

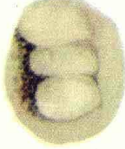


过氧化酶染色

非特异性酯酶染色



-



+



++



++++



++++

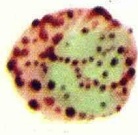
中性粒细胞碱性磷酸酶染色



中性粒细胞



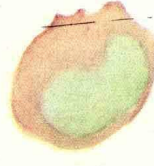
嗜酸性粒细胞



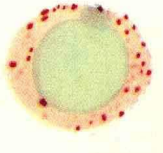
嗜碱性粒细胞



淋巴细胞

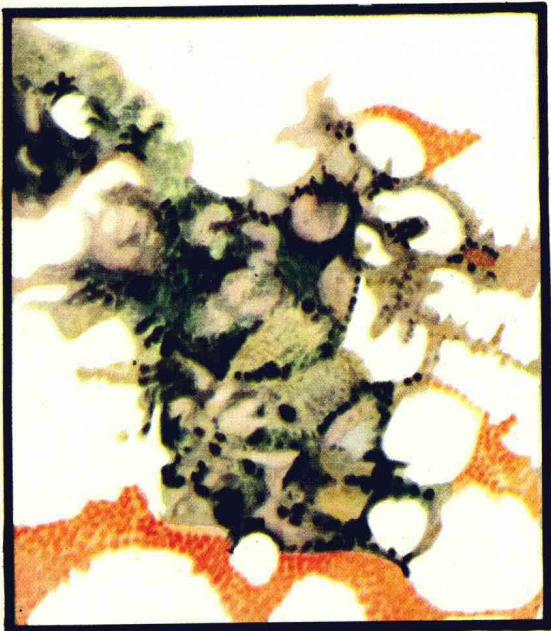


单核细胞

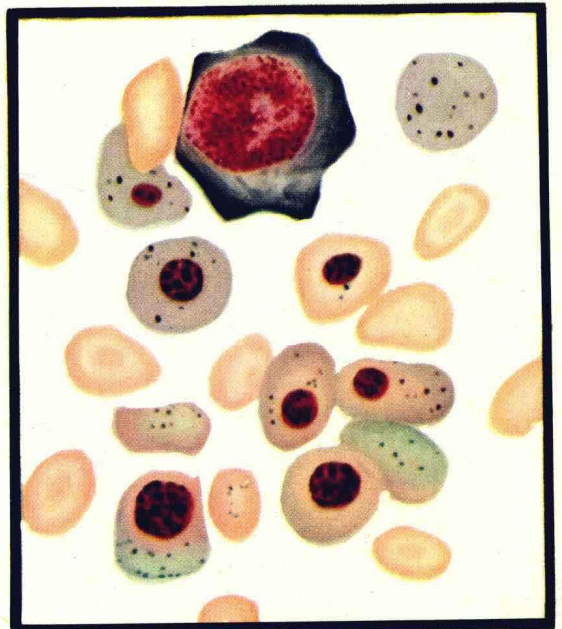


淋巴细胞

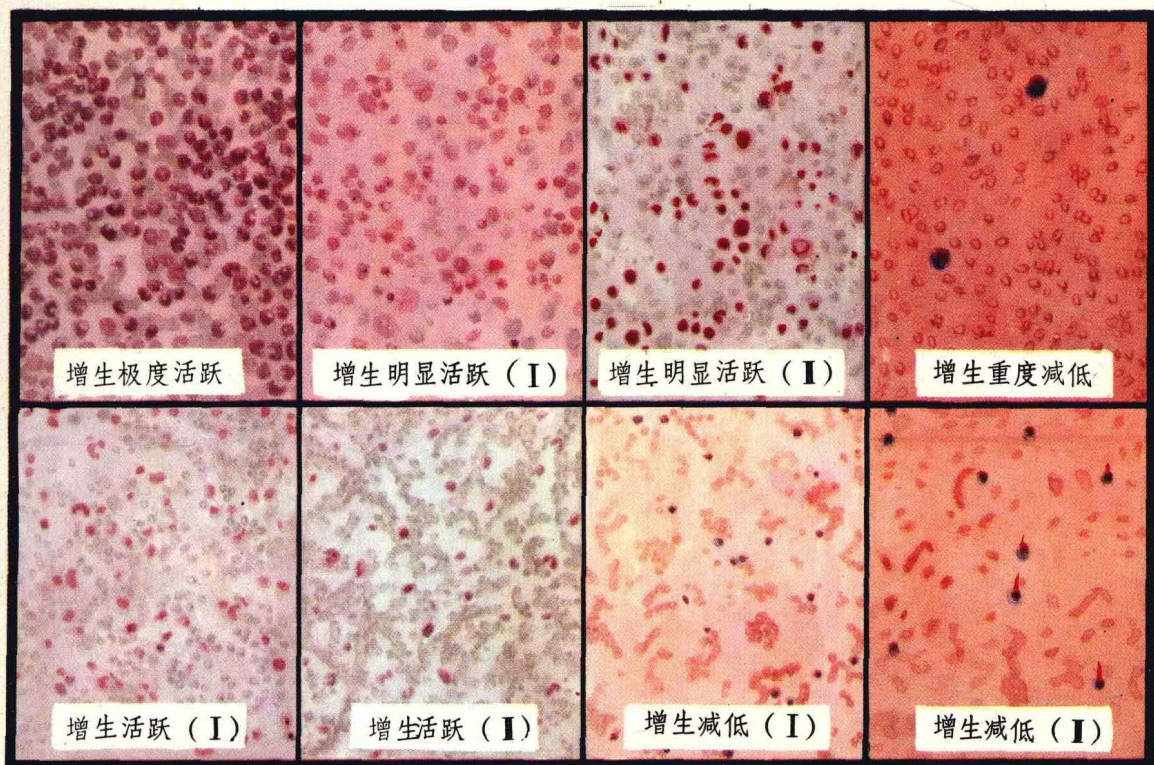
糖原(PAS)染色



细胞外铁



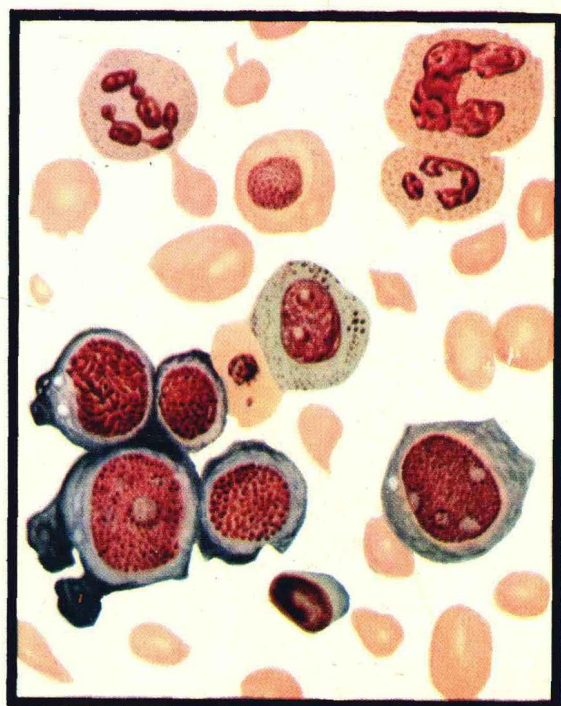
细胞内铁(地中海贫血)



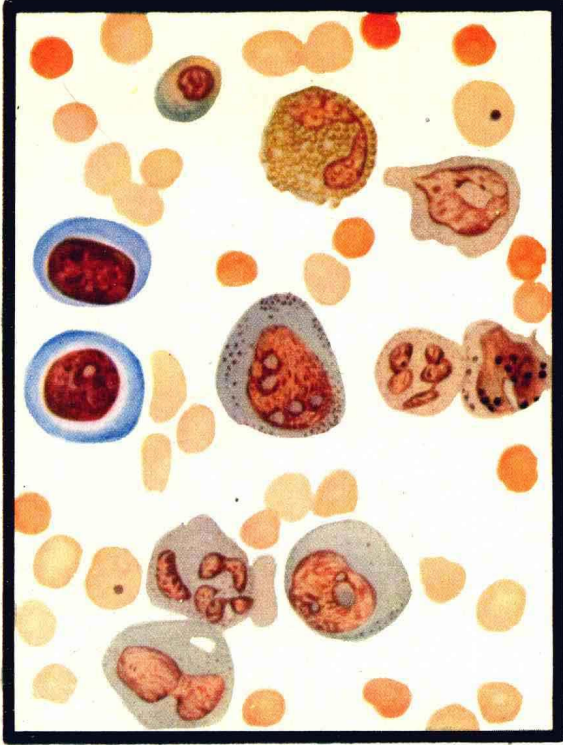
骨髓增生程度估计 (低倍视野)



钩虫病性贫血血象



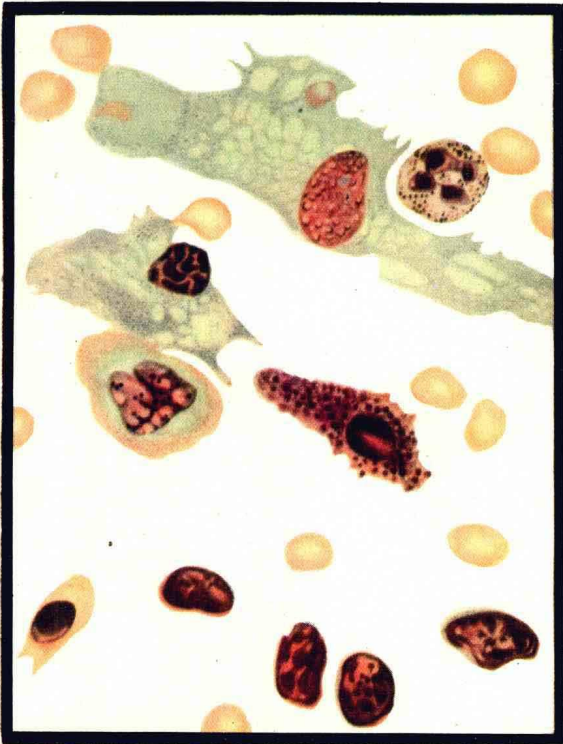
巨幼红细胞性贫血骨髓象



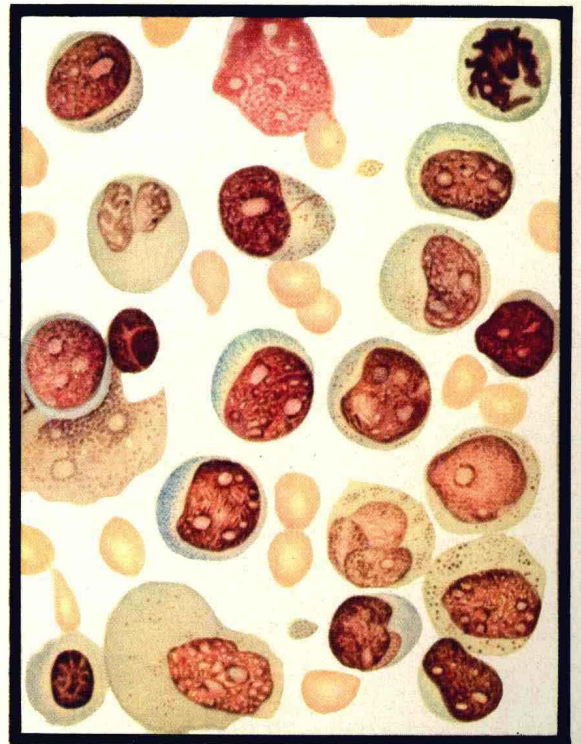
球形红细胞溶血性贫血骨髓象



地中海贫血血象



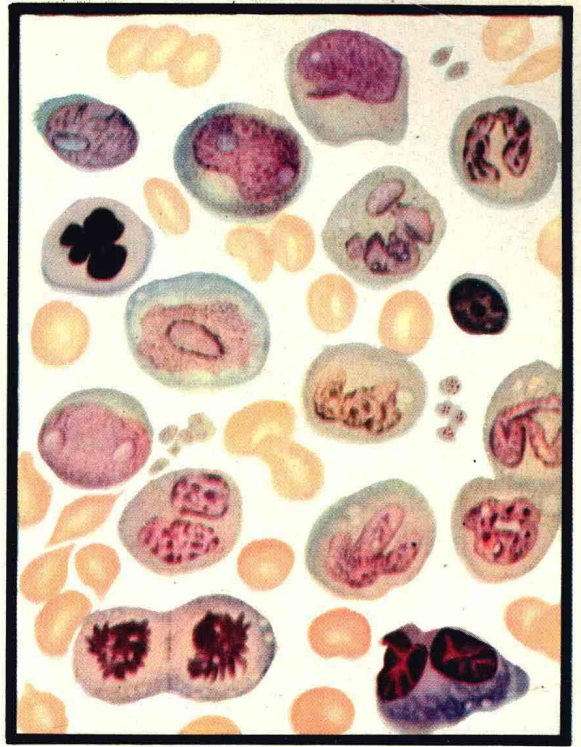
再生障碍性贫血骨髓象



急性粒细胞性白血病骨髓象



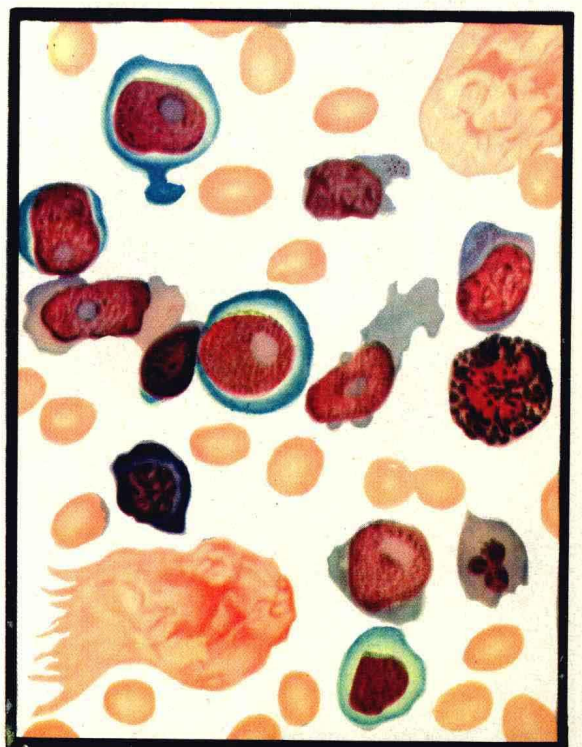
慢性粒细胞性白血病血象



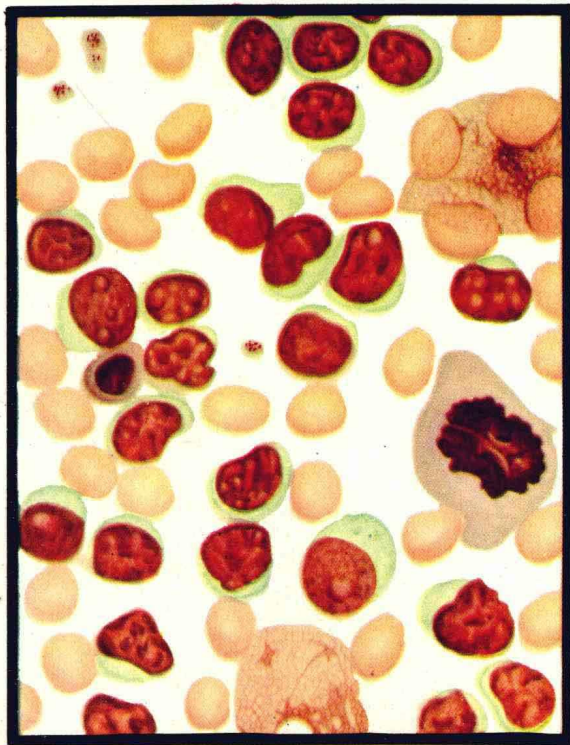
急性粒单细胞性白血病骨髓象



急性单核细胞性白血病血象



急性淋巴细胞性白血病血象



慢性淋巴细胞性白血病骨髓象



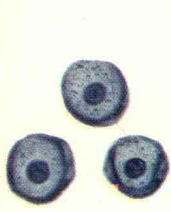
慢性红白血病血象



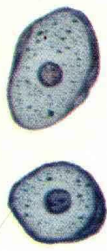
红斑性狼疮细胞



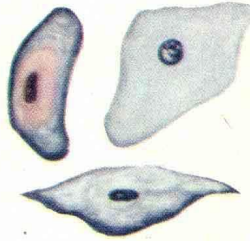
多发性骨髓瘤的骨髓象



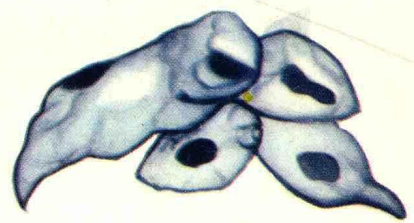
内底层细胞



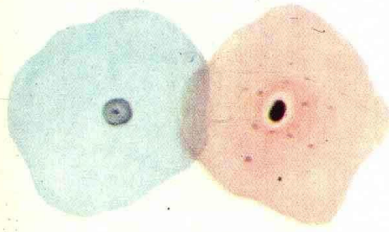
外底层细胞



中层细胞



妊娠细胞



表层角化前细胞

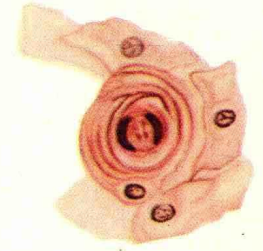
角化细胞



完全角化细胞

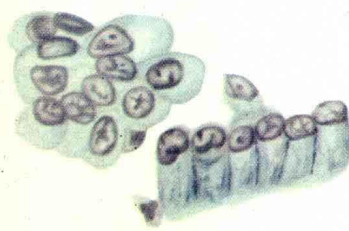


内角化层细胞



鳞状上皮细胞珠

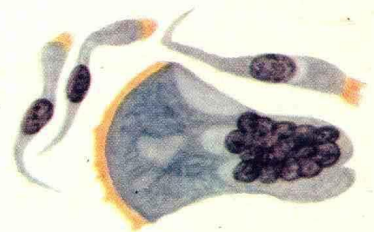
鳞状上皮细胞(阴道)



粘液柱状上皮细胞



纤毛柱状上皮细胞(子宫)



支气管纤毛柱状上皮细胞



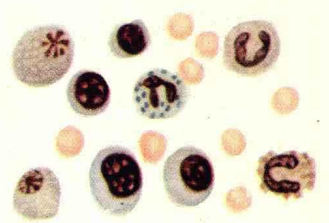
小吞噬细胞



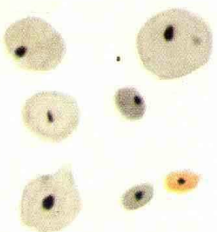
大吞噬细胞



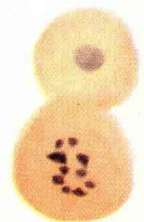
多核异物巨噬细胞



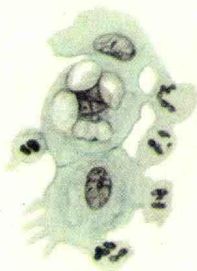
血细胞



核固缩



核破裂、溶解



核肿胀、空泡



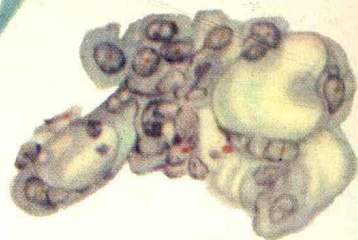
退化变性



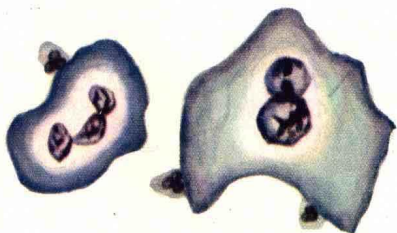
蜘蛛形(炎症)



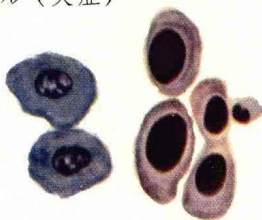
蝌蚪形(炎症)



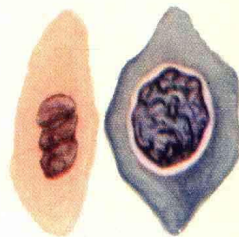
增生性宫颈内膜细胞



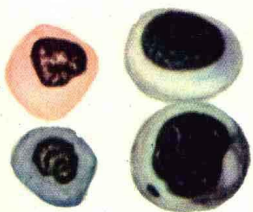
中、表层核异质(炎症)



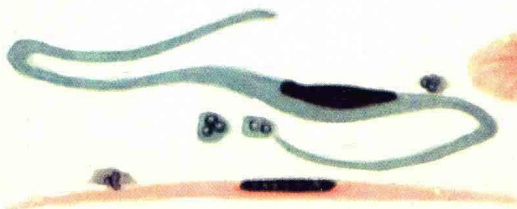
底层核异质(炎症)



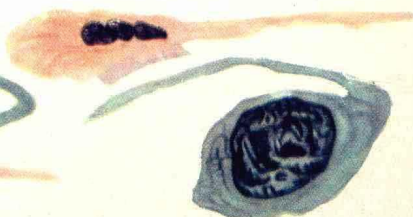
癌前核异质



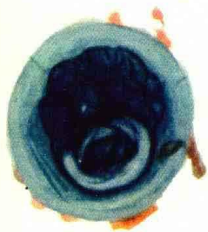
圆形癌细胞(鳞癌)



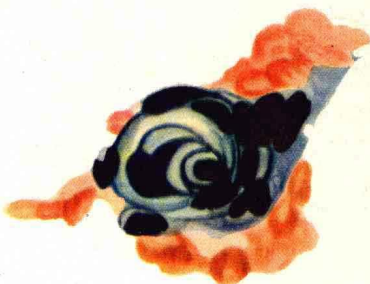
纤维形癌细胞(鳞癌)



蝌蚪形癌细胞(鳞癌)



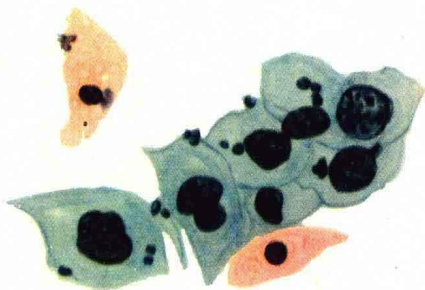
癌细胞封入



癌珠(宫颈鳞癌)



宫颈鳞癌



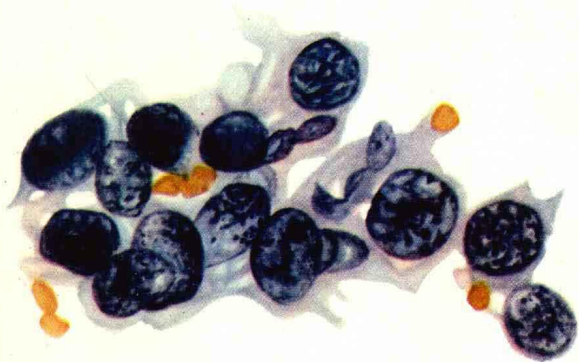
宫颈鳞癌



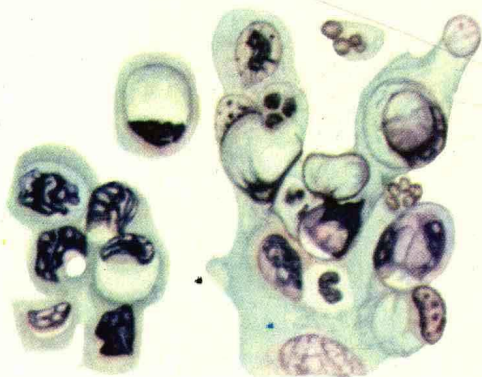
宫颈鳞癌



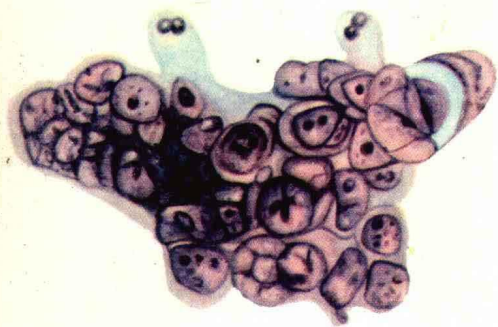
宫颈早期未分化癌



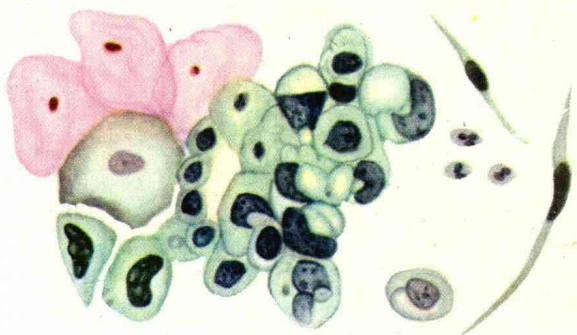
子宫颈未分化癌细胞



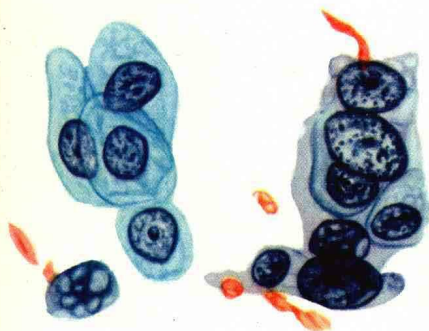
子宫颈腺癌细胞



子宫颈腺癌细胞



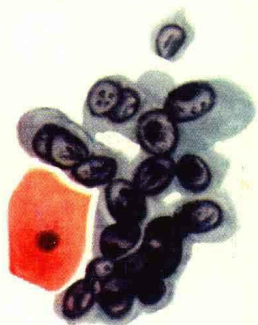
子宫颈腺棘癌细胞



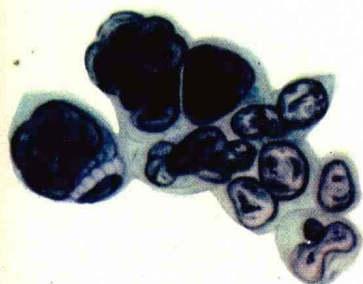
食管鳞癌（分化好）细胞



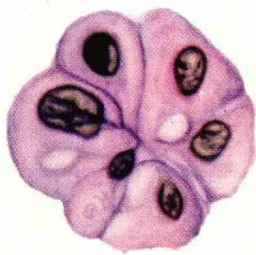
食管鳞癌细胞



食管未分化癌细胞



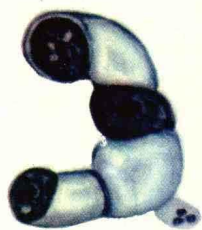
食管未分化癌细胞



贲门核异质细胞



贲门鳞癌细胞



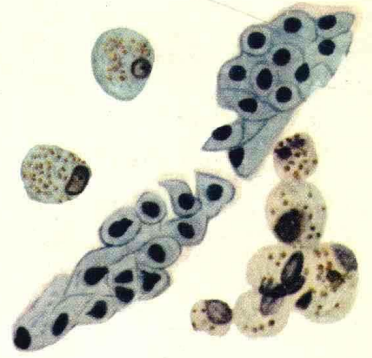
贲门腺癌细胞



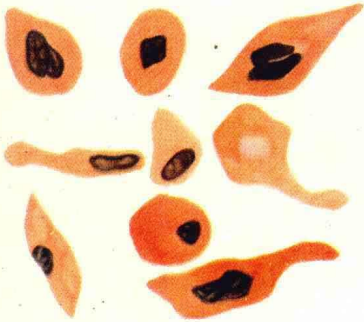
胃粘液腺癌细胞



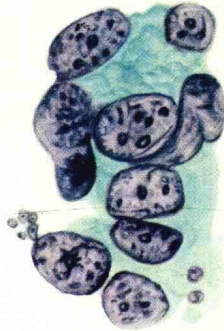
胃粘膜肠上皮化生细胞



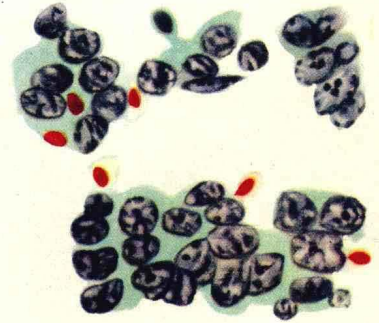
痰内灰尘细胞、鳞状上皮化生细胞



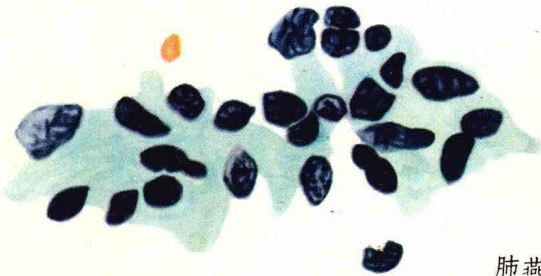
肺鳞癌细胞



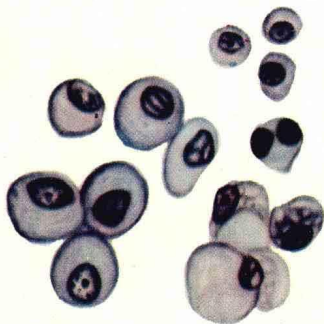
肺腺癌细胞



肺未分化癌细胞



肺燕麦癌细胞



正常与退化间皮细胞



腹水内腺癌细胞



腹水内腺癌细胞