

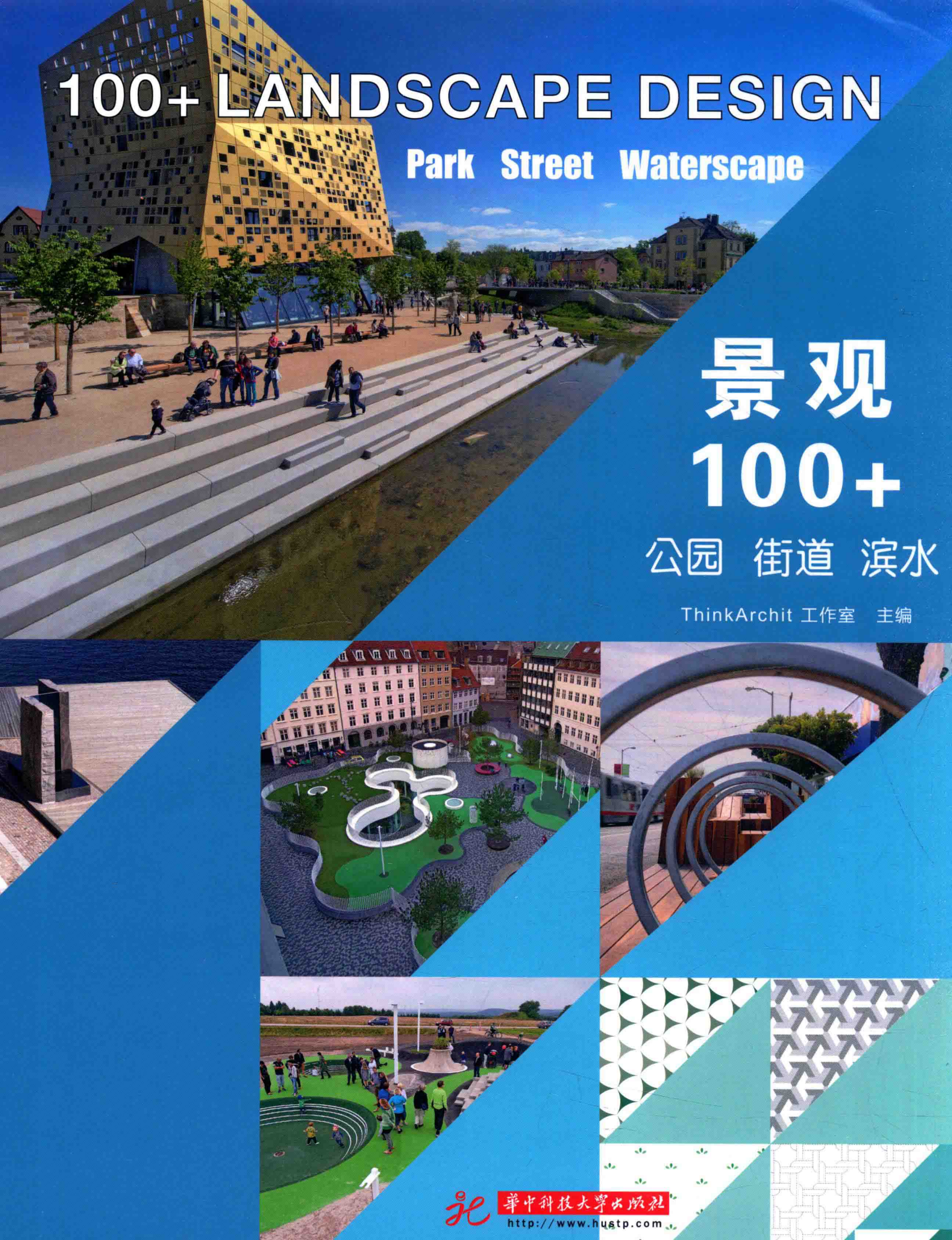
100+ LANDSCAPE DESIGN

Park Street Waterscape

景观 100+

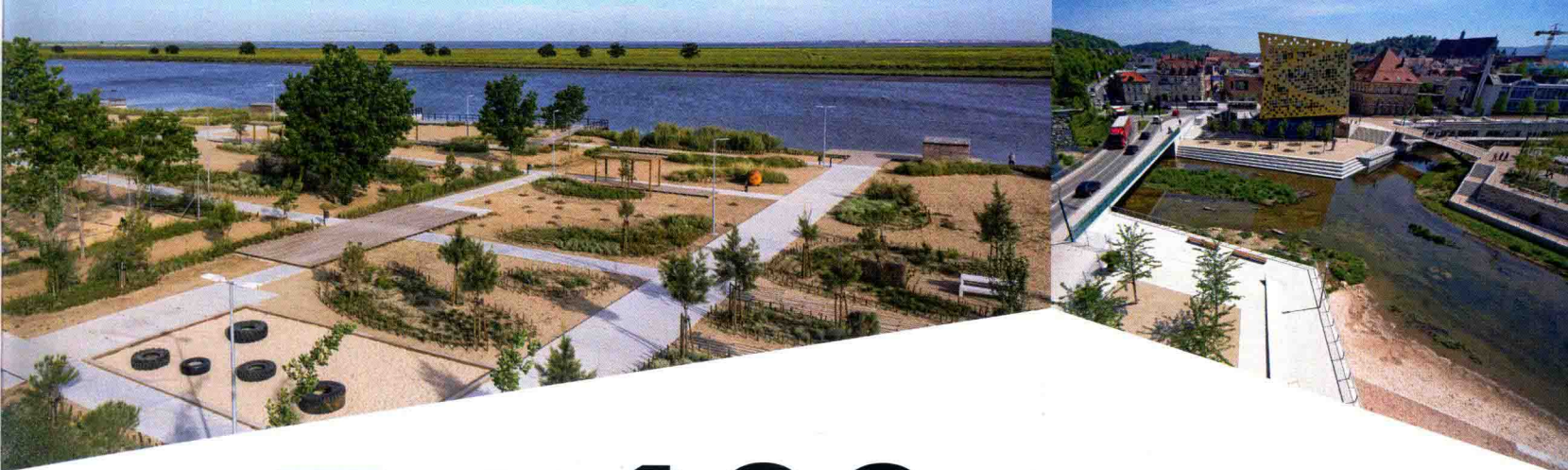
公园 街道 滨水

ThinkArchit 工作室 主编



华中科技大学出版社

<http://www.hustp.com>



景观 100+

LANDSCAPE DESIGN

公园 街道 滨水
PARK STREET WATERSCAPE

ThinkArchit 工作室 主编



华中科技大学出版社
<http://www.hustp.com>

中国·武汉

图书在版编目(CIP)数据

景观100+. 公园 街道 滨水 / ThinkArchit工作室主编. —武汉: 华中科技大学出版社, 2015.10
ISBN 978-7-5680-1186-0

I. ①景… II. ①T… III. ①景观设计—作品集—世界—现代 IV. ①TU986

中国版本图书馆CIP数据核字(2015)第205082号

景观100+ 公园 街道 滨水

ThinkArchit工作室 主编

出版发行: 华中科技大学出版社(中国·武汉)
地 址: 武汉市武昌珞喻路1037号(邮编:430074)
出 版 人: 阮海洪

责任编辑: 杨 睿
责任校对: 徐 茜

责任监印: 秦 英
装帧设计: 张 靖

印 刷: 深圳当纳利印刷有限公司
开 本: 965 mm × 1270 mm 1/16
印 张: 19
字 数: 160千字
版 次: 2015年10月第1版第1次印刷
定 价: 298.00元



投稿热线: (010)64155588-8815
本书若有印装质量问题, 请向出版社营销中心调换
全国免费服务热线: 400-6679-118 竭诚为您服务
版权所有 侵权必究

前言

Preface



本书收录了近年来全球优秀的景观设计案例，除了有大量案例的实景照片外，还配附了规划平面图、剖面图、手绘效果图以及翔实的文字说明等，深层次多角度地展现了设计者的设计理念和手法。编者按照景观功能将设计作品分为商业办公、住宅、教育、公园、广场街道、滨水六类。本书选取的项目既有简洁而精美的现代景观，又有富含深厚文化底蕴的古典式景观；既有恢宏壮观的东南亚式景观，又有那强调简洁、明晰的线条的欧式景观。

景观设计师用细腻的笔触勾勒出一幅幅与自然和谐共生的画面，它是激情和畅想，是隐逸和仁和，更是纯粹和完美。

This book includes the world's excellent landscape design cases of recent years. Apart from a large number of exquisite pictures, there are planning floor plans, section drawings, hand drawings and detailed descriptions in this book, presenting the concepts and design methods of landscape design in a profound way from multi-angles. The editor divides the design works into 6 chapters according to the landscape functions, i.e. Commercial and Official Space, Residence, Education, Park, Square and Street, Waterscape. There are not only concise and exquisite modern landscapes and classic landscapes with profound cultural connotations, but also magnificent south-eastern landscapes and european style landscapes set off by bridges, flowing water, pavilions, terraces and towers.

With fine and smooth brushwork, the landscape designers delineate pictures of human beings coexisting in harmony with nature. It is about passion and imagination, about seclusion, benevolence and harmony. It is more about purity and perfection.





公园 PARK

西沙纳公园 Sishane Park	002
格兰德公园 Grand Park	008
塔霍河带状公园 Tagus Linear Park	016
基勒斯贝格公园 Park Killesberg	024
康瑟尔布拉夫斯滨河公园 Council Bluffs River's Edge Park	032
嘉定中央公园 Jiading Central Park	036
沈阳浑南新区轴线景观规划设计 Main Axis Hunnan	042
西班牙皇室公园 Campa De Los Ingleses Park	048
巴克斯公园 Plaza Euskadi	052
瑞士草药园 Novartis Campus Physic Garden	056
波茨坦友谊岛公园 Freundschaftsinsel	060
康斯坦博西植物园树冠走廊 Kirstenbosch Tree Canopy Walkway	064
帕洛玛医疗中心花园 Palomar Medical Center	070
Strijp S 屋顶花园 Roof Parks Strijp S	076
沙特阿拉伯利雅得的景观 Al-Bujairy	082
使馆区 Diplomatic Quarter	086
美国旧金山拉斐特公园儿童游乐场 Lafayette Park Playground	092
丹麦脉动公园 The Pulse Park	098
阿什姆利公园 Hashomrim Park	106
运动公园 Sport Promenade	112
城市花园 City Botanic Gardens	118
墨尔本运动休闲游乐场 GESAC - Bailey Reserve, Melbourne	126
比利假日公园 Billie Holiday Park	132
新加坡儿童花园 Far East Organization Children's Garden	138
Kavel K 构筑物 Kavel K	144
巴塞罗那的滑板公园 Aureà Cuadrado Park	154
Mar Bella 滑板公园 Mar Bella Park	158
Nou Barris 公园 Park in Nou Barris	162



目录 Contents



广场街道 SQUARE AND STREET

Indautxu 广场 Indautxu Square	168
达姆斯广场景观改造 Redevelopment of Place D'armes	174
Georgswall & Mayor Muller 广场 Georgswall & Mayor Muller Plaza	180
改造后的 Loil 广场 Loil	186
Square Mile 城区 Square Mile	190
戴高乐将军广场和圣瓦斯特广场 General De Gaulle Square and St Vaast Square	194
林地公园 Woodland Park	200
Købmagergade 购物街 Købmagergade	204
帕兴购物中心 Pasing Arcaden	210
新建城市综合体 Hotarumachi	216
Promenada 步行街 Promenada	222
丽城步行街 Belvédère du Chemin-Qui-Marche	232
银行周边街道景观 The Bank Street Parklet Project	238
D 街草坪 The Lawn on D	242
日落街道景观 Sunset Parklet	246
黎巴嫩城市研究 An Urban Study	252
Firnhaberstraße 景观重建 Reconfiguration Firnhaberstraße	258
K 街 1101 号 1101 K Street	262
格尼广场垂直花园 Vertical Garden for Gurney Plaza	266

滨水 WATERSCAPE

施瓦本格明德城市河流改造 Urban Renewal in Schwäbisch Gmünd	270
钻石提格公园 Diamond Teague Park	276
Haute Deûle 河沿岸 —— 新型可持续发展工业区	
Haute Deûle River Banks - New Sustainable District	282
卡尔斯克鲁纳滨水广场 Fisktorget Square	288
海港区 Harbor's End	294



公园

PARK





西沙纳公园

Sishane Park

主要设计师： Murat Şanal, Alexis Şanal

景观设计师： Arzu Nohoğlu

建筑设计师： Begüm Öner, Cibeles Sanchez Lluart,
Orkun Beydagi

设计团队： Merve Akdag Öner, Hazar Arasan,
Leo Pollock, Cristina Aleman Serrano

地点： Turkey (土耳其)

面积： site 5 100 m², bldg. footprint 4 760 m²,
gross floor 3.2 hm²

摄影： olive.com

Located between the southwestern edge of Beyoglu and the highly trafficked Tarlibasi Road, its design intends to re-engage residents and visitors as an alternative public space for people to enjoy the cityscape. The design is in a dialogue with the sweeping views and flora of the Halic (Golden Horn), but also creates large public spaces for cultural program and contrasting intimate spaces for resting, enjoying the tree shade, playing and passing time with the community. The park is defined by three features: the silhouette walk, the decks and the outdoor room.

Materials are selected to offer both familiar and alternative textures to the hardness of the city's surfaces and to invite narratives into the design of the surface to engage people's imagination of the city beyond.

The design team's aim is that Sishane Park becomes a Gateway to Galata and the other districts of Beyoglu as well as a link to the social life. It is envisioned as a place to experience the infamous spontaneous urban life of Galata, for people to have a strong connection to the rich natural environment of the city, while also offering a new formal and informal platform for cultural venues to program and engage the public in public space.

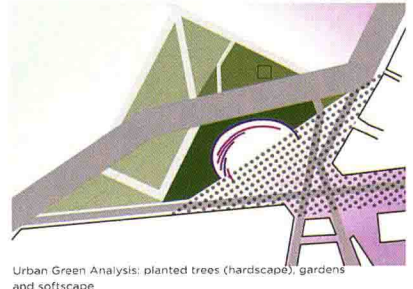
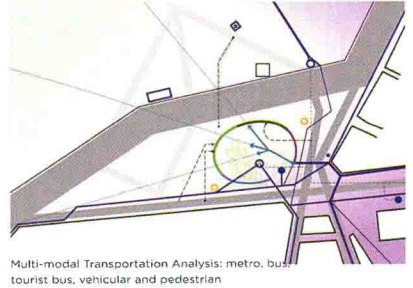
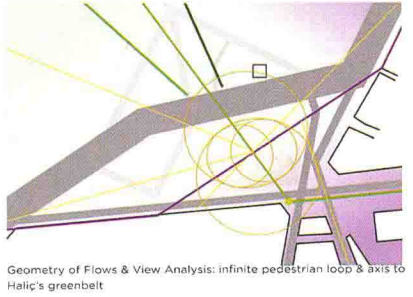
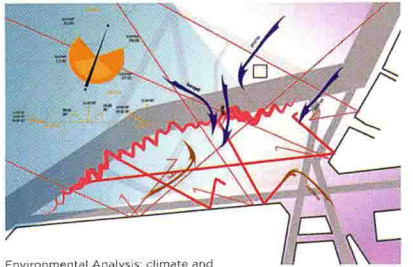
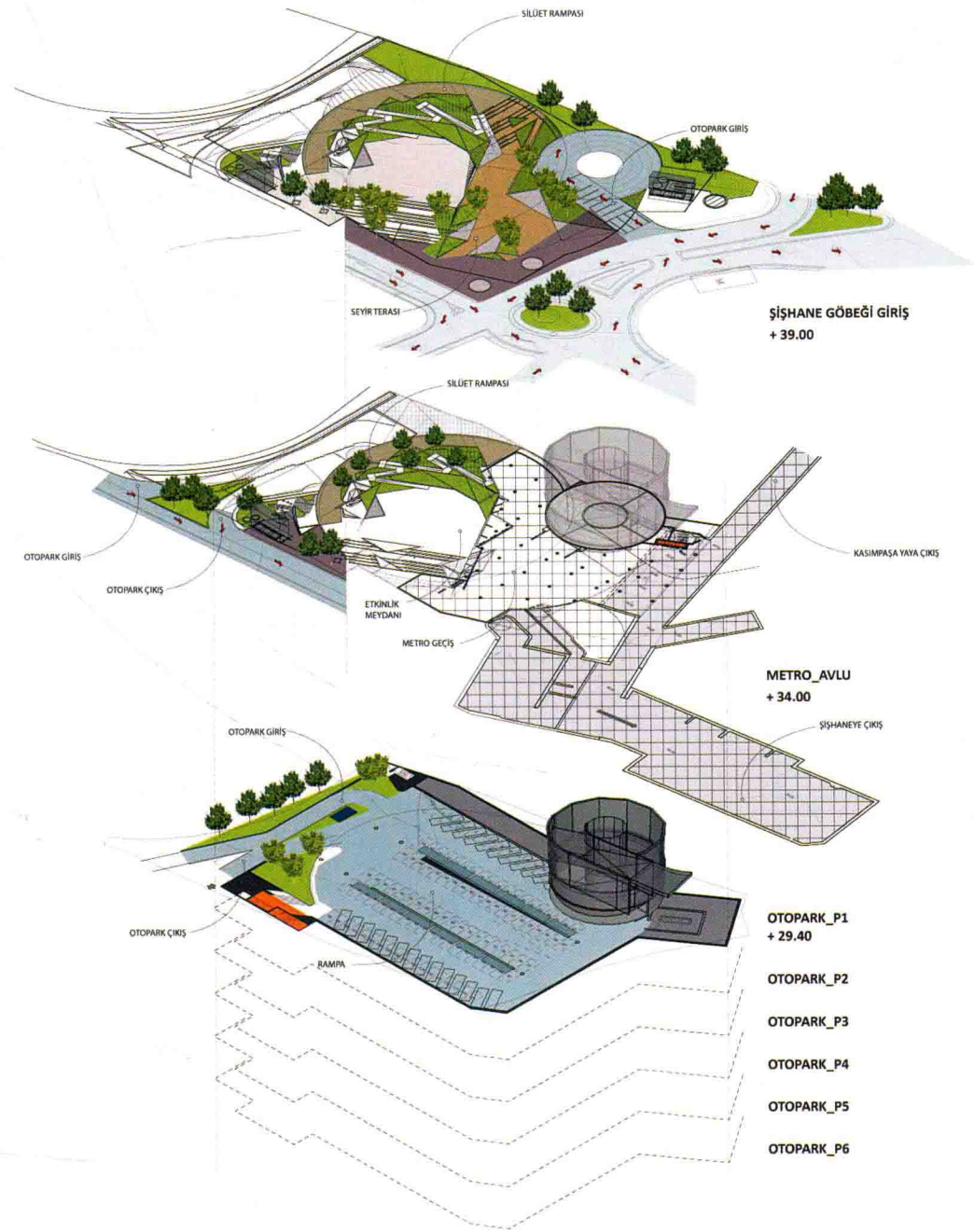
公园位于 Beyoglu 区西南部与车水马龙的 Tarlibasi 路之间，其设计目的在于吸引居民和游客到城市自然环境中，并将其打造成适合人们在城市集聚的公共空间。设计利用了金角湾的景色，同时也创造了进行文化表演的



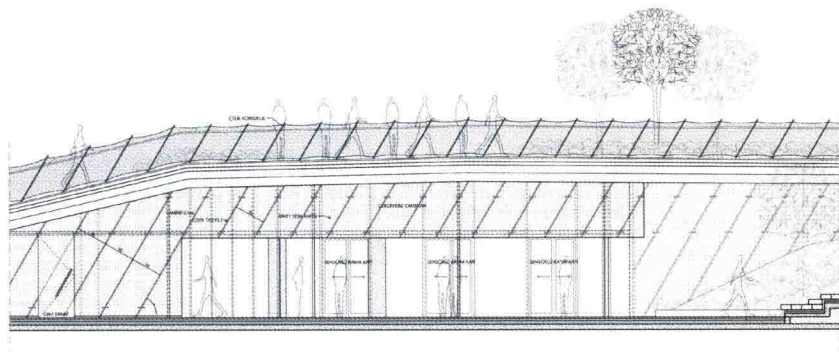
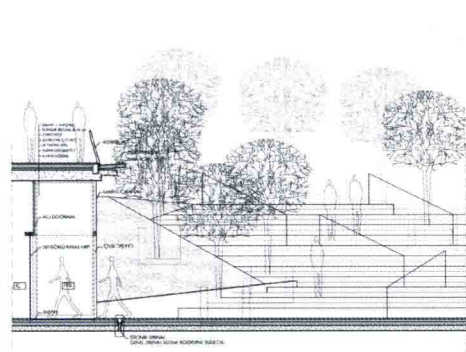
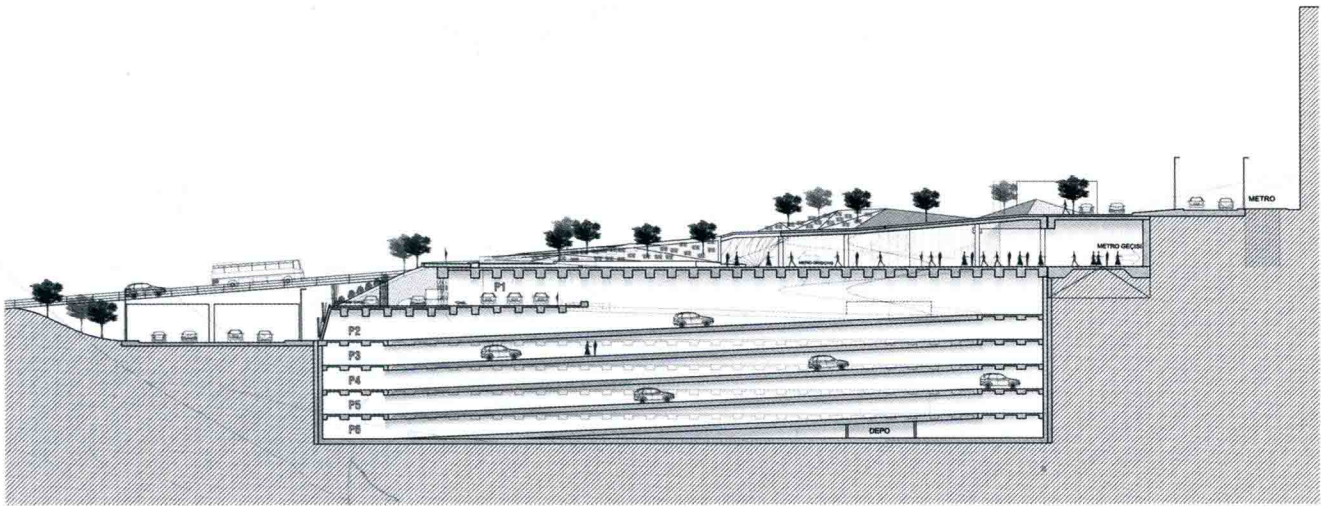
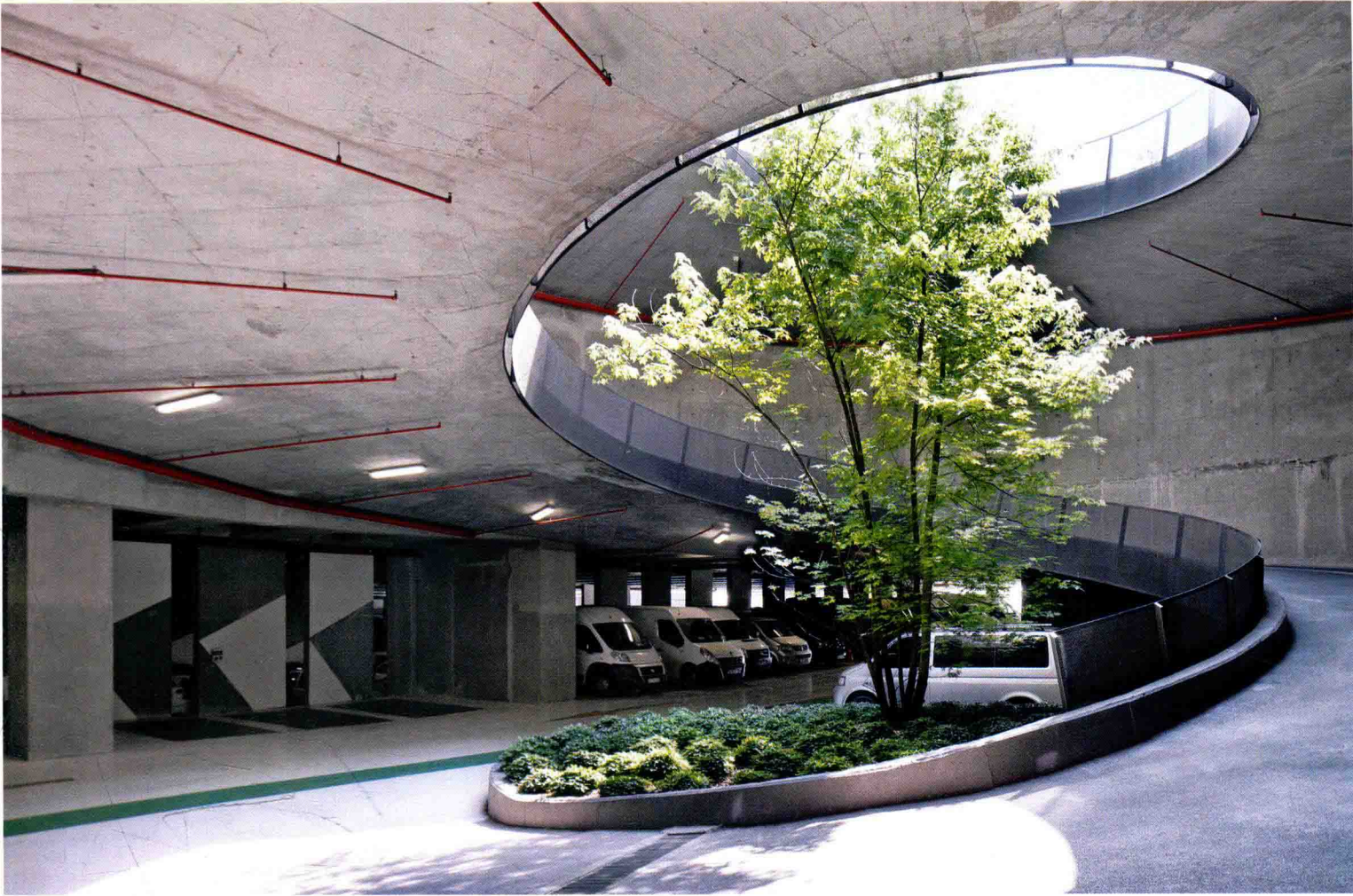


大型公共空间和相对保密的休息空间，人们可以在此享受绿树成荫，更可与友邻共度欢乐的时光。西沙纳公园有三处重点特色：轮廓曲折的小径、露台和户外空间。在建筑材料的选择上，常规材料与体现城市硬朗表面的材质相互呼应，使建筑表面的设计富有叙事性，引发人们对于这个城市的无限遐思。

设计团队的目标是将西沙纳公园打造成为通往 Galata 和 Beyoglu 地区的门户空间，并成为连接人们与社会、生活的纽带。它为人们提供了一个体验城市生活的机会。它将现代城市和自然环境融合到一起，提供了一个新的正式和非正式的文化场所，使人们在城市的空间中享受大自然的美好。









格兰德公园

Grand Park

设计公司：Rios Clementi Hale Studios

设计团队：Mark Rios, Julie Smith-Clementi, Frank Clementi, Bob Hale, Tony Paradowski, Greg Kochanowski, Jessa Chisari, John Fishback, Alissa Hisoire, Samantha Harris, Clancy Pearson, Brooke Woosley, Ryan Vasquez, Chris Adamick, Allen Compton, Garth Dahlgren, Ananda Kantner, Therese Kelly

地点：USA (美国)

面积：4.86 hm²

摄影：Tom Bonner, Jim Simmons

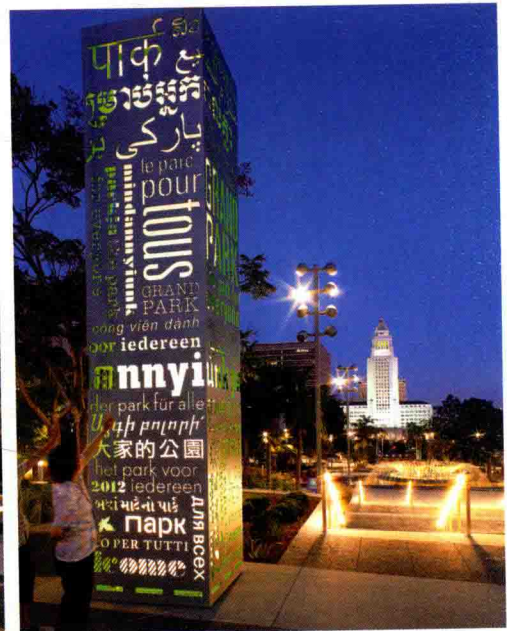
Grand Park's landscape architecture and architecture are designed by Rios Clementi Hale Studios who creates a distinctive, interconnected, and inviting space.

It is a public garden that reclaims a key urban site to celebrate the Los Angeles County of yesterday, today, and tomorrow. Grand Park is a distinctive space designed to “feel” like Los Angeles, with its lush and diverse vegetation echoing the region's numerous backyard gardens, as well as open lawns, gardens, bright-magenta furniture, and shady spaces to see and be seen.

Different activities occur in Grand Park's four public spaces, or “blocks”. In Blocks One and Two, visitors will find the Fountain Plaza with the regal, restored Arthur J. Will Memorial Fountain and interactive water features (by Fluidity Design Consultants); new buildings, which house the park office and public restrooms; Olive Court, a plaza that marks the historic alignment of Olive Street with olive trees and Mediterranean plantings, as well as historic speaker poles and benches; and the Performance Lawn with broad expanses of grass and a small stage. This shady lawn area incorporates several existing Jacaranda trees and is surrounded by various gardens containing plants from North America, Australia, and Southeast Asia.

In Blocks Three and Four, visitors will find the Community Terrace, a large central plaza surrounded by gardens from each of the world's six Floristic Kingdoms; small lawn areas for picnics and lounging; a Flag Garden; the







Broadway Terraces, providing ADA access down to the street level, as well as informal stepped-seating areas; the Event Lawn, an open, flexible area for large public gatherings and marketplace; and even a dog run.

格兰德公园的景观设计由 Rios Clementi Hale Studios 负责，工作室创建了一个独特的、相互关联的、引人入胜的空间。

格兰德公园是一个公共的花园、醒目的城市景观，它的建立是为了纪念洛杉矶城的昨天、今天和明天。格兰德公园是一个旨在让人们有“置身在洛杉矶的感觉”的独特空间。这里有种类多样的植被和与此形成呼应的庭院，以及开放式的草坪、花园、明亮的桃红色的街具和绿树成荫的广场。

格兰德公园有四个街区，每个街区有不同的活动。第一、第二街区，有喷泉广场和翻修的亚瑟·J. 威尔纪念喷泉和循环流水设施（由流水设计顾问设计）。新建筑容纳了公园办公室和公共厕所。它被称为橄榄苑的广场，体现了种植着橄榄树和地中海植物的橄榄街的历史。广场上有历史悠久的带扬声器的电线杆和长椅，以及一大片草坪和一个小舞台。草坪区上种植的蓝花楹树在周围各种花卉的簇拥下茁壮生长。

第三、第四街区，有游人们经常参观的露台、一个被小花园包围的大型中央广场、一个可以野餐和闲逛的小草坪、一个国旗园、一个百老汇梯田（提供 ADA 通道连接到下一级街道），以及一个非正式的阶梯式的休息区。草坪是一个开放的、灵活的空间，常有大型公众集会在这里举行，小动物们也喜欢在这里玩耍。