

SECOND EDITION  
SPINAL CORD  
MEDICINE

# 脊髓医学 第2版

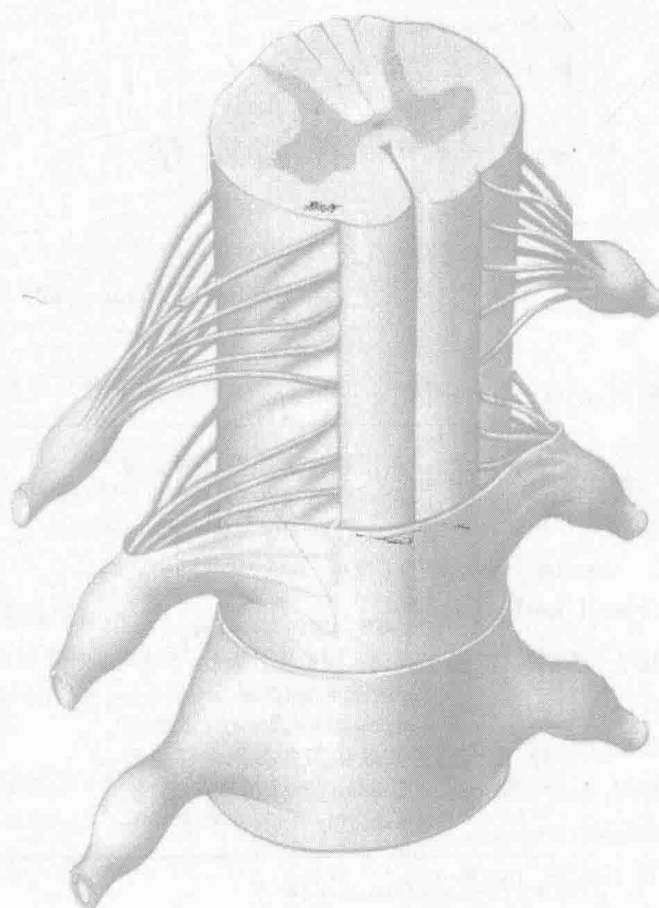
主 编 [美] Steven Kirshblum  
[美] Denise I. Campagnolo  
名誉主译 乔杰  
主 译 周谋望 陈仲强 刘楠 周方



SECOND EDITION  
SPINAL CORD  
MEDICINE

# 脊髓医学 第2版

主 编 [美] Steven Kirshblum  
[美] Denise I. Campagnolo  
名誉主译 乔杰  
主 译 周谋望 陈仲强 刘楠 周方



Wolters Kluwer

Health

Philadelphia • Baltimore • New York • London  
Buenos Aires • Hong Kong • Sydney • Tokyo

山东科学技术出版社

图书在版编目 (CIP) 数据

脊髓医学/[美]克什布鲁姆,[美]坎帕尼奥洛编著;  
周谋望等译.—2 版.—济南:山东科学技术出版社,  
2015

ISBN 978-7-5331-7900-7

I. ①脊… II. ①克… ②坎… ③周… III. ①脊髓  
疾病—诊疗 IV. ①R744

中国版本图书馆 CIP 数据核字(2015)第 179823 号

## 脊 髓 医 学

(第 2 版)

主 编 [美] Steven Kirshblum

[美] Denise I. Campagnolo

名誉主译 乔杰

主 译 周谋望 陈仲强 刘楠 周方

---

主管单位:山东出版传媒股份有限公司

出 版 者:山东科学技术出版社

地址:济南市玉函路 16 号

邮编:250002 电话:(0531)82098088

网址:www.lkj.com.cn

电子邮件:sdkj@sdpres.com.cn

发 行 者:山东科学技术出版社

地址:济南市玉函路 16 号

邮编:250002 电话:(0531)82098071

印 刷 者:山东新华印务有限责任公司

地址:济南市世纪大道 2366 号

邮编:250104 电话:(0531)82079112

---

开本:889mm×1194mm 1/16

印张:49

字数:1241 千

版次:2015 年 9 月第 1 版 2015 年 9 月第 1 次印刷

---

ISBN 978-7-5331-7900-7

定价:360.00 元

# 主 编

## **Steven Kirshblum, MD**

Professor

Department of Physical Medicine  
and Rehabilitation

University of Medicine and

Dentistry-New Jersey Medical School  
Newark, New Jersey

Medical Director

Director of Spinal Cord Injury Services

Kessler Institute for Rehabilitation

West Orange, New Jersey

## **Denise I. Campagnolo, MD**

Clinical Professor of Neurology

University of Arizona College  
of Medicine-Phoenix

Phoenix, Arizona

Clinical Faculty/Adjunct

Center for Adaptive Neural Systems

Arizona State University

Tempe, Arizona

### ***Prior to January 2010***

Director of Multiple Sclerosis Program

Barrow Neurology Clinics

St. Joseph's Hospital and Medical Center

Phoenix, Arizona

### ***After January 2010***

Associate Medical Director

US Medical Affairs

Biogen Idec

Weston, Massachusetts

# 篇章主编

## **Peter Gorman, MD**

Associate Professor and Division Head

Division of Rehabilitation Medicine

Department of Neurology, University of Maryland  
School of Medicine

Chief, Division of Rehabilitation

MedicineDirector, Spinal Cord Injury  
Service, Kernan Orthopaedics and  
Rehabilitation Hospital

Attending Physician, PM&R Service

VA Maryland Healthcare System

Baltimore, Maryland

## **Robert F. Heary, MD**

Professor

Neurological Surgery

University of Medicine and Dentistry-New Jersey  
Medical School

Newark, New Jersey

## **Mark S. Nash, PhD, FACS**

Professor

Department of Neurological Surgery and  
Rehabilitation Medicine

Principal Investigator

The Miami Project to Cure Paralysis Director of  
Research

Department of Rehabilitation Medicine

University of Miami Miller School of Medicine

Lois Pope Life Center

Miami, Florida

# 编者

## **Nduka Amankulor, MD**

Department of Neurosurgery  
Yale University School of Medicine  
New Haven, Connecticut

## **Kimberly D. Anderson, PhD**

Director of Education  
The Miami Project to Cure Paralysis  
The University of Miami  
Miller School of Medicine  
Miami, Florida

## **Alan S. Anshel, MD**

Clinical Instructor of Physical Medicine and Rehabilitation

Northwestern University  
Feinberg School of Medicine  
Attending Physician  
Spinal Cord Injury Program  
Rehabilitation Institute of Chicago  
Chicago, Illinois

## **Jacqueline Bello, MD**

Professor  
Department of Radiology  
Montefiore Medical Center  
Director, Division of Neuroradiology  
Department of Radiology  
Albert Einstein College of Medicine  
Bronx, New York

## **Michael H. Berrly, MD**

Past Chair  
Department of Physical Medicine and Rehabilitation  
Santa Clara Valley Medical Center  
San Jose, California

## **Randal R. Betz, MD**

Professor of Orthopaedic Surgery  
Temple University  
Chief of Staff  
Shriners Hospital for Children  
Philadelphia, Pennsylvania

## **Jessica Bloomgarden, MD**

Instructor  
Rehabilitation Medicine  
Mount Sinai Medical Center  
New York, New York

## **William L. Bockenek, MD**

Chairman  
Department of Physical Medicine and Rehabilitation  
Carolinas Medical Center  
Medical Director  
Department of Physical Medicine and Rehabilitation  
Carolinas Rehabilitation  
Charlotte, North Carolina

## **Amy Bohn, OTR/L**

The Hand & Upper Extremity Center of Georgia  
Shepherd Center  
Sovereign Therapy  
Atlanta, Georgia  
Department of Orthopaedic Surgery  
Cleveland MetroHealth Medical Center  
Cleveland, Ohio

## **Michael Bonninger, MD**

Professor and Chair  
Department of Physical Medicine and Rehabilitation  
Associate Dean of Medical Student Research  
University of Pittsburgh  
Pittsburgh, Pennsylvania

## **Nancy L. Brackett, PhD, HCLD**

Associate Professor of Neurological Surgery and Urology  
The Miami Project to Cure Paralysis  
University of Miami  
Miller School of Medicine  
Miami, Florida

## **Monifa Brooks, MD**

Spinal Cord Injury  
Kessler Institute for Rehabilitation  
Clinical Instructor  
University of Medicine and Dentistry  
New Jersey – New Jersey Medical School  
Newark, New Jersey

**Anne M. Bryden, OTR/L**

The Hand & Upper Extremity Center of Georgia  
Shepherd Center  
Sovereign Therapy  
Atlanta, Georgia  
Department of Orthopaedic Surgery  
Cleveland MetroHealth Medical Center  
Cleveland, Ohio

**Anthony S. Burns, MD, MSc**

Associate Professor  
Division of Psychiatry  
Department of Medicine  
University of Toronto  
Medical Director  
Spinal Cord Rehabilitation Program  
Toronto Rehabilitation Institute  
Toronto, Ontario, Canada

**Denise I. Campagnolo, MD**

Clinical Professor of Neurology  
University of Arizona College of Medicine – Phoenix  
Phoenix, Arizona  
Clinical Faculty/Adjunct  
Center for Adaptive Neural Systems  
Arizona State University  
Tempe, Arizona

***Prior to January 2010***

Director of Multiple Sclerosis Program  
Barrow Neurology Clinics  
St. Joseph's Hospital and Medical Center  
Phoenix, Arizona

***After January 2010***

Associate Medical Director  
US Medical Affairs  
Biogen Idec  
Weston, Massachusetts

**Gregory T. Carter, MD, MS**

Medical Director  
Muscular Dystrophy Association  
Regional Neuromuscular Center  
Providence St. Peter Medical Center  
Olympia, Washington

**Susan Charlifue, PhD**

Principal Investigator  
Department of Research  
Craig Hospital  
Englewood, Colorado

**David Chen, MD**

Medical Director  
Spinal Cord Injury Acute Care and Rehabilitation  
Northwestern Memorial Hospital/Rehabilitation Institute of Chicago  
Associate Professor of Physical Medicine and Rehabilitation  
Northwestern University  
Feinberg School of Medicine  
Chicago, Illinois

**Yuying Chen, MD, PhD**

Associate Professor  
Department of Physical Medicine and Rehabilitation  
University of Alabama at Birmingham  
Birmingham, Alabama

**Rachel E. Cowan, PhD**

Department of Neurological Surgery and the Miami Project to Cure Paralysis  
Miller School of Medicine  
University of Miami  
Miami, Florida

**Graham Creasey, MD**

Professor  
Department of Neurosurgery  
Stanford University  
VA Palo Alto Health Care System  
Palo Alto, California

**Armin Curt, MD, FRCPC**

Spinal Cord Injury Center  
University of Zurich  
Professor and Chairman  
University Hospital Balgrist  
Zurich, Switzerland

**Michael J. DeVivo, PhD**

Professor  
Department of Physical Medicine and Rehabilitation  
University of Alabama at Birmingham  
Birmingham, Alabama

**Joel A. DeLisa, MD, MS**

Professor and Chairman  
 Department of Physical Medicine and Rehabilitation  
 University of Medicine and Dentistry – New Jersey  
 Medical School  
 Newark, New Jersey

**Brad E. Dicianno**

Assistant Professor  
 Department of Physical Medicine and Rehabilitation  
 University of Pittsburgh  
 Medical Director  
 Center for Assistive Technology  
 University of Pittsburgh Medical Center  
 Pittsburgh, Pennsylvania

**Anthony F. DiMarco, PhD**

Professor  
 Department of Physical Medicine and Rehabilitation,  
 Physiology and Biophysics  
 Case Western Reserve University  
 MetroHealth Medical Center  
 Bioscientific Department  
 Cleveland, Ohio  
 Chief, Department of Medicine  
 University Hospitals Geauga Medical Center  
 Chardon, Ohio

**William Donovan, MD**

Professor, Chair Emeritus  
 Department of Physical Medicine and Rehabilitation  
 University of Texas Medical School  
 Past President, International Spinal Cord Society  
 and American Spinal Injury Association  
 Co-Director, Texas SCI Model System Model System  
 Houston, Texas

**Trevor A. Dyson – Hudson, MD**

Interim Director  
 Spinal Cord Injury Research and Outcomes &  
 Assessment  
 Research Kessler Foundation Research Center  
 Assistant Professor  
 Department of Physical Medicine and Rehabilitation  
 University of Medicine and Dentistry – New Jersey  
 Medical School  
 Newark, New Jersey

**Joaquim Farinhas, MD**

Assistant Professor  
 Department of Radiology  
 Montefiore Medical Center  
 Department of Neuroradiology  
 Albert Einstein College of Medicine  
 Bronx, New York

**Debra J. Farrell, PhD, OTR, CAAC, CRC**

Department of Physical Medicine and Rehabilitation  
 University of Michigan Health System  
 Ann Arbor, Michigan

**Joyce Fichtenbaum, PhD**

Clinical Assistant Professor  
 Department of Physical Medicine and Rehabilitation  
 University of Medicine and Dentistry-New Jersey  
 Medical School  
 Newark, New Jersey  
 Staff Psychologist  
 Department of Psychology and Neuropsychology  
 Kessler Institute for Rehabilitation  
 West Orange, New Jersey

**Rebecca E. Fisher, MD**

Department of Basic Medical Sciences  
 University of Arizona College of Medicine-Phoenix,  
 in Partnership with Arizona State University  
 Phoenix, Arizona

**Adam E. Flanders, MD**

Department of Radiology  
 Thomas Jefferson University  
 Philadelphia, Pennsylvania

**Heather M. Flett, MSc, BScPT**

Lecturer  
 Department of Physical Therapy  
 University of Toronto  
 Advanced Practice Leader  
 Spinal Cord Rehabilitation Program  
 Toronto Rehabilitation Institute  
 Toronto, Ontario, Canada

**Gail Forrest, PhD**

Assistant Professor  
Department of Physical Medicine and Rehabilitation  
University of Medicine and Dentistry of  
New Jersey-New Jersey Medical School  
Newark, New Jersey  
Interim Director  
Human Performance and Movement Analysis  
Laboratory  
Kessler Foundation Research Center  
West Orange, New Jersey

**Nikki Fox, DO**

Department of Physical Medicine and Rehabilitation  
Wayne State University School of Medicine  
Detroit, Michigan

**Frederick Frost, MD**

Associate Professor of Medicine  
Department of Physical Medicine and Rehabilitation  
Cleveland Clinic Lerner College of Medicine  
Cleveland, Ohio

**Susan V. Garstang, MD, BS**

Clinical Assistant Professor  
Residency Program Director  
Department of Physical Medicine &  
Rehabilitation  
University of Medicine and Dentistry-New Jersey  
Medical School  
Newark, New Jersey  
Staff Physiatrist  
VA New Jersey Healthcare System  
East Orange, New Jersey

**David R. Gater Jr, MD, PhD**

Chief, Spinal Cord Injury and Disorders  
Department of VA  
Hunter Holmes McGuire Medical Center  
Spinal Cord Injury and Disorders Service  
Richmond, Virginia

**Zoher Ghogawala, MD, FACS**

Clinical Assistant Professor  
Department of Neurosurgery  
Yale University School of Medicine  
Director  
Wallace Clinical Trials Center  
New Haven, Connecticut

**Barry Goldstein, MD**

Professor  
Department of Rehabilitation Medicine  
University of Washington  
Attending Physician  
Department of Rehabilitation Medicine  
Harborview Medical Center  
Associate Chief Consultant  
Spinal Cord Injury/Disorders Services  
VACO Office of Patient Care Services  
Department of VA  
Seattle, Washington

**Eduardo Gonzalez – Hernandez, MD**

Miami Hand Center  
Miami, Florida

**Peter Gorman, MD**

Associate Professor and Division Head  
Division of Rehabilitation Medicine  
Department of Neurology, University of Maryland  
School of Medicine  
Chief, Division of Rehabilitation Medicine  
Director, Spinal Cord Injury Service, Kernan Orthopaedics and Rehabilitation Hospital  
Attending Physician, PM&R Service  
VA Maryland Healthcare System  
Baltimore, Maryland

**Edwin Gulko, MD**

Clinical Instructor, Radiology  
Montefiore Medical Center  
Department of Radiology  
Albert Einstein College of Medicine  
Bronx, New York

**Margaret C. Hammond, MD**

Physician  
Department of Rehabilitation  
VA Puget Sound Health Care System  
Seattle, Washington

**Amanda L. Harrington, MD**

Department of Physical Medicine and Rehabilitation  
Case Western Reserve University  
MetroHealth Rehabilitation Institute of Ohio  
Cleveland, Ohio

**Robert F. Heary, MD**

Professor  
Neurological Surgery  
University of Medicine and Dentistry-New Jersey  
Medical School  
Newark, New Jersey

**John A. Horton, MD**

Department of Physical Medicine and Rehabilitation  
University of Pittsburgh  
Pittsburgh, Pennsylvania

**Amitabh Jha, MD, MPH**

Associate Professor  
Department of Physical Medicine and Rehabilitation  
University of Colorado at Denver  
Research Physiatrist  
Craig Hospital  
Englewood, Colorado

**Nanette C. Joyce, DO**

Staff Physician  
Department of Physical Medicine and Rehabilitation  
University of California, Davis  
Sacramento, California

**Stephen S. Kamin, MD**

Associate Professor and Acting Chair  
Department of Neurology and Neurosciences  
University of Medicine and Dentistry-New Jersey  
Medical School  
Chief of Service  
Department of Neurology  
University Hospital  
Newark, New Jersey  
Attending Neurologist  
Multiple Sclerosis Center at Holy Name  
Holy Name Hospital  
Teaneck, New Jersey

**Michael W. Keith, MD**

The Hand & Upper Extremity Center of Georgia  
Shepherd Center  
Sovereign Therapy  
Atlanta, Georgia  
Department of Orthopaedic Surgery  
Cleveland MetroHealth Medical Center  
Cleveland, Ohio

**Kevin Kilgore, PhD**

Adjunct Assistant Professor of Biomedical Engineering  
Case Western Reserve University  
MetroHealth Medical Center  
Cleveland, Ohio

**Steven Kirshblum, MD**

Professor  
Department of Physical Medicine and Rehabilitation  
University of Medicine and Dentistry-New Jersey  
Medical School  
Newark, New Jersey  
Medical Director  
Director of Spinal Cord Injury Services  
Kessler Institute for Rehabilitation  
West Orange, New Jersey

**Rudi Kobetic, MS**

Biomedical Engineer  
Department of Research  
Louis Stokes VA Medical Center  
Cleveland, Ohio

**John Kramer MSc, PhD (candidate)**

International Collaboration on Repair Discoveries  
(ICORD) University of British Columbia  
Vancouver, British Columbia, Canada

**Andrei Krassioukov, MD, PhD, FRCPC**

Professor  
Division of Physical Medicine and Rehabilitation  
Scientist, ICORD  
Director of Autonomic Research Unit  
Staff physician  
Spinal Cord Program  
GE Strong Rehabilitation Centre  
Department of Medicine  
University of British Columbia  
Adjunct Professor  
Department of Physical Medicine and Rehabilitation  
University of Western Ontario  
London, Ontario, Canada

**James S. Krause, PhD**

Associate Dean of Research  
Department of Health Sciences and Research  
Medical University of South Carolina  
Charleston, South Carolina

**Ilya Kupershtein, MD**

Resident  
Department of Orthopaedics  
University of Medicine and Dentistry of New Jersey  
New Jersey Medical School  
Newark, New Jersey

**Todd A. Linsenmeyer, MD**

Associate Professor  
Department of Physical Medicine and Rehabilitation  
University of Medicine and Dentistry of New Jersey  
New Jersey Medical School  
Newark, New Jersey  
Director of Urology  
Kessler Institute for Rehabilitation  
West Orange, New Jersey

**Betty Y. Liu, MD**

Assistant Professor  
Center for Assistive Technology  
Department of Physical Medicine and Rehabilitation  
University of Pittsburgh Medical Center  
Department of Rehabilitation Science and Technology  
University of Pittsburgh  
The Human Engineering Research Laboratories

**Charles M. Lynne, MD**

Department of Urology  
University of Miami Miller School of Medicine  
Miami, Florida

**Laurie A. Malone, PhD**

Lakeshore Foundation  
Birmingham, Alabama

**Ralph J. Marino, MD, MS**

Professor  
Department of Rehabilitation Medicine  
Jefferson Medical College of Thomas Jefferson  
University  
Director  
Regional Spinal Cord Injury Center of the Delaware  
Valley  
Thomas Jefferson University Hospital  
Philadelphia, Pennsylvania

**Isa McClure, MAPT**

Clinical Specialist  
Spinal Cord Injury  
Kessler Institute for Rehabilitation  
West Orange, New Jersey

**Steven Mckenna, MD**

Department of Physical Medicine and Rehabilitation  
Santa Clara Valley Medical Center  
Clinical Instructor (Affiliated)  
Department of Medicine  
Stanford University School of Medicine  
Stanford, California

**Michelle A. Meade, PhD**

Assistant Professor  
Department of Physical Medicine and Rehabilitation  
University of Michigan  
Chief Psychologist, Spinal Cord Injury Service  
Department of Physical Medicine and Rehabilitation  
University of Michigan Health System  
Ann Arbor, Michigan

**Jay Meythaler, MD, JD**

Chairman and Professor  
Department of Physical Medicine and Rehabilitation  
Wayne State University  
Dearborn, Michigan

**Jane Mitchell, BSN, RN, CRRN CCM**

Nurse Case Manager  
Kessler Institute for Rehabilitation  
West Orange, New Jersey

**Mary Jane Mulcahey, MS, OTR/L**

Director  
Clinical and Outcomes Research  
Shriners Hospitals for Children Philadelphia, Penn-  
sylvania Research  
Associate Professor  
College of Health Professions  
Department of Occupational Therapy  
Thomas Jefferson University  
Philadelphia, Pennsylvania

**C. Raffi Najarian, MD, MPH**

Department of Physical Medicine and Rehabilitation  
MetroHealth Physical Rehabilitation Institute of Ohio  
Cleveland, Ohio

**Mark S. Nash, PhD, FACSM**

Professor

Department of Neurological Surgery and Rehabilitation Medicine

Principal Investigator

The Miami Project to Cure Paralysis Director of Research

Department of Rehabilitation Medicine

University of Miami Miller School of Medicine

Lois Pope Life Center

Miami, Florida

**Cindy Nead, COTA**

Spinal Cord Injury Program

Kessler Institute for Rehabilitation

West Orange, New Jersey

**Greg Nemunaitis, MD**

Professor

Department of Physical Medicine and Rehabilitation

Case Western Reserve University School of Medicine

MetroHealth Rehabilitation Institute of Ohio

Department of Physical Medicine and Rehabilitation

Cleveland, Ohio

**Kevin O' Connor, MD**

Assistant Professor, Residency Training Director

Department of PM&amp;R

Harvard Medical School Medical Director

Spinal Cord Injury Associate Medical Director

Inpatient Operations Spaulding Rehabilitation Hospital

Boston, Massachusetts

**Dana A. Ohl, MD**

Professor of Urology

Head, Division of Andrology and Microsurgery

Department of Urology

University of Michigan

Ann Arbor, Michigan

**Ajit Pai, MD**

Assistant Professor

Department of Physical Medicine and Rehabilitation

Virginia Commonwealth University

Medical Director

Polytrauma Rehabilitation Center

Physical Medicine and Rehabilitation Service

Hunter Holmes McGuire VA Medical Center

Richmond, Virginia

**Allan E. Peljovich, MD, MPH**

Instructor

Atlanta Medical Center

Active Staff

The Shepherd Center

Atlanta, Georgia

**Conchita Q. Rader, RN, MA, CFCN, CWCN**

Wound Care Coordinator

Department of Nursing

Kessler Institute for Rehabilitation

West Orange, New Jersey

**Robert L. Ruff, MD, PhD**

Professor

Department of Neurology and Neuroscience

Case Western Reserve University

Chief

Neurology Service

Cleveland VA Medical Center

Cleveland, Ohio

**Hreday N. Sapru, PhD**

Professor

Department of Neurological Surgery

University of Medicine and Dentistry-New Jersey

Medical School

Newark, New Jersey

**William M. Scelza, MD**

Director, Spinal Cord Injury Program

Carolinas Rehabilitation

Charlotte, North Carolina

**Mark Schmeler, PhD, OTR/L, ATP**

Assistant Professor  
Department of Rehabilitation Science and Technology  
University of Pittsburgh School of Health  
and Rehabilitation Sciences  
Pittsburgh, Pennsylvania

**Stephen M. Selkirk, MD, PhD**

Spinal Cord Medicine Service  
Neurology Service  
Louis Stokes Cleveland Department of  
VA Medical Center  
Department of Neurology and Neurological Institute  
University Hospitals of Cleveland and Case Western  
Reserve University  
Cleveland, Ohio

**Akshat Shah, MD**

Chief, Spinal Cord and Orthopedic Rehabilitation  
Department of Physical Medicine and Rehabilitation  
Santa Clara Valley Medical Center  
Assistant Clinical Professor (Affiliated)  
Department of Orthopaedics  
Stanford University School of Medicine  
Stanford, California

**Kazuko Shem, MD**

Associate Chief  
Department of Physical Medicine and Rehabilitation  
Santa Clara Valley Medical Center  
Assistant Clinical Professor (Affiliated)  
Department of Orthopaedics  
Stanford University School of Medicine  
Stanford, California

**Heather F. Smith, MD**

Department of Basic Medical Sciences  
University of Arizona College of Medicine-Phoenix,  
in Partnership with Arizona State University  
Phoenix, Arizona

**Jens Sønksen, MD, DMSci, PhD**

Professor  
University of Copenhagen  
Copenhagen, Denmark  
Chief Physician  
Department of Urology  
Herlev Hospital  
Herlev, Denmark

**Abhishek Srinivas, MD**

Clinical Instructor  
Radiology  
Montefiore Medical Center  
Department of Radiology  
Albert Einstein College of Medicine  
Bronx, New York

**Ronald J. Triolo, MD**

Associate Professor  
Department of Orthopaedics and Biomedical  
Engineering  
Case Western Reserve University  
Senior Career Research Scientist  
Department of Rehabilitation Research  
and Development Service  
Louis Stokes Cleveland VA Medical Center  
Cleveland, Ohio

**Michael Vives, MD**

Associate Professor  
Department of Orthopaedics  
University of Medicine and Dentistry-New Jersey  
Medical School  
Newark, New Jersey

**Lawrence C. Vogel, MD**

Professor  
Department of Pediatrics  
Rush Medical College  
Assistant Chief of Staff, Medicine  
Shriners Hospitals for Children  
Chicago, Illinois

**Timothy L. Vollmer, MD**

Professor of Neurology  
Medical Director – Rocky Mountain MS Center  
Co – Director  
Rocky Mountain MS Clinic Anschutz Medical Center  
University of Colorado Denver  
Aurora, Colorado

**Heather Walker, MD**

Assistant Professor  
Department of Physical Medicine and Rehabilitation  
The University of North Carolina at Chapel Hill  
Chapel Hill, North Carolina

**Eva Widerström-Noga, DDS, PhD**

Research Associate Professor  
Neurological Surgery  
Rehabilitation Medicine and Neuroscience Program  
The Miami Project to Cure Paralysis Director of Research  
Department of Rehabilitation Medicine  
University of Miami Miller School of Medicine  
Lois Pope Life Center  
Miami, Florida

**Alexandros D. Zouzas, MD**

Department of Neurological Surgery  
University of Medicine and Dentistry-New Jersey  
Medical School  
Newark, New Jersey

名誉主译 乔 杰

主 译 周谋望 陈仲强 刘 楠 周 方

副主译 杨延砚 李筱雯

译 者 (以姓氏笔画为序)

丁 千	王剑雄	丛 卉	乔 杰	邢华医	邢 剑
刘京宇	刘 楠	杨延砚	李 涛	李筱雯	谷 莉
张 娜	张 娟	陈仲强	周 方	周谋望	胡志伟

## 献 词

谨以此书献给我们曾经的住院医师 Lisa S. Krivickas, 她是运动神经元病章节的编者之一, 因肌萎缩侧索硬化 (ALS) 逝于 2009 年 9 月 22 日。我们所有编者将这本书献给 Lisa, 以纪念她为神经肌肉疾病 (包括 ALS) 患者所做出的贡献, 歌颂她作为卓越临床研究者的职业生涯。她在抗击 ALS 过程中所展现出的勇气将会被永远铭记。

Steven Kirshblum, Denise I. Campagnolo

谨以此书献给我的母亲 Beverly 及父亲 Judah, 你们的教导使我明白了爱心和责任的重要。献给我在医疗领域和其他领域的导师们, 你们赐予我智慧、勇气和领导力。献给我在 Kessler 康复研究所和 UMDNJ/新泽西医学院的同事们, 你们一直是支持我的源动力。献给过去众多祝福我的住院医师和脊髓损伤同道们, 你们对我的挑战使我不断进步。献给我过去、现在和将来的患者, 你们使我的工作充满意义。最重要的, 我要献给我的妻子 Anna, 孩子们 Aryeh、Rena 和 Max, 是你们使我的生活充满意义。

Steven Kirshblum

谨以此书献给我的丈夫 Tom, 你是我力量的源泉。献给我的孩子们 Thomas 和 Emily, 你们是我生活中的阳光。献给我的父母 Rosalie 和 Carmine, 你们对我的信任始终如一。

Denise I. Campagnolo

谨以此书献给我的妻子 Lisa, 感谢她对我的宽容。献给我的孩子们 Allison 和 Jonathan, 你们已经长大了。献给我所指导的住院医师, 你们使我每天都可以继续学习。献给我治疗过的患者, 你们使所有的工作变得意义非凡。

Peter Gorman

我想要感谢 Cara、Declan 和 Maren, 你们的爱和支持使全部的计划得以成功。

Robert F. Heary

谨以此书献给我的妻子 Lin 和我的孩子们 Carter、Bryson 和 Darby, 你们给我的生活带来阳光, 并且在我需要平衡丈夫、父亲和科学家的角色时, 无私地分配时间。献给我的父母 Mildred 和 Herbert Nash, 虽然你们并不是总是清楚我前行的道路, 但是你们总是相信我能够找到正确的方向。感激 Fredrick F. Andres 博士对我的专业培训, 感谢我工作的迈阿密瘫痪治疗部的科研主管们 Ake Seiger、Richard P. Bunge 和 W. Dalton Dietrich 博士对我的坚定支持。还要感谢 Barth A. Green 医学博士, 你开启了我的科研生涯。

Mark S. Nash

胡志伟 刘楠 译

周谋望 陈仲强 审校

## 英文版前言

自从本书的第一版出版以来,脊髓损伤医学领域在过去 10 年以前所未有的速度得以发展。作为主编和编者,我们非常高兴第一版被广泛接受及使用。随着近些年来影像学和手术技术的进步以及治疗慢性疾病(如多发性硬化)新型药物的研发,本书第二版的出版需求变得十分迫切。

作为脊髓医学的第二版,本书与第一版的目的一样,是为实习医师、临床医师和临床研究者提供脊髓医学的综合资源。累及脊髓的创伤性和非创伤性疾患将在相关章节中予以详述。本书所涉及的内容符合脊髓损伤医学亚专科委员会认证的考试大纲。

与第一版一样,本书第 1 章为脊髓损伤医学亚专科概述,第 2 章是脊髓神经解剖和神经生理学。与第一版相比,重大的改变是将脊柱损伤的解剖、机制和影像学章节分为第 3 章和第 4 章两个章节。第 3 章讲述了脊柱的解剖和机制,配有详细的绘图和尸体标本图片,清晰地描述了脊柱的重要解剖结构以及创伤与疾病造成的脊柱不稳。第 4 章主要是综合影像学,配有 30 余张影像学图片(CT、MRI 或 X 线),为理解脊柱和脊髓复杂影像内容提供了宝贵的资源。

第 5 章为创伤性脊髓损伤的流行病学。参照 2011 年 6 月出版的最新修订的国际标准,第 6 章介绍了最新版的国际标准体格检查和美国脊髓损伤协会(ASIA)损伤分级。第 7 章详述了急性期医疗护理和手术相关问题。第 8 章叙述了脊髓损伤的预后。第 9 章至第 16 章按器官系统介绍了脊髓损伤后的急性期和慢性期并发症。

第 17 章为综合康复治疗,包括患者驾驶能力的评估。轮椅相关问题非常重要,将在第 18 章阐述。第 19 章介绍脊柱矫形器。第 20 章阐明极具挑战的脊髓损伤合并颅脑损伤的双重诊断。随后的章节讨论了帮助患者最大限度地