

# 福建農學院

FUJIAN AGRICULTURAL COLLEGE





福建农业学院建院50周年纪念  
 发扬革命传统，争取更大  
 光荣，为社会主义中国造就  
 更多更好的农业科学技术  
 管理干部

江一真  
 丁卯夏

中央顾问委员会委员、前院长江一真题词

前福建省省长胡平题词

喜见农园除虫害  
 浮禽早考一电报  
 预知人材代红云  
 造级八间树奇勋

胡平

1980.3.11

福建农院五十周年校庆

庆我农院五十寿诞 魁岫发流金山聚光  
几经变化愈磨愈亮 科教改革当仁不諠  
为我八闽人才培养 山海田企改革开放  
以智取胜 责任承当

張格心

一九八七·七·十八

我愛福安

祝賀福建農學院建校五十周年

張再旺

天津市人大常委会主任、  
前院党委书记张再旺题词

福建省顾问委员会副主任、前福建  
农林大学核心组组长张格心题词



福建農學院建校五十年紀念

培養德智體兼備  
的高級農業人才

吳中孚識

院長吳中孚題詞

梅峰園地起水龍  
新東濃露只甘間  
峰迴道轉豈無路  
金山鐘聲破春寒

楊浩林

八七年  
七月

前院黨委書記、院長楊浩林題詞

建校五十年  
桃李盡芬芳  
育材為四化  
振興我中華

李來榮

1987  
6  
30

名譽院長李來榮題詞



国家主席李先念在全国第五次妇代会上同我院代表廖彩玲亲切握手。



中共中央顾问委员会委员、  
前院长江一真在福州新校址基  
建工地视察。





项南在任中共福建省委书记期间多次来院视察。图为在前党委书记常建业陪同下与学生交谈。

前福建省省长胡平在我院南平牧草基地视察。



中共福建省委书记陈光毅来院视察时与周可涌教授、卢浩然教授亲切交谈。



福建省顾问委员会副主任、  
前福建农林大学核心组组长张  
格心和前副院长黄裔禹来院视  
察时合影。

前院党委书记、院长杨浩  
林数十年来从事高等农业教育  
管理与研究工作，为学校建设  
作出了重大贡献。



福建省教委副主任、前副  
院长傅宗弼来院给毕业生作报  
告。





# 沿革与概况

福建农学院的前身是福建协和大学农学院和福建省立农学院。

福建协和大学系美国在华基督教会办的13所私立大学之一。1936年秋创办农学和农业经济学两个农科学系。1940年秋增设园艺学系并成立农科。1942年春成立农学院。先后设农艺、园艺、农业经济、农业教育4个学系。校址初在福州魁岐,1938年春内迁邵武县,1946年秋回迁原址。

福建省立农学院创立于1940年夏。先后设农艺、园艺、森林、农业经济、农化土壤、畜牧兽医、植物病虫害7个学系。校址初在当年省会永安县的黄历村,1946年春迁福州战坂,次年又迁城内中山路。

1951年协和大学与华南女子文理学院合并为福州大学,协大农学院更名为福大农学院;省立农学院并入厦门大学,改称厦大农学院。

1952年8月两院合并组建福建农学院。初期设农学、园艺、森林3个系。在校学生近400人,教职工不足200人。在协大原址办学。

1958年学院迁至福州梅峰新建;设立漳州分院;林学系分出组建福建林学院;增设了畜牧兽医、农业机械、土壤农化、植物保护4个系。至1962年又先后建立了农业物理系和全国第一个养蜂专业;开始招收研究生和函授生。

迨至1965年,学院已有6个系10个专业;在校学生1300多人,教职工近800人;仪器设备总值150多万元,藏书17万册;校园占地1500多亩,校舍建筑面积6万多平方米;教学科研设施与基地建设也有一定规模。

在十年内乱中,学院于1969年被迫停办。1972年与福建林学院合并复办,称福建农林大学,校部设于南平西芹。1975年农林两院分开,农学院在三明荆东和沙县洋坊办学。

1978年起,随着国民经济建设的发展,学院恢复了原有各系科专业,相继建立了养蜂系、农业经济系和食品工程系,恢复招收本科生、硕士研究生和函授生,开始招收博士研究生。1980年起在福州金山重建,至1986年夏,全院各系全部集中于新址上课。

学院现设有9个系16个专业和16个研究所(室)。培养本科生为主,并招收硕士研究生和博士研究生,举办函授、师资培训、干部专修科、高等教育自学考试等多种类型的成人教育。每年承担近百个课题的科学研究任务。在校研究生和本科生、专科生2700多人,连同各类成人教育在内的在校生共有3000多人。教职工1800多人,教授、副教授120多人。藏书60多万册,仪器设备总值600多万元。校园占地近2000亩(约130公顷),校舍建筑面积13万多平方米。教学科研设施和基地建设也已初具规模。创始至今学院共培养毕业生近13,000人。

经过半个世纪的艰苦创业,学院已逐渐发展成为一所专业门类比较齐全,农学、工程、管理学科相互渗透的综合性农业大学。她将以崭新的姿态,为祖国现代化建设,为促进人类进步事业和科学技术的发展作出更大的贡献。



# A BRIEF DEVELOPMENTAL HISTORY OF THE COLLEGE

Fujian Agricultural College (FAC) derived from the former Agricultural College of Fukien Christian University (FCU) and the Fukien Provincial Agricultural College.

FCU was one of the thirteen christian universities established by the foreign missionaries in China. For the need at that time, Agronomy and Agricultural Economics departments were offered in 1936 to admit registrations. Then another Horticultural Department was founded in the autumn of 1940 to fulfill the requirement of an agricultural college. With further addition of an Agricultural Education Department, the college consisted of four departments. However, it was until the spring of 1942 that Agricultural College of FCU was formally inaugurated. The college and university were situated at Kuiqi, a small village on the eastern side of Fuzhou Min River. During the second world war, all colleges of the university were compelled to move to the inland town of Shaowu. But after the war the college returned to Fuzhou again in 1946.

The Provincial Agricultural College was founded in the summer of 1940. Seven departments such as Agronomy, Horticulture, Forestry, Agricultural Economics, Soil Chemistry, Animal Husbandry and Veterinary Science, and Plant Pathology were established one by one. At first, the college was built in the Huangli town of Yong'an County. Soon after the spring of 1946, the college transferred to the Zhangban town of Fuzhou and then to the Zhongshan Road of Fuzhou.

After liberation, FCU and Hwanan Girls' College united to form Fuzhou University in 1951. FCU Agricultural College was under the administration of Fuzhou University. While the Provincial Agricultural College became a college of the Amoy University known as Agricultural College of Amoy University.

By August, 1952, the two newly organized agricultural colleges of the province united to form Fujian Agricultural College. Only three departments, including Agronomy, Horticulture, and Forestry were then established in the old campus of FCU. The college had a faculty of not over 200 persons and about 400 students at that time.

In 1958 the college moved to the new campus of Meifeng, on the western suburb of Fuzhou City. The Department of Forestry formed a new forestry college, and a branch of subtropical college was also established in Zhangzhou. Four new departments such as Animal Husbandry and Veterinary Science, Agricultural Engineering, Soil Chemistry and Plant Protection were established. By 1962 specializations such as Agrophysics and Apiculture (the first ever found in our country) were created. Graduate students and students of corresponding school were also admitted to the college.

Up to 1965, FAC had 6 departments, 10 specializations. The college had a faculty of 800 persons, over one thousand three hundred students. The technical equipments had a total value of over ¥1500000. The college library had 170000 volumes on shelf. The college campus was as large as over 1500mu. The buildings reached an area about 70000 sq m. Together with the equipments of research and teaching, the college became a modern institute of higher learning.

The ten years of Cultural Revolution compelled the college to disorganize. By 1972 the college reorganized with the forestry college to become Fujian University of Agriculture and Forestry in Xiqin of Nanping city. In 1975, the two colleges divided and FAC established her campus in Jingdong, Sanming and Yangfang, Shaxian.

Beginning from 1978, with the good development of national economical construction, FAC aside from the recovery of old specializations and departments, new departments such as Apiculture and Food Engineering were established. Students of various specialization, post graduate students and corresponding students were admitted. A new modern college campus was constructed in Jinshan, Fuzhou city suburb in 1980. The construction ended in 1986. All students from the separated college sites reunited in Fuzhou. A few post graduate students working for doctorate degrees were also admitted to the college.

The college has 9 departments of 16 specializations and 16 research laboratories. The students are trained to become good experts in all branches of agricultural science. A small portion of them are candidates of master and doctorate degrees. Corresponding schools, short courses in special subjects for cadres and teachers, self taught schools and other educational training for grown up people are offered. The college is responsible for about a hundred research problems in agricultural science annually. The number of all these students resided in the campus is over three thousand every year. Among them more than 2500 are post graduates, college students, and short course training students. The college has a faculty of 1800 persons. Among them over 120 are professors and associate professors. The library on shelf maintains books over 600000 volumes. The laboratory equipments give a total value of over ¥6000000. The campus is about 2000 mu (ca. 130 hectares). The total college building area is 130000 sq m. Teaching and research facilities, experimental stations are well laid. The number of students graduated from FAC was about 13000.

For over half a century of struggle, the college gradually becomes a comprehensive agricultural university of agronomy, agrotechnics, and agricultural managements. Such will fairly suit the need of modern agriculture in the construction of a modern China. We expect the college will contribute much for the development of science technology and the promotion of human welfare.





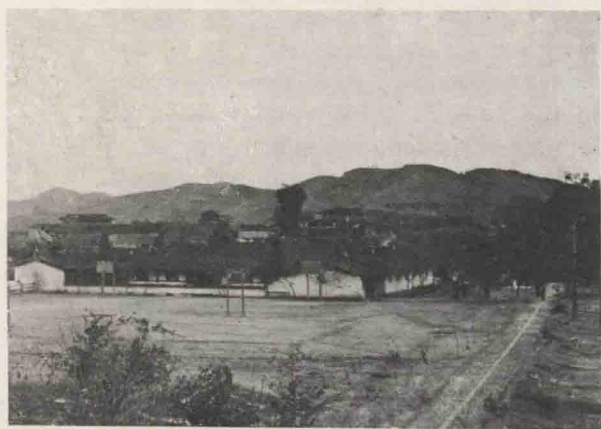
梅峰校园全景



协大农学院校舍一瞥

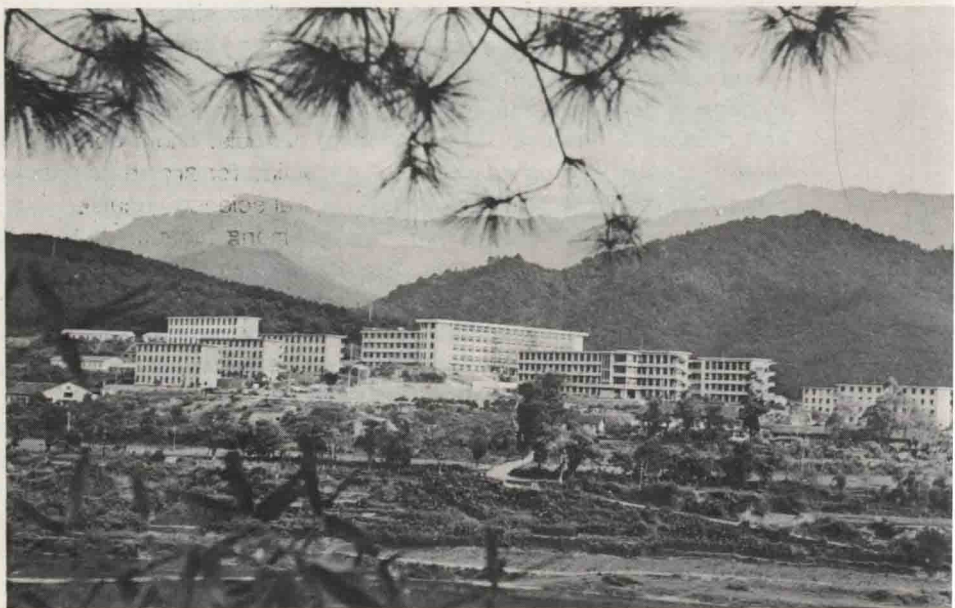


省立农学院首届毕业照



省立农学院校舍

三明时期部分校舍



## 学院历任负责人

### 福建协和大学农学院 (1936—1951)

1940年秋—1942年3月 陈兴乐 (农科主任)

1942年3月—1948年4月 陈兴乐

1948年4月—1951年4月 李来荣

### 福州大学农学院 (1951—1952)

1951年4月—1952年8月 李来荣

※ ※ ※

### 福建省立农学院 (1940—1951)

1940年6月—1944年6月 严家显

1944年6月—1948年8月 周 楨

1948年8月—1949年2月 符致逵

1949年2月—1951年6月 林礼铨

### 厦门大学农学院 (1951—1952)

1951年6月—1952年8月 黄 农

※ ※ ※

### 福建农学院 (1952—1969)

1952年8月—1955年2月 江一真 (合并委员会主任)

1955年2月—1956年10月 江一真

1956年10月—1956年12月 郭述尧

1956年12月—1969年11月 李来荣

※ ※ ※

### 福建农林大学 (1972—1975)

1974年8月—1975年5月 张格心 (核心组组长)

※ ※ ※

### 福建农学院 (1975— )

1975年5月—1978年2月 杨浩林 (核心组组长)

1978年2月—1983年12月 杨浩林

1979年12月— 李来荣 (名誉院长)

1983年12月— 吴中孚

注：未加注明的均为院长职务。

## A List of Deans or Responsible Personals for the Development of FAC

### Agricultural College of Fujian Christian University (1936—1951)

Autumn of 1940 to Mar. 1942 Chen X. L.

Mar. 1942 to Mar. 1947 Chen X. L.

Mar. 1947 to April 1951 Li L. R.

### Agricultural College of Fuzhou University (1951—1952)

April 1951 to Aug. 1952 Li L. R.

\* \* \* \* \*

### Fujian Provincial Agricultural College (1940—1951)

June 1940 to June 1944 Yan J. X.

June 1944 to Aug. 1948 Zhou Z.

Aug. 1948 to Feb. 1949 Fu Z. K.

Feb. 1949 to June 1951 Ling L. Q.

\* \* \* \* \*

### Agricultural College of Amoy University (1951—1952)

June 1951 to Aug. 1952 Huang N.

### Fujian Agricultural College (1952—1969)

Aug. 1952 to Feb. 1955 Jiang Y. Z.

(Chairman of Union Com.)

Feb. 1955 to Oct. 1956 Jiang Y. Z.

Oct. 1956 to Dec. 1956 Guo S. Y.

Dec. 1956 to 1969 Li L. R.

\* \* \* \* \*

### Fujian Agriculture and Forestry University (1972—1975)

Aug. 1974 to May 1975 Zhang G. X.

(Chairman of Central Com.)

\* \* \* \* \*

### Fujian Agricultural College (1975— )

May 1975 to Feb. 1978 Yang H. L.

Dec. 1979 to now Li L. R. (Honorary Dean)

Dec. 1983 to now Wu Z. F.



# 校园风貌

学院地处福州南台岛北端。东临闽江，西濒乌龙江，南峙妙峰山，北固硤山与古淮安相邻。古迹金山寺位于校园西南角。

校园内树木繁茂，鸟语花香，阡陌纵横，楼宇叠翠，山水环抱，静谧宜人。游人皆赞其不愧为学府胜地。

校园占地近2000亩(约130公顷)，按功能建有教学区、学生宿舍区、教工住宅区、教授住宅区、培训区及科研厂场区等校舍建筑群共13万多平方米。并建有400米跑道的田径场和1700多个坐位的礼堂及植物园等。

FAC is situated at the northern end of Nantai island, Fuzhou. Min River flows on the east. Wulong River glides along smoothly on the west. Mt. Miaofeng lies on the south. Mt. Ai and old Huaian Town stays side by side on the north. The well known old Jinshan temple stands on the south eastern corner of the campus.

The lovely tranquil campus is surrounded with flowing rivers and endless mountains. The land is flourished with trees and flowers with birds singing and flying in them. At the bottom of the mountains scattered with fish pools, farm lands and buildings. It is a place of delightful resort for any visitor that ever comes.

The campus has an area about 2000 mu ( ca. 130 ha. ). With various topographical built up, teaching blocks, dormitory blocks, faculty residential block, research and experimental stations, factories blocks, professor residential blocks, training school block scatter among the campus. The total utilizable building area is above 130000 sq m. A football ground is surrounded by 400 meters tracks. The assembly hall is big enough for 1700 audiences. A hilly elegant botanical garden is also constructed.

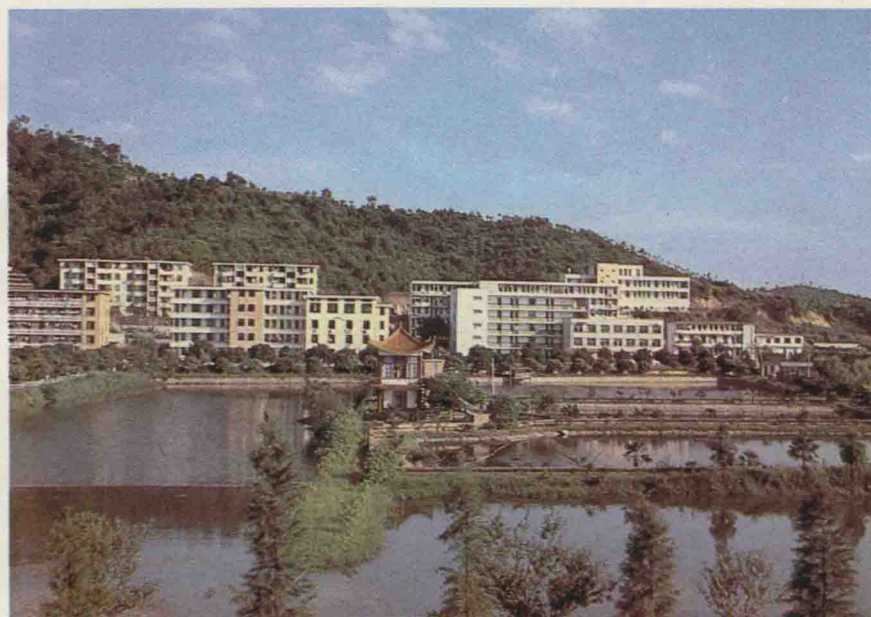
教学区建筑群



学生宿舍夜景



培训区春色



校园一角



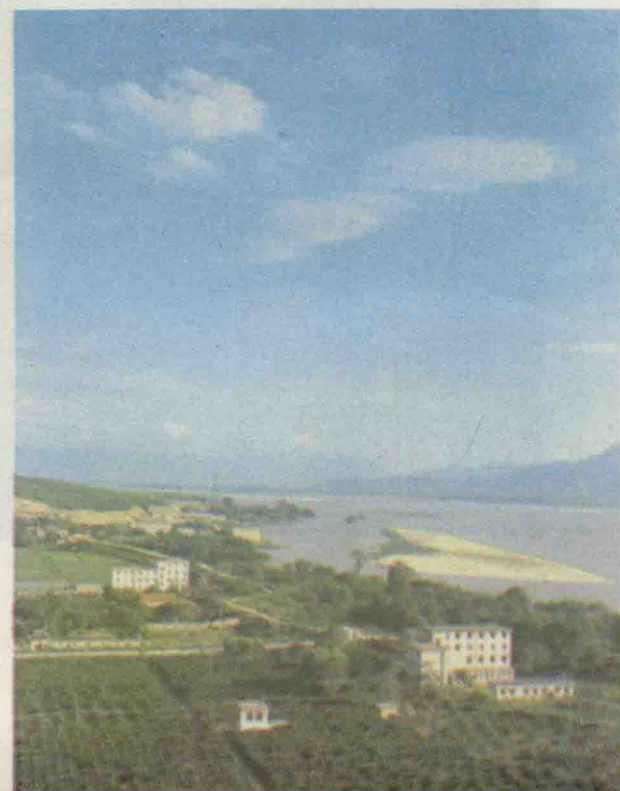




礼堂



校大门



乌龙江畔科研区

专家招待所



叶尚菁副院长、杨浩林同志与  
基建人员讨论校园建设远期规划。



图书馆



阶梯教室外景



攀登亭远眺





# 校园平面示意图

